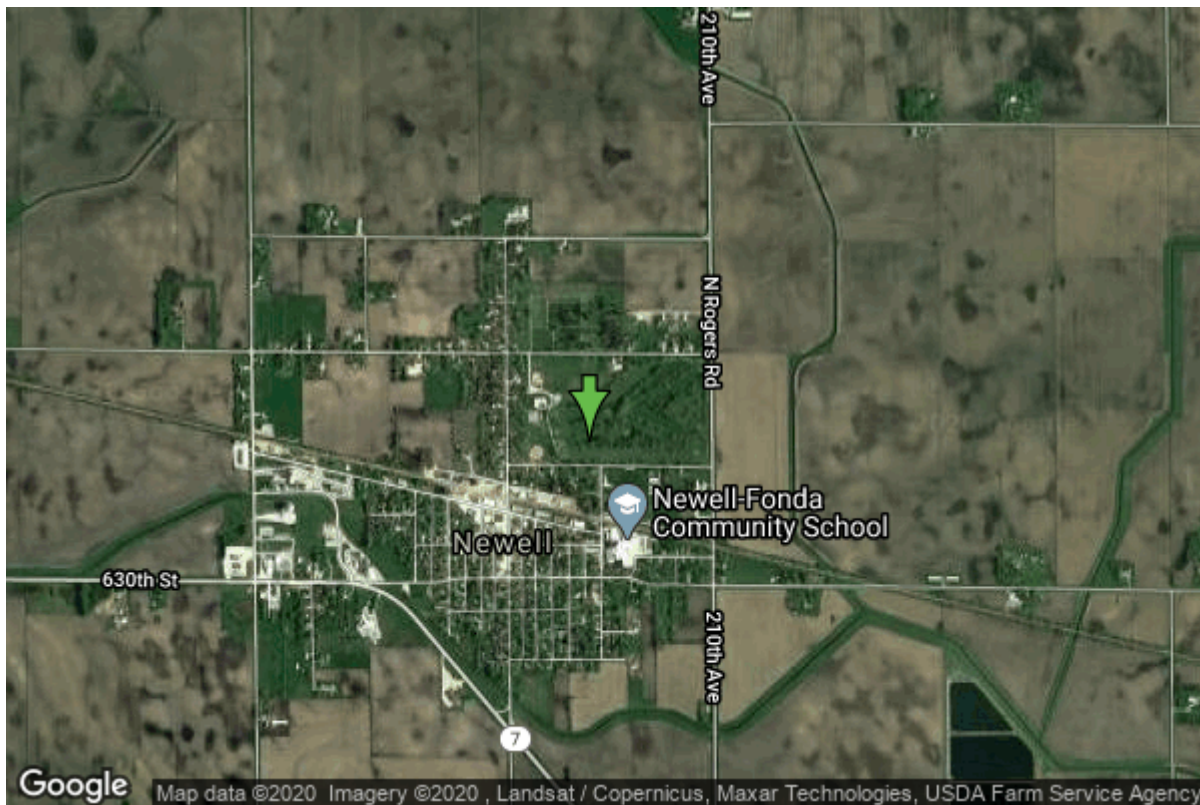


# Well W#57089 Information



<b>Date Received</b>	09/30/2009	<b>State</b>	Iowa
<b>Owner Name</b>	Newell, City Of	<b>County</b>	Buena Vista
<b>Alt Name</b>	#6	<b>Quadrangle</b>	Newell East, Iowa
<b>WNumber</b>	57089	<b>Township</b>	T90N
<b>PWTS ID</b>	0	<b>Range</b>	R35W
<b>PWS ID</b>	1155049	<b>Section</b>	17
<b>Storet ID</b>	0	<b>Quarter</b>	SE NE SW
<b>SDWIS ID</b>	2586243	<b>Latitude</b>	42.6087210000
<b>USGS ID</b>	0	<b>Longitude</b>	-94.9982950000
<b>Project</b>	Source Water Protection	<b>Accuracy</b>	
<b>Operator</b>	Unknown	<b>UTM X</b>	336090
		<b>UTM Y</b>	4719301

<b>Site Type</b>	Drilled hole	<b>Drilling Company</b>	Bresnahan Well Co.
<b>Well Status</b>	Active	<b>Drilling Date</b>	06/02/2007
<b>Field Located</b>	No	<b>Drilling Method</b>	Rotary
<b>Elevation</b>	1259 ft	<b>Bedrock Depth</b>	305 ft
<b>Elevation Accuracy</b>	Digital Elevation Model Accurate to 5 ft	<b>Well Depth</b>	281 ft
<b>Landscape Position</b>	Level Surface	<b>Total Depth</b>	307 ft
		<b>Well Types</b>	Municipal, Public Supply
		<b>Aquifers</b>	Pleistocene

## Hole Construction Information

<b>Date</b>	06/02/2007	<b>Depth</b>	307.00 ft
<b>Diameter</b>	18.00 in		

## Comments

# Casing Construction Information

Date	06/02/2007	Casing Type	Steel
Start Depth	6.00 ft	End Depth	252.00 ft
Diameter	8.00 in	Amount	246.00 ft
Comments			

# Screen Construction Information

Date	06/02/2007	Slot Size	0.03
Screen Type	Steel	End Depth	281.00 ft
Start Depth	251.00 ft	Amount	30 ft
Diameter	4.00 in		
Comments			

# Grout Construction Information

Date	06/02/2007	Grout Placement	Tremie
Grout Type	Bentonite (Clay)	End Depth	200.00 ft
Start Depth	10.00 ft		
Comments	1,800 pounds		

---

Date	06/02/2007	Grout Placement	Tremie
Grout Type	Cement	End Depth	250.00 ft
Start Depth	200.00 ft		
Comments	2,500 pounds		

# Gravel Pack Construction Information

Date	06/02/2007	Slot Size	
Gravel Pack Type	Gravel	End Depth	281.00 ft
Start Depth	231.00 ft		
Comments	gravel type union, 90 gallons		

# Log Information

Date	
Log Types	Drillers log
Prepared By	Unknown
Comments	

# Water Production Information

<b>Date</b>	07/13/2007	<b>Start Time</b>	10:40
<b>Aquifer</b>	Quaternary		
<b>Static Water Level</b>	110.00 ft	<b>Yield</b>	247 gallons per minute
<b>Pumping Water Level</b>	163 ft	<b>Yield Method</b>	Orifice
<b>Measurement</b>	Unknown	<b>Pump Test</b>	Yes
<b>Pump Method</b>	Unknown	<b>Duration</b>	380 mins
<b>Comments</b>	no methods given		

---

<b>Date</b>	06/18/2007	<b>Start Time</b>	10:35
<b>Aquifer</b>	Quaternary		
<b>Static Water Level</b>	102.00 ft	<b>Yield</b>	230 gallons per minute
<b>Pumping Water Level</b>	141 ft	<b>Yield Method</b>	Orifice
<b>Measurement</b>	Unknown	<b>Pump Test</b>	Yes
<b>Pump Method</b>	Unknown	<b>Duration</b>	240 mins
<b>Comments</b>	no methods given		

<https://www.iuhr.uiowa.edu/igs/geosam/well/57089/general-information>