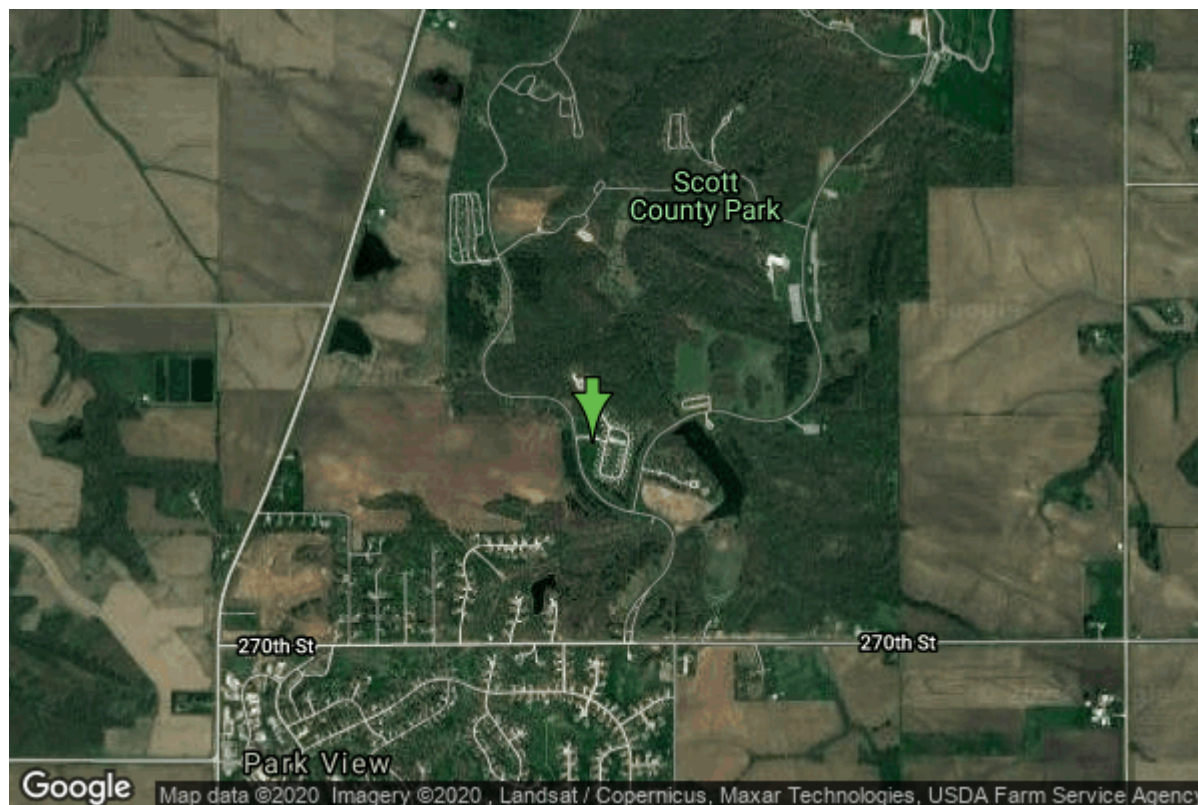


# Well W#57637 Information



<b>Date Received</b>	08/08/2003	<b>State</b>	Iowa
<b>Owner Name</b>	Scott County	<b>County</b>	Scott
<b>Alt Name</b>	BALD EAGLE CAMPGROUND	<b>Quadrangle</b>	Eldridge, Iowa
<b>WNumber</b>	57637	<b>Township</b>	T80N
<b>PWTS ID</b>	0	<b>Range</b>	R4E
<b>PWS ID</b>	8251401	<b>Section</b>	30
<b>Storet ID</b>	0	<b>Quarter</b>	SE NE NW
<b>SDWIS ID</b>	2583369	<b>Latitude</b>	41.7051000000
<b>USGS ID</b>	0	<b>Longitude</b>	-90.5322600000
<b>Project</b>	Source Water Protection	<b>Accuracy</b>	
<b>Operator</b>	Unknown	<b>UTM X</b>	705321
		<b>UTM Y</b>	4619977

<b>Site Type</b>	Drilled hole	<b>Drilling Company</b>	Gingerich Well Co.
<b>Well Status</b>	Active	<b>Drilling Date</b>	07/22/2003
<b>Field Located</b>	No	<b>Drilling Method</b>	Rotary
<b>Elevation</b>	741 ft	<b>Bedrock Depth</b>	77 ft
<b>Elevation Accuracy</b>	Digital Elevation Model Accurate to 5 ft	<b>Well Depth</b>	320 ft
<b>Landscape Position</b>	Hillside	<b>Total Depth</b>	320 ft
		<b>Well Types</b>	Public Supply
		<b>Aquifers</b>	Silurian

## Hole Construction Information

<b>Date</b>	07/22/2003	<b>Depth</b>	82.00 ft
<b>Diameter</b>	18.00 in		

## Comments

---

Date	07/22/2003		
Diameter	13.00 in	Depth	162.00 ft
Comments			

---

Date	07/22/2003		
Diameter	8.00 in	Depth	320.00 ft
Comments			

## Casing Construction Information

Date	07/22/2003	Casing Type	Steel
Start Depth	-1.00 ft	End Depth	82.00 ft
Diameter	14.00 in	Amount	83.00 ft
Comments			

---

Date	07/22/2003	Casing Type	Steel
Start Depth	-1.00 ft	End Depth	162.00 ft
Diameter	8.00 in	Amount	163.00 ft
Comments			

---

Date	07/22/2003	Casing Type	PVC
Start Depth	160.00 ft	End Depth	320.00 ft
Diameter	6.00 in	Amount	160.00 ft
Comments			

---

Date	07/22/2003	Casing Type	Perforated Steel
Start Depth	160.00 ft	End Depth	320.00 ft
Diameter	6.00 in	Amount	160.00 ft
Comments			

---

Date	07/22/2003	Casing Type	Perforated Steel
Start Depth	0.00 ft	End Depth	0.00 ft
Diameter	0.00 in	Amount	0.00 ft
Comments			

## Grout Construction Information

Date	07/22/2003		
Grout Type	Cement	Grout Placement	Unknown
Start Depth	0.00 ft	End Depth	82.00 ft
Comments			

---

Date	07/22/2003		
Grout Type	Cement	Grout Placement	Unknown

<b>Start Depth</b>	10.00 ft	<b>End Depth</b>	162.00 ft
<b>Comments</b>			

## Log Information

<b>Date</b>	
<b>Log Types</b>	Drillers log
<b>Prepared By</b>	Unknown
<b>Comments</b>	

---

<b>Date</b>	
<b>Log Types</b>	Strip log
<b>Prepared By</b>	Unknown
<b>Comments</b>	

## Stratigraphy Information

<b>System</b>	Unknown		
<b>Series</b>			
<b>Group</b>			
<b>Formation</b>			
<b>Member</b>			
<b>Submember</b>			
<b>Start Depth</b>	0.00 ft	<b>End Depth</b>	5.00 ft
<b>Contact Accuracy</b>			
<b>Penetration</b>			
<b>Primary Lithology</b>	Unknown	<b>Percent</b>	100
<b>Secondary Lithology</b>		<b>Percent</b>	
<b>Tertiary Lithology</b>		<b>Percent</b>	
<b>Comments</b>			

---

<b>System</b>	Quaternary		
<b>Series</b>	Pleistocene Series		
<b>Group</b>	Pre-Illinoian		
<b>Formation</b>			
<b>Member</b>			
<b>Submember</b>			
<b>Start Depth</b>	5.00 ft	<b>End Depth</b>	77.00 ft
<b>Contact Accuracy</b>			
<b>Penetration</b>			
<b>Primary Lithology</b>	Till - Unoxidized And Unleached	<b>Percent</b>	60
<b>Secondary Lithology</b>	Till - Oxidized And Unleached	<b>Percent</b>	25
<b>Tertiary Lithology</b>	Till - Oxidized And Leached	<b>Percent</b>	15
<b>Comments</b>			

---

<b>System</b>	Silurian		
<b>Series</b>			
<b>Group</b>			
<b>Formation</b>			
<b>Member</b>			
<b>Submember</b>			
<b>Start Depth</b>	77.00 ft	<b>End Depth</b>	320.00 ft
<b>Contact Accuracy</b>			
<b>Penetration</b>			
<b>Primary Lithology</b>	Dolomite	<b>Percent</b>	100
<b>Secondary Lithology</b>		<b>Percent</b>	
<b>Tertiary Lithology</b>		<b>Percent</b>	
<b>Comments</b>			

## Water Production Information

<b>Date</b>	07/22/2003	<b>Start Time</b>	14:00
<b>Aquifer</b>	Bedrock		
<b>Static Water Level</b>	40.00 ft	<b>Yield</b>	90 gallons per minute
<b>Pumping Water Level</b>	100 ft	<b>Yield Method</b>	Estimate
<b>Measurement</b>	Estimate	<b>Pump Test</b>	Yes
<b>Pump Method</b>	Airlifted	<b>Duration</b>	200 mins
<b>Comments</b>			

## Chip Storage Information

<b>Date</b>	08/14/2003		
<b>Storage</b>	OD4-1024>1025	<b>Bin</b>	
<b>Number of Boxes</b>	2	<b>Number of Samples</b>	64
<b>Sample Intervals</b>	5	<b>Sample Gaps</b>	0-5, 165-175
<b>Sample Top</b>	0 ft	<b>Sample Bottom</b>	320 ft
<b>Washed Top</b>	85 ft	<b>Washed Bottom</b>	320 ft
<b>Duplicate Storage</b>			
<b>Comments</b>			

<https://www.ihr.uiowa.edu/igs/geosam/well/57637/general-information>