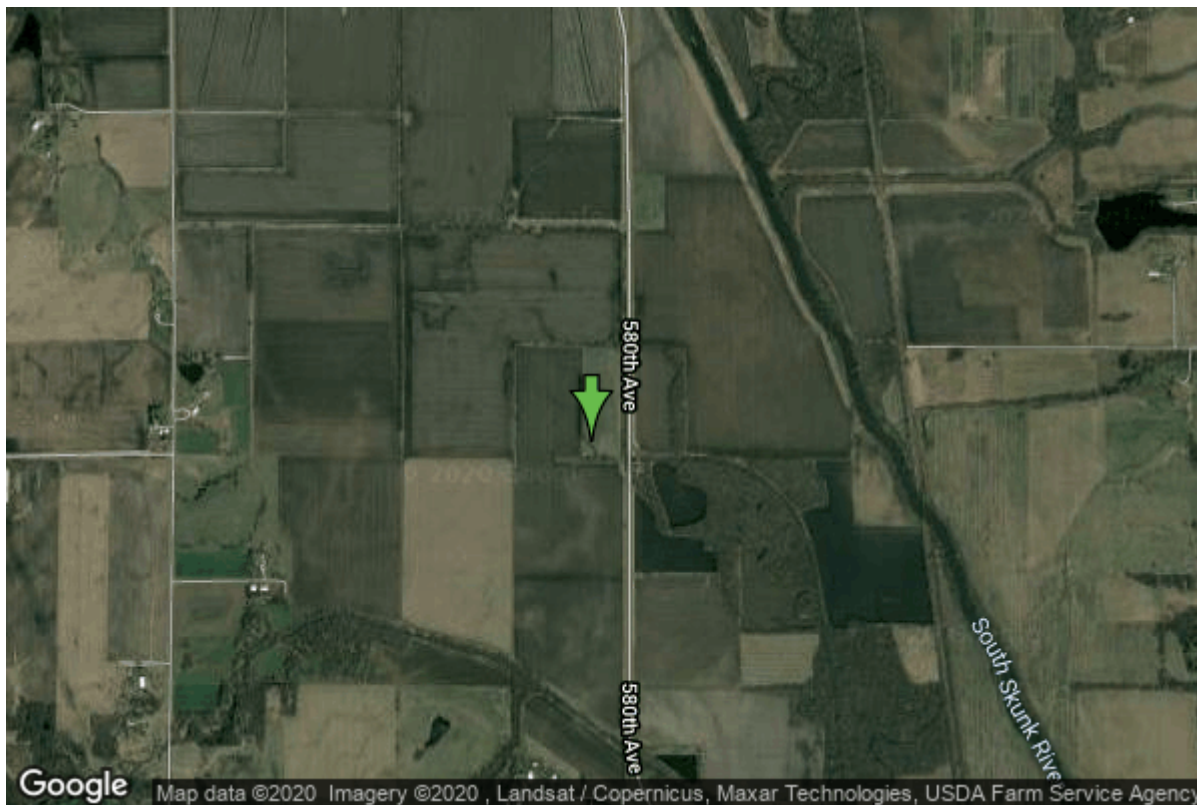


Well W#57860 Information



Date Received		State	Iowa
Owner Name	Huxley, City Of	County	Story
Alt Name	#5	Quadrangle	Huxley, Iowa
WNumber	57860	Township	T82N
PWTS ID	0	Range	R23W
PWS ID	8538066	Section	17
Storet ID	0	Quarter	NE NE SE
SDWIS ID	2583115	Latitude	41.9181900000
USGS ID	0	Longitude	-93.5418500000
Project	Source Water Protection	Accuracy	
Operator	Unknown	UTM X	455068
		UTM Y	4640835

Site Type	Drilled hole	Drilling Company	Northway Corporation
Well Status	Active	Drilling Date	08/26/2002
Field Located	No	Drilling Method	Other
Elevation	850 ft	Bedrock Depth	0 ft
Elevation Accuracy	Digital Elevation Model Accurate to 5 ft	Well Depth	98 ft
Landscape Position	Valley	Total Depth	98 ft
		Well Types	Municipal, Public Supply
		Aquifers	Alluvium

Hole Construction Information

Date	08/26/2002	Depth	85.00 ft
Diameter	48.00 in		

Comments

Casing Construction Information

Date	08/26/2002	Casing Type	Unknown
Start Depth	-1.50 ft	End Depth	53.00 ft
Diameter	16.00 in	Amount	54.50 ft
Comments			

Screen Construction Information

Date	08/26/2002	Slot Size	0.07
Screen Type	Steel	End Depth	83.00 ft
Start Depth	53.00 ft	Amount	30 ft
Diameter	16.00 in		
Comments			

Grout Construction Information

Date	08/26/2002	Grout Placement	Tremie
Grout Type	Neat Cement	End Depth	31.00 ft
Start Depth	11.00 ft		
Comments			

Gravel Pack Construction Information

Date	08/26/2002	Slot Size	
Gravel Pack Type	Northern Gravel	End Depth	84.00 ft
Start Depth	33.00 ft		
Comments			

Pump Construction Information

Date	08/26/2002	Pump Type	Submersible
Diameter	11.00 in	Rating	700
Depth Intake	50.00 ft		
Comments			

Log Information

Date	
Log Types	Drillers log
Prepared By	Unknown
Comments	

Water Production Information

Date	08/22/2002	Start Time	08:00
Aquifer	Unknown		
Static Water Level	15.00 ft	Yield	1050 gallons per minute
Pumping Water Level	24 ft	Yield Method	Orifice
Measurement	Tape	Pump Test	Yes
Pump Method	Pumped	Duration	16 mins
Comments			

<https://www.ihr.uiowa.edu/igs/geosam/well/57860/general-information>