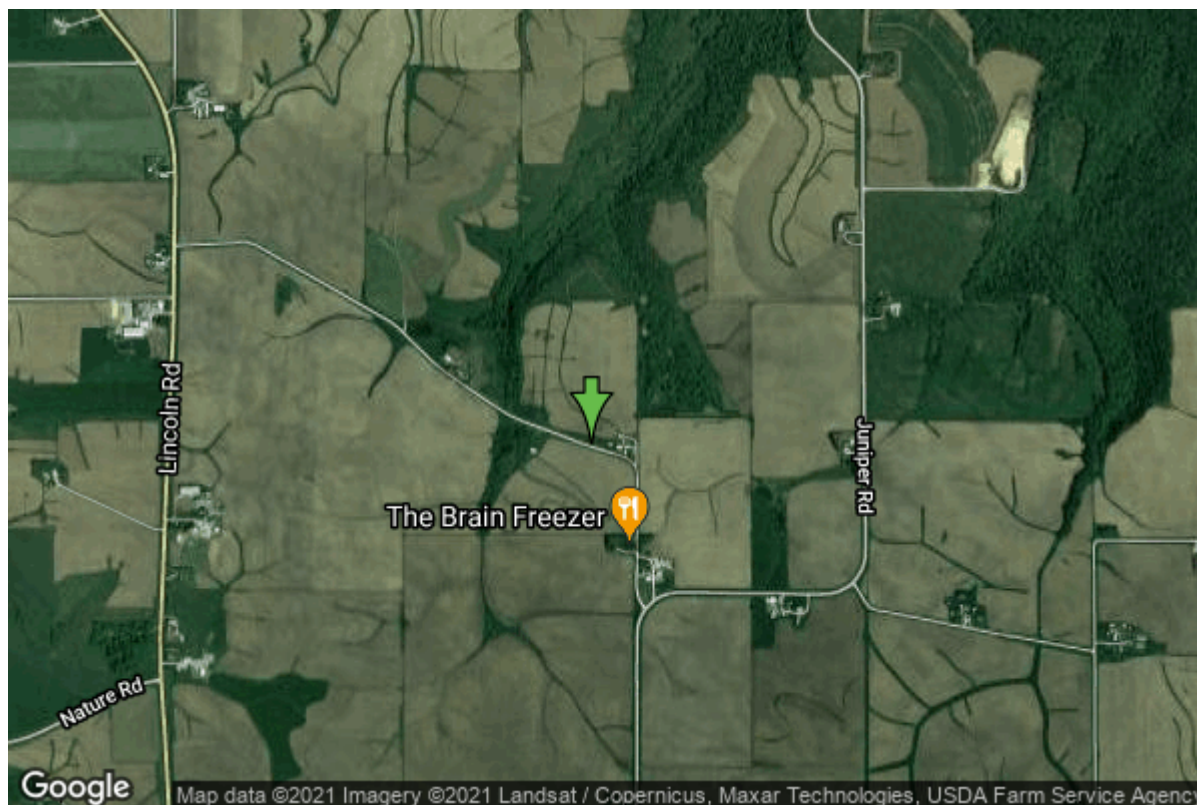


# Well W#58294 Information



<b>Date Received</b>	01/13/2004	<b>State</b>	Iowa
<b>Owner Name</b>	Chensvold, Burnell	<b>County</b>	Fayette
<b>Alt Name</b>		<b>Quadrangle</b>	Festina, Iowa
<b>WNumber</b>	58294	<b>Township</b>	T95N
<b>PWTS ID</b>	2095322	<b>Range</b>	R8W
<b>PWS ID</b>	0	<b>Section</b>	29
<b>Storet ID</b>	0	<b>Quarter</b>	SE SE NE
<b>SDWIS ID</b>	0	<b>Latitude</b>	43.0109280000
<b>USGS ID</b>	0	<b>Longitude</b>	-91.8053060000
<b>Project</b>	Unknown	<b>Accuracy</b>	
<b>Operator</b>	Unknown	<b>UTM X</b>	597361
		<b>UTM Y</b>	4762721

<b>Site Type</b>	Drilled hole	<b>Drilling Company</b>	Shawver Well Co.
<b>Well Status</b>	Primary	<b>Drilling Date</b>	10/15/2003
<b>Field Located</b>	No	<b>Drilling Method</b>	Rotary
<b>Elevation</b>	1214 ft	<b>Bedrock Depth</b>	43 ft
<b>Elevation Accuracy</b>	Digital Elevation Model Accurate to 5 ft	<b>Well Depth</b>	776 ft
<b>Landscape Position</b>	Unknown	<b>Total Depth</b>	776 ft
		<b>Well Types</b>	Private
		<b>Aquifers</b>	

## Hole Construction Information

<b>Date</b>	10/15/2003	<b>Depth</b>	48.00 ft
<b>Diameter</b>	12.25 in		

## Comments

---

Date	10/15/2003	Depth	441.00 ft
Diameter	8.75 in		
Comments			

---

Date	10/15/2003	Depth	776.00 ft
Diameter	5.00 in		
Comments			

## Casing Construction Information

---

Date	10/15/2003	Casing Type	Steel
Start Depth	-2.00 ft	End Depth	441.00 ft
Diameter	5.56 in	Amount	443.00 ft
Comments			

---

Date	10/15/2003	Casing Type	PVC
Start Depth	636.00 ft	End Depth	776.00 ft
Diameter	4.50 in	Amount	140.00 ft
Comments			

---

Date	10/15/2003	Casing Type	Perforated PVC
Start Depth	0.00 ft	End Depth	0.00 ft
Diameter	0.00 in	Amount	0.00 ft
Comments			

---

Date	10/15/2003	Casing Type	Perforated Steel
Start Depth	736.00 ft	End Depth	776.00 ft
Diameter	4.50 in	Amount	40.00 ft
Comments			

## Grout Construction Information

---

Date	10/15/2003	Grout Placement	Unknown
Grout Type	Cement	End Depth	441.00 ft
Start Depth	0.00 ft		
Comments			

## Log Information

---

Date	
Log Types	Drillers log
Prepared By	Unknown
Comments	

## Water Production Information

<b>Date</b>	10/15/2003	<b>Start Time</b>	
<b>Aquifer</b>	Bedrock		
<b>Static Water Level</b>	402.00 ft	<b>Yield</b>	15 gallons per minute
<b>Pumping Water Level</b>	480 ft	<b>Yield Method</b>	Unknown
<b>Measurement</b>	Unknown	<b>Pump Test</b>	Yes
<b>Pump Method</b>	Airlifted	<b>Duration</b>	30 mins
<b>Comments</b>			

## Chip Storage Information

<b>Date</b>			
<b>Storage</b>		<b>Bin</b>	B-11
<b>Number of Boxes</b>	0	<b>Number of Samples</b>	0
<b>Sample Intervals</b>	0	<b>Sample Gaps</b>	
<b>Sample Top</b>	0 ft	<b>Sample Bottom</b>	0 ft
<b>Washed Top</b>	0 ft	<b>Washed Bottom</b>	0 ft
<b>Duplicate Storage</b>			
<b>Comments</b>			

<https://www.iuhr.uiowa.edu/igs/geosam/well/58294/general-information>