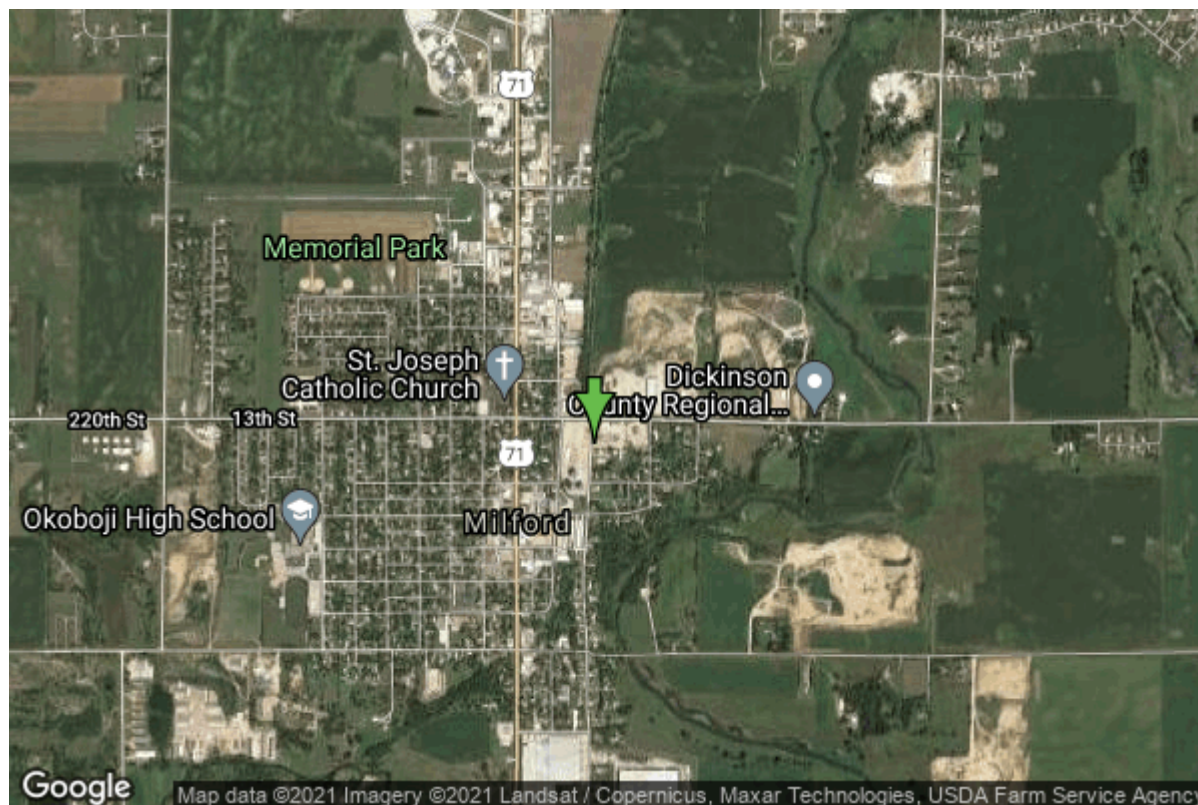


Well W#58678 Information



Date Received	04/20/2004	State	Iowa
Owner Name	Milford, City Of	County	Dickinson
Alt Name		Quadrangle	Milford, Iowa
WNumber	58678	Township	T98N
PWTS ID	0	Range	R36W
PWS ID	3050079	Section	7
Storet ID	0	Quarter	NW NW NE
SDWIS ID	2585050	Latitude	43.3270880000
USGS ID	0	Longitude	-95.1459460000
Project	Source Water Protection	Accuracy	
Operator	Unknown	UTM X	326016
		UTM Y	4799375

Site Type	Drilled hole	Drilling Company	Middendorff Well Co.
Well Status	Standby	Drilling Date	04/13/2004
Field Located	No	Drilling Method	Rotary
Elevation	1441 ft	Bedrock Depth	198 ft
Elevation Accuracy	Digital Elevation Model Accurate to 5 ft	Well Depth	505 ft
Landscape Position	Upland	Total Depth	592 ft
		Well Types	Municipal, Public Supply
		Aquifers	Dakota/Cretaceous

Log Information

Date	
Log Types	Drillers log

Prepared By Unknown
Comments

Date
Log Types Strip log
Prepared By Unknown
Comments

Stratigraphy Information

System Quaternary
Series Pleistocene Series
Group Wisconsinan Episode
Formation Noah Creek
Member
Submember
Start Depth 0.00 ft **End Depth** 40.00 ft
Contact Accuracy
Penetration
Primary Lithology Sand And Gravel **Percent** 100
Secondary Lithology Unknown **Percent** 0
Tertiary Lithology Unknown **Percent** 0
Comments

System Quaternary
Series Pleistocene Series
Group Wisconsinan Episode
Formation Sheldon Creek
Member
Submember
Start Depth 40.00 ft **End Depth** 195.00 ft
Contact Accuracy
Penetration
Primary Lithology Till - Unoxidized And **Percent** 100
Unleached
Secondary Lithology **Percent**
Tertiary Lithology **Percent**
Comments No sample between 90' and 100'.

System Cretaceous
Series
Group Fort Benton ("Lower Colorado ")
Formation Dakota
Member Woodbury
Submember
Start Depth 195.00 ft **End Depth** 410.00 ft
Contact Accuracy
Penetration

Primary Lithology	Sandstone	Percent	0
Secondary Lithology	Shale	Percent	0
Tertiary Lithology	Sand	Percent	0
Comments	No sample between 280'-285'; questionable base.		

System	Cretaceous		
Series			
Group	Fort Benton ("Lower Colorado ")		
Formation	Dakota		
Member	Nishnabotna		
Submember			
Start Depth	410.00 ft	End Depth	592.00 ft
Contact Accuracy			
Penetration			
Primary Lithology	Sandstone	Percent	0
Secondary Lithology	Shale	Percent	0
Tertiary Lithology	Unknown	Percent	0
Comments			

Water Production Information

Date	04/23/2015	Start Time	
Aquifer			
Static Water Level	239.00 ft	Yield	350 gallons per minute
Pumping Water Level	317 ft	Yield Method	Unknown
Measurement	Unknown	Pump Test	No
Pump Method	Unknown	Duration	360 mins
Comments	Reported on 2015 DNR Dakota survey.		

Chip Storage Information

Date	04/30/2004		
Storage	OD4-1128>1129	Bin	
Number of Boxes	2	Number of Samples	89
Sample Intervals	5	Sample Gaps	90-100; 280-285
Sample Top	0 ft	Sample Bottom	592 ft
Washed Top	195 ft	Washed Bottom	592 ft
Duplicate Storage			
Comments			

<https://www.iuhr.uiowa.edu/igs/geosam/well/58678/general-information>