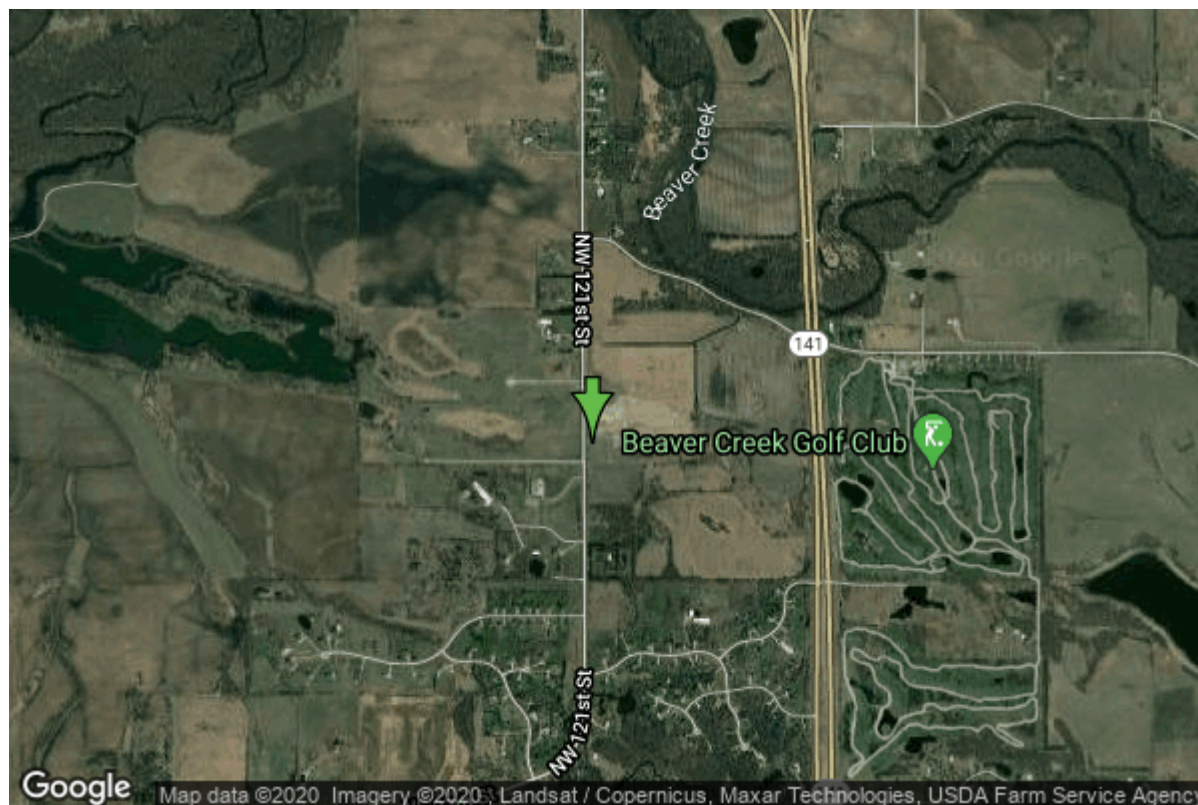


Well W#60078 Information



Date Received		State	Iowa
Owner Name	Grimes, City Of	County	Polk
Alt Name		Quadrangle	Grimes, Iowa
WNumber	60078	Township	T80N
PWTS ID	0	Range	R25W
PWS ID	7736011	Section	20
Storet ID	0	Quarter	SE NW SW
SDWIS ID	2582777	Latitude	41.7218900000
USGS ID	0	Longitude	-93.7839400000
Project	Source Water Protection	Accuracy	
Operator	Unknown	UTM X	434794
		UTM Y	4619196

Site Type	Drilled hole	Drilling Company	Layne Western - Ia.
Well Status	Active	Drilling Date	05/25/2000
Field Located	No	Drilling Method	Other
Elevation	849 ft	Bedrock Depth	82 ft
Elevation Accuracy	Digital Elevation Model Accurate to 5 ft	Well Depth	82 ft
Landscape Position	Valley	Total Depth	82 ft
		Well Types	Municipal, Public Supply
		Aquifers	Alluvium

Hole Construction Information

Date	05/25/2000	Depth	84.00 ft
Diameter	48.00 in		

Comments

Casing Construction Information

Date	05/25/2000	Casing Type	Steel
Start Depth	-2.00 ft	End Depth	62.00 ft
Diameter	24.00 in	Amount	64.00 ft
Comments			

Screen Construction Information

Date	05/25/2000	Slot Size	0.07
Screen Type	Steel	End Depth	82.00 ft
Start Depth	62.00 ft	Amount	20 ft
Diameter	24.00 in		
Comments			

Grout Construction Information

Date	05/25/2000	Grout Placement	Unknown
Grout Type	Cement	End Depth	20.00 ft
Start Depth	5.00 ft		
Comments			

Date	05/25/2000	Grout Placement	Unknown
Grout Type	Bentonite (Clay)	End Depth	25.00 ft
Start Depth	20.00 ft		
Comments			

Gravel Pack Construction Information

Date	05/25/2000	Slot Size	
Gravel Pack Type	Unknown	End Depth	82.00 ft
Start Depth	25.00 ft		
Comments			

Pump Construction Information

Date	05/25/2000	Pump Type	Submersible
Diameter	8.00 in	Rating	600
Depth Intake	60.00 ft		
Comments			

Log Information

Date	
Log Types	Drillers log
Prepared By	Unknown
Comments	

Water Production Information

Date	05/23/2000	Start Time	
Aquifer	Alluvium	Yield	600 gallons per minute
Static Water Level	13.00 ft	Yield Method	Orifice
Pumping Water Level	25 ft	Pump Test	Yes
Measurement	Tape	Duration	800 mins
Pump Method	Bailed		
Comments			

<https://www.ihr.uiowa.edu/igs/geosam/well/60078/general-information>