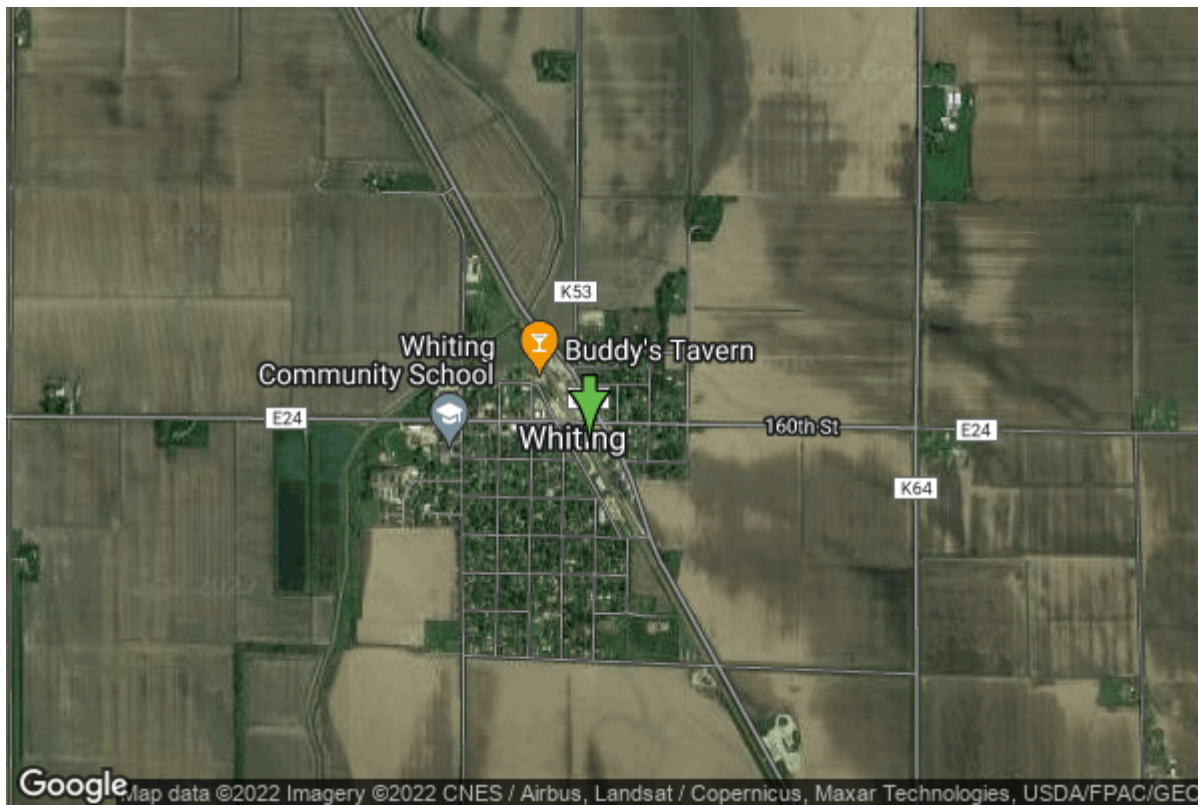


# Well W#60330 Information



<b>Date Received</b>	06/27/2005	<b>State</b>	Iowa
<b>Owner Name</b>	Whiting, City Of	<b>County</b>	Monona
<b>Alt Name</b>	ATTN: TERRY WEST	<b>Quadrangle</b>	Sloan, Iowa
<b>WNumber</b>	60330	<b>Township</b>	T84N
<b>PWTS ID</b>	0	<b>Range</b>	R46W
<b>PWS ID</b>	6769018	<b>Section</b>	1
<b>Storet ID</b>	0	<b>Quarter</b>	NW NE NW
<b>SDWIS ID</b>	2584993	<b>Latitude</b>	42.1268170000
<b>USGS ID</b>	0	<b>Longitude</b>	-96.1494440000
<b>Project</b>	Source Water Protection	<b>Accuracy</b>	
<b>Operator</b>	Unknown	<b>UTM X</b>	239676
		<b>UTM Y</b>	4668659

<b>Site Type</b>	Drilled hole	<b>Drilling Company</b>	Layne Western - Ne.
<b>Well Status</b>	Active	<b>Drilling Date</b>	08/04/2004
<b>Field Located</b>	No	<b>Drilling Method</b>	Other
<b>Elevation</b>	1060 ft	<b>Bedrock Depth</b>	0 ft
<b>Elevation Accuracy</b>	Digital Elevation Model Accurate to 5 ft	<b>Well Depth</b>	97 ft
<b>Landscape Position</b>	Unknown	<b>Total Depth</b>	97 ft
		<b>Well Types</b>	Municipal, Public Supply
		<b>Aquifers</b>	Alluvium

## Hole Construction Information

<b>Date</b>	06/30/2005	<b>Depth</b>	97.00 ft
<b>Diameter</b>	20.00 in		

## Comments

# Casing Construction Information

Date	06/30/2005	Casing Type	Steel
Start Depth	-3.00 ft	End Depth	70.00 ft
Diameter	12.00 in	Amount	73.00 ft
Comments			

# Screen Construction Information

Date	06/30/2005	Slot Size	0.05
Screen Type	Steel	End Depth	95.00 ft
Start Depth	70.00 ft	Amount	25 ft
Diameter	12.00 in		
Comments			

# Grout Construction Information

Date	06/30/2005	Grout Placement	Unknown
Grout Type	Fill	End Depth	2.00 ft
Start Depth	0.00 ft		
Comments			

---

Date	06/30/2005	Grout Placement	Unknown
Grout Type	Cement	End Depth	52.00 ft
Start Depth	2.00 ft		
Comments			

---

Date	06/30/2005	Grout Placement	Unknown
Grout Type	Unknown	End Depth	54.00 ft
Start Depth	52.00 ft		
Comments			

# Gravel Pack Construction Information

Date	06/30/2005	Slot Size	
Gravel Pack Type	Unknown	End Depth	97.00 ft
Start Depth	54.00 ft		
Comments			

# Pump Construction Information

<b>Date</b>	06/30/2005	<b>Pump Type</b>	Turbine
<b>Diameter</b>	7.00 in	<b>Rating</b>	600
<b>Depth Intake</b>	50.00 ft		
<b>Comments</b>			

# Log Information

<b>Date</b>	
<b>Log Types</b>	Drillers log
<b>Prepared By</b>	Unknown
<b>Comments</b>	

# Water Production Information

<b>Date</b>	08/19/2004	<b>Start Time</b>	
<b>Aquifer</b>	Bedrock	<b>Yield</b>	600 gallons per minute
<b>Static Water Level</b>	13.00 ft	<b>Yield Method</b>	Orifice
<b>Pumping Water Level</b>	19 ft	<b>Pump Test</b>	Yes
<b>Measurement</b>	Tape	<b>Duration</b>	600 mins
<b>Pump Method</b>	Pumped		
<b>Comments</b>			

<https://www.iihr.uiowa.edu/igs/geosam/well/60330/general-information>