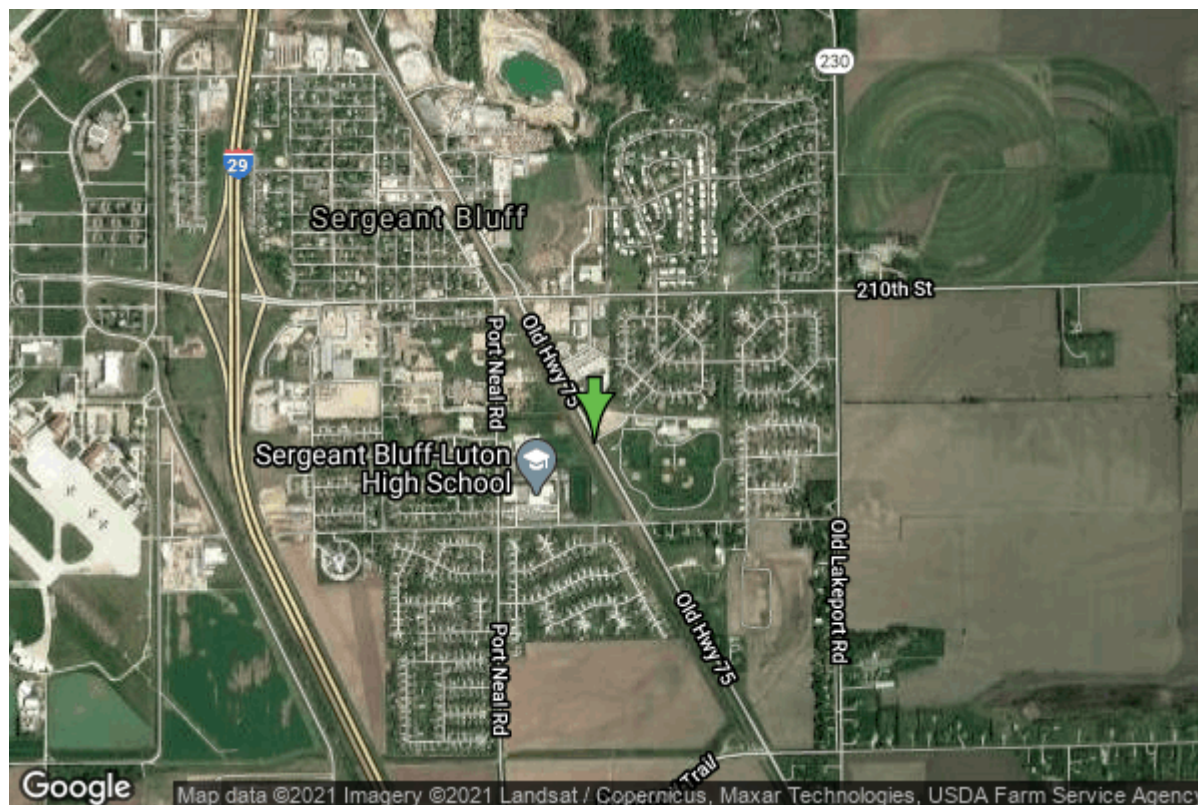


# Well W#60575 Information



<b>Date Received</b>	07/13/2005	<b>State</b>	Iowa
<b>Owner Name</b>	Sergeant Bluff, City Of	<b>County</b>	Woodbury
<b>Alt Name</b>	#6	<b>Quadrangle</b>	Sergeant Bluff, Iowa
<b>WNumber</b>	60575	<b>Township</b>	T88N
<b>PWTS ID</b>	2099478	<b>Range</b>	R47W
<b>PWS ID</b>	9774033	<b>Section</b>	32
<b>Storet ID</b>	0	<b>Quarter</b>	NW SW NW
<b>SDWIS ID</b>	2585478	<b>Latitude</b>	42.3958480000
<b>USGS ID</b>	0	<b>Longitude</b>	-96.3505700000
<b>Project Operator</b>	Source Water Protection Unknown	<b>Accuracy</b>	
		<b>UTM X</b>	224226
		<b>UTM Y</b>	4699168

<b>Site Type</b>	Drilled hole	<b>Drilling Company</b>	Layne Western - Ne.
<b>Well Status</b>	Active	<b>Drilling Date</b>	12/11/2004
<b>Field Located</b>	No	<b>Drilling Method</b>	Driven
<b>Elevation</b>	1089 ft	<b>Bedrock Depth</b>	116 ft
<b>Elevation Accuracy</b>	Topo Map Accurate to 2 ft	<b>Well Depth</b>	260 ft
<b>Landscape Position</b>	Unknown	<b>Total Depth</b>	266 ft
		<b>Well Types</b>	Municipal, Public Supply
		<b>Aquifers</b>	Dakota/Cretaceous

## Hole Construction Information

<b>Date</b>	08/31/2005	<b>Depth</b>	260.00 ft
<b>Diameter</b>	34.00 in		

## Comments

# Casing Construction Information

<b>Date</b>	08/31/2005	<b>Casing Type</b>	Unknown
<b>Start Depth</b>	-2.00 ft	<b>End Depth</b>	180.00 ft
<b>Diameter</b>	15.25 in	<b>Amount</b>	182.00 ft
<b>Comments</b>			

---

<b>Date</b>	08/31/2005	<b>Casing Type</b>	Unknown
<b>Start Depth</b>	200.00 ft	<b>End Depth</b>	235.00 ft
<b>Diameter</b>	15.25 in	<b>Amount</b>	35.00 ft
<b>Comments</b>			

# Screen Construction Information

<b>Date</b>	08/31/2005		
<b>Screen Type</b>	Unknown	<b>Slot Size</b>	0.04
<b>Start Depth</b>	180.00 ft	<b>End Depth</b>	200.00 ft
<b>Diameter</b>	16.00 in	<b>Amount</b>	20 ft
<b>Comments</b>			

---

<b>Date</b>	08/31/2005		
<b>Screen Type</b>	Unknown	<b>Slot Size</b>	0.02
<b>Start Depth</b>	235.00 ft	<b>End Depth</b>	260.00 ft
<b>Diameter</b>	16.00 in	<b>Amount</b>	25 ft
<b>Comments</b>			

# Grout Construction Information

<b>Date</b>	08/31/2005		
<b>Grout Type</b>	Cement	<b>Grout Placement</b>	Unknown
<b>Start Depth</b>	10.00 ft	<b>End Depth</b>	139.00 ft
<b>Comments</b>			

# Gravel Pack Construction Information

<b>Date</b>	08/31/2005		
<b>Gravel Pack Type</b>	Unknown	<b>Slot Size</b>	
<b>Start Depth</b>	160.00 ft	<b>End Depth</b>	260.00 ft
<b>Comments</b>			

# Pump Construction Information

<b>Date</b>	08/31/2005	<b>Pump Type</b>	Submersible
<b>Diameter</b>	10.00 in	<b>Rating</b>	400
<b>Depth Intake</b>	116.00 ft		
<b>Comments</b>			

# Log Information

<b>Date</b>	12/11/2004
<b>Log Types</b>	Drillers log
<b>Prepared By</b>	Layne Western - Ne.
<b>Comments</b>	

# Water Production Information

<b>Date</b>	09/28/2015	<b>Start Time</b>	
<b>Aquifer</b>		<b>Yield</b>	840 gallons per minute
<b>Static Water Level</b>	19.00 ft	<b>Yield Method</b>	Unknown
<b>Pumping Water Level</b>	38 ft	<b>Pump Test</b>	No
<b>Measurement</b>	Unknown	<b>Duration</b>	60 mins
<b>Pump Method</b>	Unknown		
<b>Comments</b>	Reported on 2015 DNR Dakota survey.		

---

<b>Date</b>	12/16/2004	<b>Start Time</b>	12:00
<b>Aquifer</b>	Alluvium	<b>Yield</b>	603 gallons per minute
<b>Static Water Level</b>	20.00 ft	<b>Yield Method</b>	Orifice
<b>Pumping Water Level</b>	36 ft	<b>Pump Test</b>	Yes
<b>Measurement</b>	Tape	<b>Duration</b>	480 mins
<b>Pump Method</b>	Airlifted		
<b>Comments</b>			

<https://www.iihr.uiowa.edu/igs/geosam/well/60575/general-information>