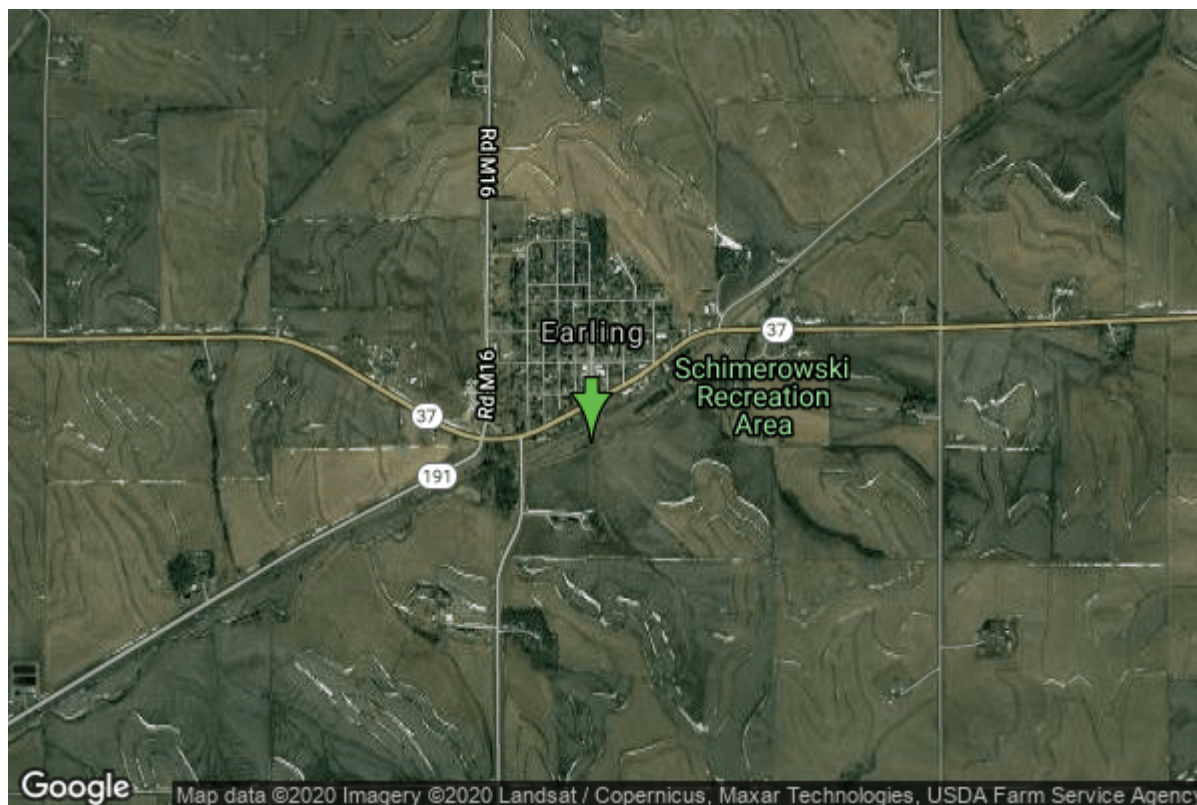


Well W#60611 Information



Date Received	09/07/2005	State	Iowa
Owner Name	Earling, City of	County	Shelby
Alt Name	#2 Replacement Well	Quadrangle	Earling, Iowa
WNumber	60611	Township	T80N
PWTS ID	0	Range	R39W
PWS ID	8320098	Section	5
Storet ID	0	Quarter	NW SE NW
SDWIS ID	2585721	Latitude	41.7729780000
USGS ID	0	Longitude	-95.4169800000
Project	Source Water Protection	Accuracy	
Operator	Unknown	UTM X	299115
		UTM Y	4627394

Site Type	Drilled hole	Drilling Company	Jacobs Well Drilling (Chuck)
Well Status	Active	Drilling Date	10/19/2004
Field Located	No	Drilling Method	Driven
Elevation	1300 ft	Bedrock Depth	0 ft
Elevation Accuracy	Digital Elevation Model Accurate to 5 ft	Well Depth	43 ft
Landscape Position	Valley	Total Depth	48 ft
		Well Types	Municipal, Public Supply
		Aquifers	Alluvium

Hole Construction Information

Date	09/21/2005		
Diameter	10.50 in	Depth	0.00 ft
Comments			

Casing Construction Information

Date	09/21/2005	Casing Type	PVC
Start Depth	38.00 ft	End Depth	43.00 ft
Diameter	6.00 in	Amount	5.00 ft
Comments			

Screen Construction Information

Date	09/21/2005		
Screen Type	PVC	Slot Size	0.10
Start Depth	38.00 ft	End Depth	43.00 ft
Diameter	6.00 in	Amount	5 ft
Comments			

Grout Construction Information

Date	09/21/2005		
Grout Type	Cement	Grout Placement	Unknown
Start Depth	0.00 ft	End Depth	37.00 ft
Comments			

Log Information

Date	
Log Types	Drillers log
Prepared By	Unknown
Comments	

Water Production Information

Date	10/25/2004	Start Time	
Aquifer	Alluvium		
Static Water Level	10.00 ft	Yield	47 gallons per minute
Pumping Water Level	37 ft	Yield Method	Volumetric
Measurement	Tape	Pump Test	Yes
Pump Method	Bailed	Duration	0 mins
Comments			

Chip Storage Information

Date	04/01/2016	Bin	
Storage	OD7-309	Number of Samples	9
Number of Boxes	1	Sample Gaps	
Sample Intervals	0	Sample Bottom	48 ft
Sample Top	0 ft	Washed Bottom	0 ft
Washed Top	0 ft		
Duplicate Storage			
Comments			

<https://www.iihr.uiowa.edu/igs/geosam/well/60611/general-information>