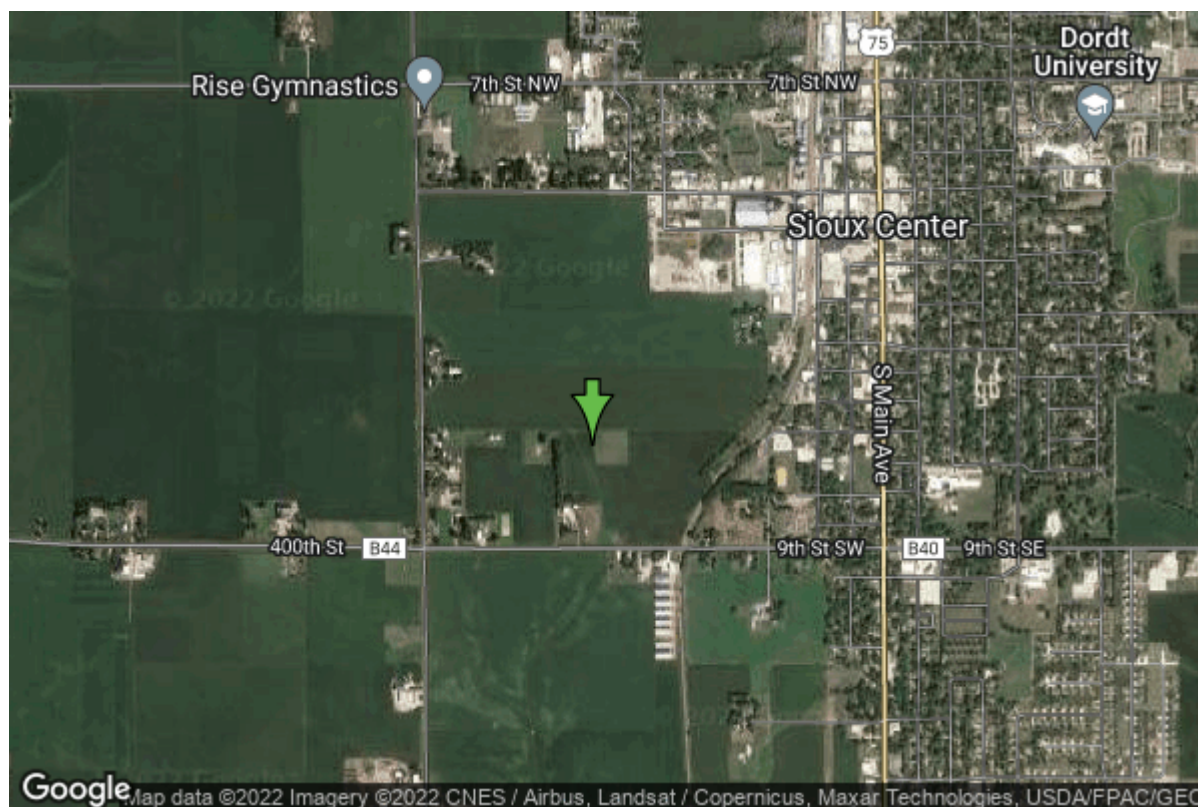


Well W#60888 Information



Date Received	10/12/2005	State	Iowa
Owner Name	Sioux Center, City Of	County	Sioux
Alt Name	Well #15	Quadrangle	Sioux Center, Iowa
WNumber	60888	Township	T95N
PWTS ID	0	Range	R45W
PWS ID	8486053	Section	5
Storet ID	0	Quarter	SW SE NE
SDWIS ID	2585740	Latitude	43.0728860000
USGS ID	0	Longitude	-96.1872220000
Project	Source Water Protection	Accuracy	
Operator	Unknown	UTM X	240513
		UTM Y	4773840

Site Type	Drilled hole	Drilling Company	Layne Western - Ia.
Well Status	Active	Drilling Date	09/22/2005
Field Located	No	Drilling Method	Driven
Elevation	1441 ft	Bedrock Depth	0 ft
Elevation Accuracy	Digital Elevation Model Accurate to 5 ft	Well Depth	0 ft
Landscape Position	Level Surface	Total Depth	343 ft
		Well Types	Municipal, Public Supply
		Aquifers	Pleistocene

Hole Construction Information

Date	11/01/2005	Depth	347.00 ft
Diameter	24.00 in		

Comments

Casing Construction Information

Date	11/01/2005	Casing Type	Steel
Start Depth	5.00 ft	End Depth	318.00 ft
Diameter	12.00 in	Amount	313.00 ft
Comments			

Date	11/01/2005	Casing Type	Steel
Start Depth	-3.00 ft	End Depth	5.00 ft
Diameter	0.00 in	Amount	8.00 ft
Comments			

Screen Construction Information

Date	11/01/2005	Slot Size	0.05
Screen Type	Steel	End Depth	343.00 ft
Start Depth	318.00 ft	Amount	25 ft
Diameter	12.00 in		
Comments			

Date	11/01/2005	Slot Size	0.00
Screen Type	Steel	End Depth	0.00 ft
Start Depth	0.00 ft	Amount	0 ft
Diameter	0.00 in		
Comments			

Grout Construction Information

Date	11/01/2005	Grout Placement	Unknown
Grout Type	Cement	End Depth	240.00 ft
Start Depth	10.00 ft		
Comments			

Gravel Pack Construction Information

Date	11/01/2005	Slot Size	
Gravel Pack Type	Unknown	End Depth	347.00 ft
Start Depth	245.00 ft		
Comments			

Pump Construction Information

Date	11/01/2005	Pump Type	Submersible
Diameter	6.00 in	Rating	300
Depth Intake	339.00 ft		
Comments			

Log Information

Date	
Log Types	Drillers log
Prepared By	Unknown
Comments	

Water Production Information

Date	08/23/2005	Start Time	
Aquifer	Alluvium	Yield	300 gallons per minute
Static Water Level	280.00 ft	Yield Method	Orifice
Pumping Water Level	309 ft	Pump Test	Yes
Measurement	Electric Line	Duration	800 mins
Pump Method	Pumped		
Comments			

<https://www.iihr.uiowa.edu/igs/geosam/well/60888/general-information>