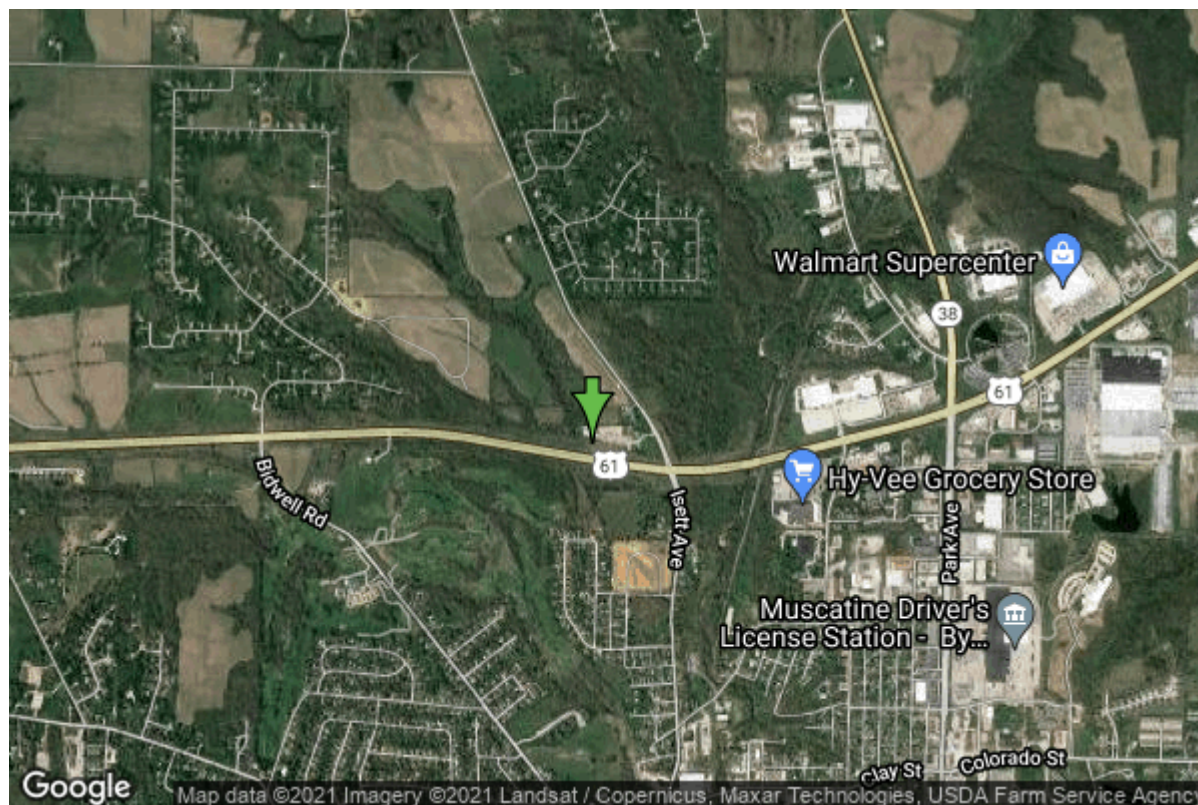


Well W#61213 Information



Date Received	12/08/2005	State	Iowa
Owner Name	Muscatine School Bus Barn	County	Muscatine
Alt Name	#1 (2005)	Quadrangle	Muscatine, Iowa-III.
WNumber	61213	Township	T77N
PWTS ID	0	Range	R2W
PWS ID	7048501	Section	23
Storet ID	0	Quarter	SE SE NW
SDWIS ID	2585461	Latitude	41.4526500000
USGS ID	0	Longitude	-91.0448390000
Project	Source Water Protection	Accuracy	
Operator	Unknown	UTM X	663306
		UTM Y	4590852

Site Type	Drilled hole	Drilling Company	Gingerich Well Co.
Well Status	Active	Drilling Date	10/25/2005
Field Located	No	Drilling Method	Driven
Elevation	611 ft	Bedrock Depth	75 ft
Elevation Accuracy	Digital Elevation Model Accurate to 5 ft	Well Depth	295 ft
Landscape Position	Level Surface	Total Depth	295 ft
		Well Types	Public Supply
		Aquifers	Silurian/Devonian

Hole Construction Information

Date	12/26/2005	Depth	200.00 ft
Diameter	11.00 in		

Comments

Date	12/26/2005		
Diameter	6.00 in	Depth	295.00 ft
Comments			

Casing Construction Information

Date	12/26/2005	Casing Type	PVC
Start Depth	-1.00 ft	End Depth	200.00 ft
Diameter	6.00 in	Amount	201.00 ft
Comments			

Date	12/26/2005	Casing Type	PVC
Start Depth	195.00 ft	End Depth	295.00 ft
Diameter	4.50 in	Amount	100.00 ft
Comments			

Date	12/26/2005	Casing Type	Perforated PVC
Start Depth	195.00 ft	End Depth	295.00 ft
Diameter	0.00 in	Amount	100.00 ft
Comments			

Date	12/26/2005	Casing Type	Perforated PVC
Start Depth	0.00 ft	End Depth	0.00 ft
Diameter	0.00 in	Amount	0.00 ft
Comments			

Grout Construction Information

Date	12/26/2005		
Grout Type	Bentonite (Clay)	Grout Placement	Unknown
Start Depth	0.00 ft	End Depth	200.00 ft
Comments			

Log Information

Date	10/25/2005		
Log Types	Drillers log		
Prepared By	Gingerich Well Co.		
Comments			

Water Production Information

Date	10/25/2005	Start Time	13:00
Aquifer	Bedrock		
Static Water Level	49.00 ft	Yield	80 gallons per minute
Pumping Water Level	120 ft	Yield Method	Estimate
Measurement	Estimate	Pump Test	Yes
Pump Method	Airlifted	Duration	200 mins
Comments			

<https://www.iihr.uiowa.edu/igs/geosam/well/61213/general-information>