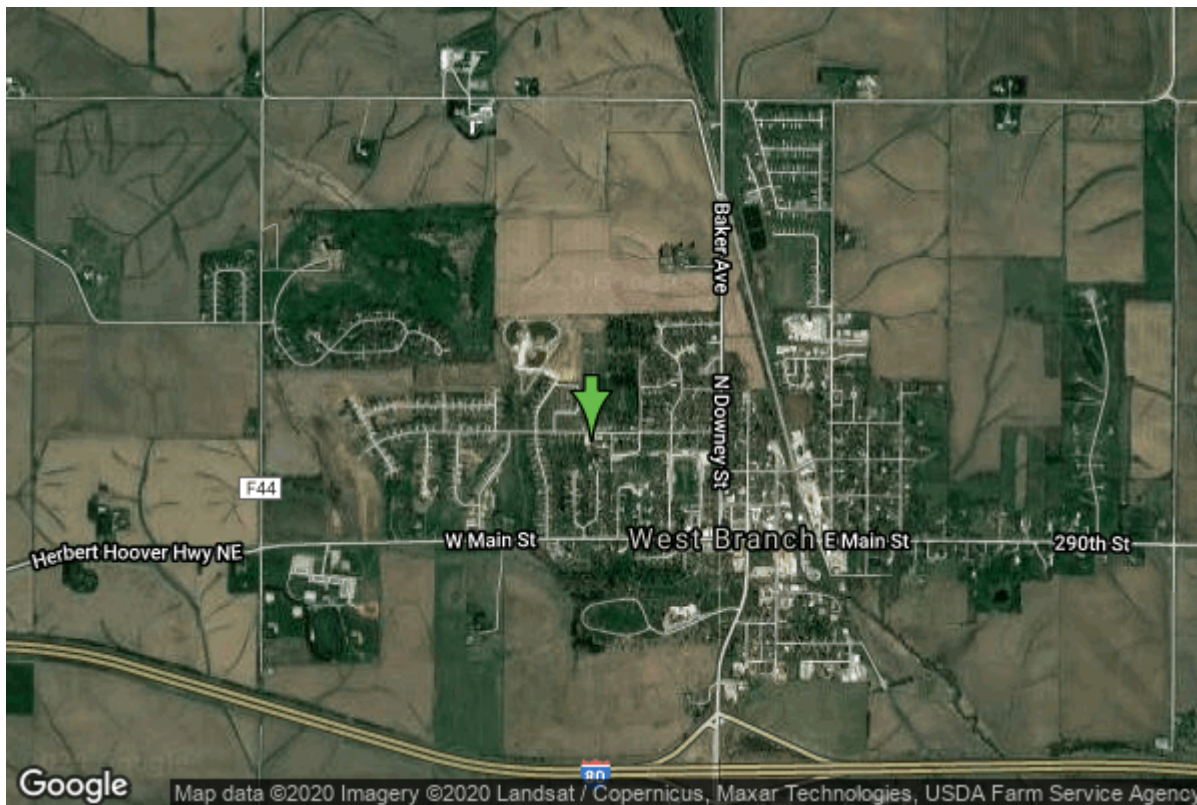


# Well W#61338 Information



<b>Date Received</b>	02/17/2006	<b>State</b>	Iowa
<b>Owner Name</b>	West Branch, City Of	<b>County</b>	Cedar
<b>Alt Name</b>	#6	<b>Quadrangle</b>	West Branch, Iowa
<b>WNumber</b>	61338	<b>Township</b>	T79N
<b>PWTS ID</b>	0	<b>Range</b>	R4W
<b>PWS ID</b>	1694000	<b>Section</b>	6
<b>Storet ID</b>	0	<b>Quarter</b>	SE SE NW
<b>SDWIS ID</b>	2585501	<b>Latitude</b>	41.6744860000
<b>USGS ID</b>	0	<b>Longitude</b>	-91.3514670000
<b>Project</b>	Source Water Protection	<b>Accuracy</b>	
<b>Operator</b>	Unknown	<b>UTM X</b>	637223
		<b>UTM Y</b>	4614949

<b>Site Type</b>	Drilled hole	<b>Drilling Company</b>	Layne Western - Ia.
<b>Well Status</b>	Active	<b>Drilling Date</b>	08/12/2005
<b>Field Located</b>	No	<b>Drilling Method</b>	Rotary
<b>Elevation</b>	784 ft	<b>Bedrock Depth</b>	103 ft
<b>Elevation Accuracy</b>	Topo Map Accurate to 2 ft	<b>Well Depth</b>	1579 ft
<b>Landscape Position</b>	Upland	<b>Total Depth</b>	1579 ft
		<b>Well Types</b>	Municipal, Public Supply
		<b>Aquifers</b>	Cambrian-Ordovician

## Hole Construction Information

<b>Date</b>	08/12/2005	<b>Depth</b>	116.00 ft
<b>Diameter</b>	25.00 in		

## Comments

---

Date	08/12/2005	Depth	623.00 ft
Diameter	19.00 in		
Comments			

---

Date	08/12/2005	Depth	1120.00 ft
Diameter	14.75 in		
Comments			

---

Date	08/12/2005	Depth	1579.00 ft
Diameter	9.88 in		
Comments			

## Casing Construction Information

Date	08/12/2005	Casing Type	Steel
Start Depth	0.00 ft	End Depth	116.00 ft
Diameter	20.00 in	Amount	116.00 ft
Comments			

---

Date	08/12/2005	Casing Type	Steel
Start Depth	0.00 ft	End Depth	623.00 ft
Diameter	14.00 in	Amount	623.00 ft
Comments			

---

Date	08/12/2005	Casing Type	Steel
Start Depth	623.00 ft	End Depth	1120.00 ft
Diameter	10.75 in	Amount	497.00 ft
Comments			

## Grout Construction Information

Date	08/12/2005	Grout Placement	Unknown
Grout Type	Neat Cement	End Depth	1120.00 ft
Start Depth	0.00 ft		
Comments	56 cu. yds.		

## Pump Construction Information

Date	09/12/2005	Pump Type	Submersible
Diameter	7.00 in	Rating	500
Depth Intake	512.00 ft		
Comments			

# Log Information

**Date**  
**Log Types** Drillers log  
**Prepared By** Unknown  
**Comments**

# Water Production Information

<b>Date</b>	09/30/2014	<b>Start Time</b>	
<b>Aquifer</b>		<b>Yield</b>	0 gallons per minute
<b>Static Water Level</b>	305.00 ft	<b>Yield Method</b>	
<b>Pumping Water Level</b>	314 ft	<b>Pump Test</b>	No
<b>Measurement</b>		<b>Duration</b>	0 mins
<b>Pump Method</b>			
<b>Comments</b>	Reported on DNR 2014 Jordan Questionnaire		

---

<b>Date</b>	09/14/2005	<b>Start Time</b>	09:00
<b>Aquifer</b>	Unknown	<b>Yield</b>	500 gallons per minute
<b>Static Water Level</b>	301.00 ft	<b>Yield Method</b>	Orifice
<b>Pumping Water Level</b>	310 ft	<b>Pump Test</b>	Yes
<b>Measurement</b>	Electric Line	<b>Duration</b>	1080 mins
<b>Pump Method</b>	Airlifted		
<b>Comments</b>			

<https://www.iihr.uiowa.edu/igs/geosam/well/61338/general-information>