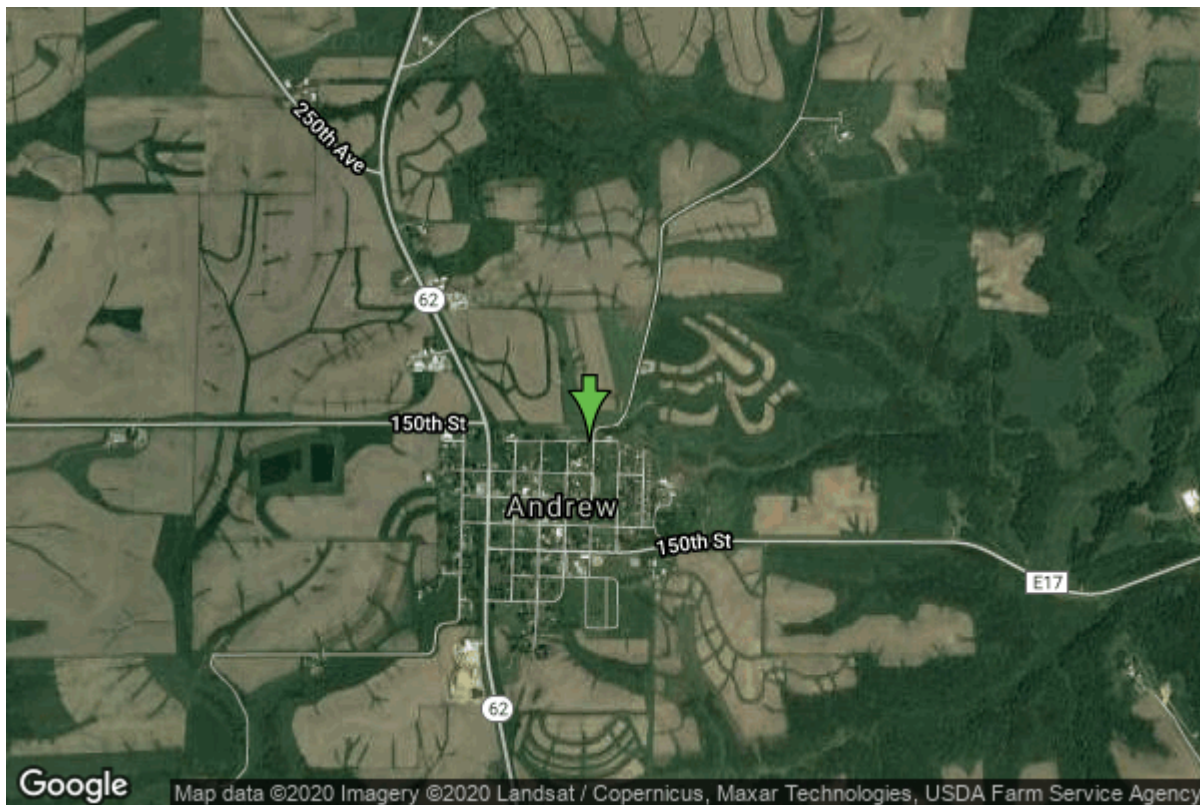


Well W#6141 Information



Date Received		State	Iowa
Owner Name	Andrew, City Of	County	Jackson
Alt Name	#1	Quadrangle	Andrew, Iowa
WNumber	6141	Township	T85N
PWTS ID	0	Range	R3E
PWS ID	4903050	Section	22
Storet ID	0	Quarter	SE NE NE
SDWIS ID	2410154	Latitude	42.1563300000
USGS ID	0	Longitude	-90.5895100000
Project	Source Water Protection	Accuracy	
Operator	Unknown	UTM X	699148
		UTM Y	4669946

Site Type	Drilled hole	Drilling Company	Edwards Inc., D.E.
Well Status	Not Used	Drilling Date	08/18/1953
Field Located	No	Drilling Method	Cable
Elevation	804 ft	Bedrock Depth	5 ft
Elevation Accuracy	Digital Elevation Model Accurate to 5 ft	Well Depth	247 ft
Landscape Position	Hillside	Total Depth	247 ft
		Well Types	Municipal, Public Supply
		Aquifers	Silurian

Casing Construction Information

Date	08/20/1953	Casing Type	Steel
Start Depth	0.00 ft	End Depth	0.00 ft

Diameter	8.00 in	Amount	29.00 ft
Comments			

Date	08/20/1953	Casing Type	Steel
Start Depth	-2.50 ft	End Depth	42.50 ft
Diameter	6.25 in	Amount	45.00 ft
Comments			

Log Information

Date	10/22/1953
Log Types	Strip log
Prepared By	Unknown
Comments	

Date	
Log Types	Drillers log
Prepared By	Andrew, City Of
Comments	

Stratigraphy Information

System	Quaternary		
Series	Holocene Series		
Group			
Formation	Deforest		
Member			
Submember			
Start Depth	0.00 ft	End Depth	5.00 ft
Contact Accuracy			
Penetration			
Primary Lithology	Soil Or Fill	Percent	100
Secondary Lithology		Percent	
Tertiary Lithology		Percent	
Comments			

System	Silurian		
Series			
Group			
Formation	Hopkinton		
Member			
Submember			
Start Depth	5.00 ft	End Depth	153.00 ft
Contact Accuracy			
Penetration			
Primary Lithology	Dolomite	Percent	0
Secondary Lithology	Chert/Chalcedony	Percent	0

Tertiary Lithology		Percent	
Comments			
System	Silurian		
Series			
Group			
Formation	Blanding		
Member			
Submember			
Start Depth	153.00 ft	End Depth	192.00 ft
Contact Accuracy			
Penetration			
Primary Lithology	Dolomite	Percent	0
Secondary Lithology	Chert/Chalcedony	Percent	0
Tertiary Lithology		Percent	
Comments			
System	Silurian		
Series			
Group			
Formation	Tete Des Morts		
Member			
Submember			
Start Depth	192.00 ft	End Depth	208.00 ft
Contact Accuracy			
Penetration			
Primary Lithology	Dolomite	Percent	0
Secondary Lithology	Chert/Chalcedony	Percent	0
Tertiary Lithology		Percent	
Comments			
System	Silurian		
Series			
Group			
Formation	Mosalem		
Member			
Submember			
Start Depth	208.00 ft	End Depth	235.00 ft
Contact Accuracy			
Penetration			
Primary Lithology	Dolomite	Percent	0
Secondary Lithology	Sandstone	Percent	0
Tertiary Lithology		Percent	
Comments			
System	Ordovician		
Series			
Group			
Formation	Maquoketa		

Member			
Submember			
Start Depth	235.00 ft	End Depth	247.00 ft
Contact Accuracy			
Penetration			
Primary Lithology		Percent	
Secondary Lithology		Percent	
Tertiary Lithology		Percent	
Comments			

Water Production Information

Date	08/20/1953	Start Time	
Aquifer	Unknown		
Static Water Level	145.00 ft	Yield	33 gallons per minute
Pumping Water Level	161 ft	Yield Method	Unknown
Measurement	Unknown	Pump Test	Yes
Pump Method	Unknown	Duration	0 mins
Comments			

Date		Start Time	
Aquifer	Unknown		
Static Water Level	140.00 ft	Yield	35 gallons per minute
Pumping Water Level	164 ft	Yield Method	Unknown
Measurement	Unknown	Pump Test	Yes
Pump Method	Unknown	Duration	0 mins
Comments			

Chip Storage Information

Date	09/15/1953		
Storage	EC1-1	Bin	
Number of Boxes	1	Number of Samples	28
Sample Intervals	0	Sample Gaps	61-63,235-247
Sample Top	0 ft	Sample Bottom	235 ft
Washed Top	0 ft	Washed Bottom	235 ft
Duplicate Storage			
Comments			

<https://www.iuhr.uiowa.edu/igs/geosam/well/6141/general-information>