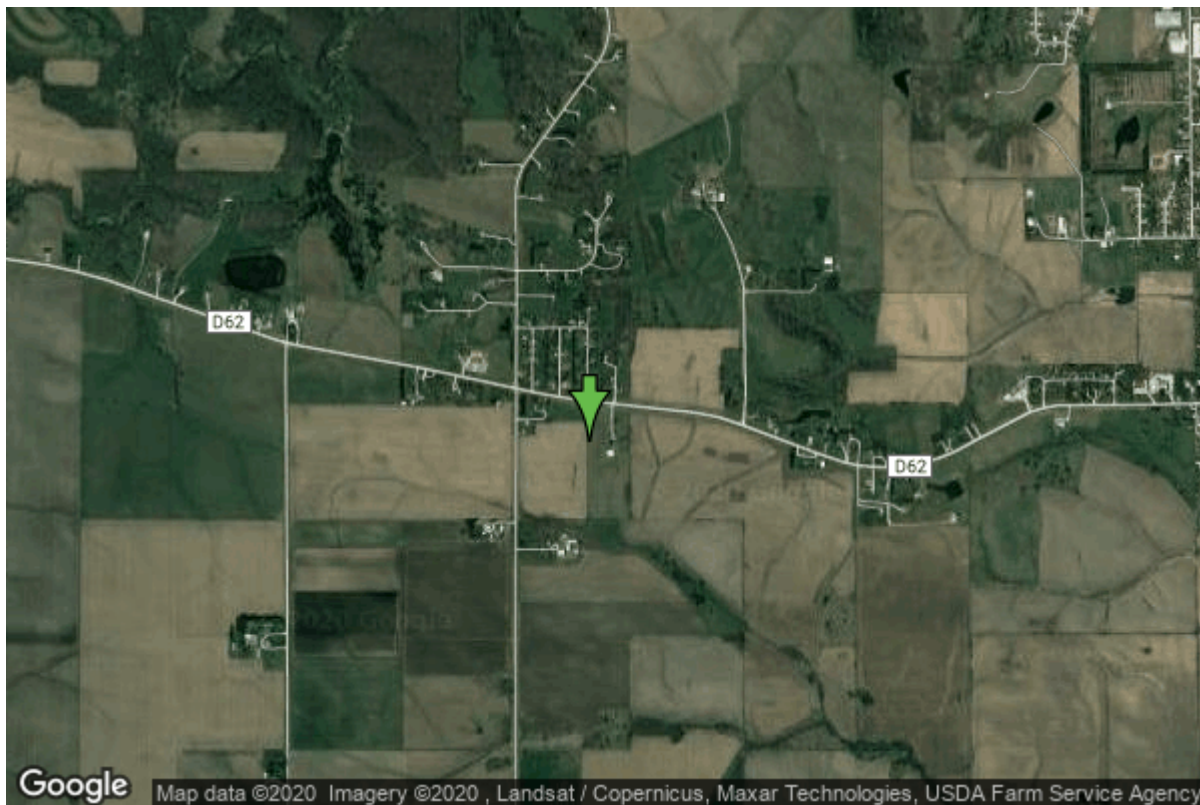


# Well W#61550 Information



<b>Date Received</b>	03/17/2006	<b>State</b>	Iowa
<b>Owner Name</b>	Bacon Addition Well #2	<b>County</b>	Jones
<b>Alt Name</b>	#2	<b>Quadrangle</b>	Monticello, Iowa
<b>WNumber</b>	61550	<b>Township</b>	T86N
<b>PWTS ID</b>	0	<b>Range</b>	R3W
<b>PWS ID</b>	5343301	<b>Section</b>	29
<b>Storet ID</b>	0	<b>Quarter</b>	NW NW NE
<b>SDWIS ID</b>	2585599	<b>Latitude</b>	42.2368060000
<b>USGS ID</b>	0	<b>Longitude</b>	-91.2247210000
<b>Project</b>	Source Water Protection	<b>Accuracy</b>	
<b>Operator</b>	Unknown	<b>UTM X</b>	646480
		<b>UTM Y</b>	4677595

<b>Site Type</b>	Drilled hole	<b>Drilling Company</b>	Gingerich Well Co.
<b>Well Status</b>	Active	<b>Drilling Date</b>	02/20/2006
<b>Field Located</b>	No	<b>Drilling Method</b>	Driven
<b>Elevation</b>	931 ft	<b>Bedrock Depth</b>	72 ft
<b>Elevation Accuracy</b>	Digital Elevation Model Accurate to 5 ft	<b>Well Depth</b>	385 ft
<b>Landscape Position</b>	Upland	<b>Total Depth</b>	385 ft
		<b>Well Types</b>	Public Supply
		<b>Aquifers</b>	Ordovician

## Hole Construction Information

<b>Date</b>	03/29/2006	<b>Depth</b>	135.00 ft
<b>Diameter</b>	18.00 in		

## Comments

---

Date	03/29/2006	Depth	385.00 ft
Diameter	7.88 in		
Comments			

## Casing Construction Information

Date	03/29/2006	Casing Type	Steel
Start Depth	-1.00 ft	End Depth	135.00 ft
Diameter	8.00 in	Amount	136.00 ft
Comments			

## Grout Construction Information

Date	03/29/2006	Grout Placement	Unknown
Grout Type	Cement	End Depth	135.00 ft
Start Depth	0.00 ft		
Comments			

## Log Information

Date	
Log Types	Drillers log
Prepared By	Unknown
Comments	

## Water Production Information

Date	02/20/2006	Start Time	16:00
Aquifer	Bedrock	Yield	75 gallons per minute
Static Water Level	125.00 ft	Yield Method	Estimate
Pumping Water Level	200 ft	Pump Test	Yes
Measurement	Estimate	Duration	200 mins
Pump Method	Airlifted		
Comments			

## Chip Storage Information

Date	01/03/2007	Bin	
Storage	OD4-1403>1404	Number of Samples	77
Number of Boxes	2	Sample Gaps	
Sample Intervals	5	Sample Bottom	385 ft
Sample Top	0 ft	Washed Bottom	395 ft
Washed Top	140 ft		

**Duplicate Storage  
Comments**

<https://www.ihr.uiowa.edu/igs/geosam/well/61550/general-information>