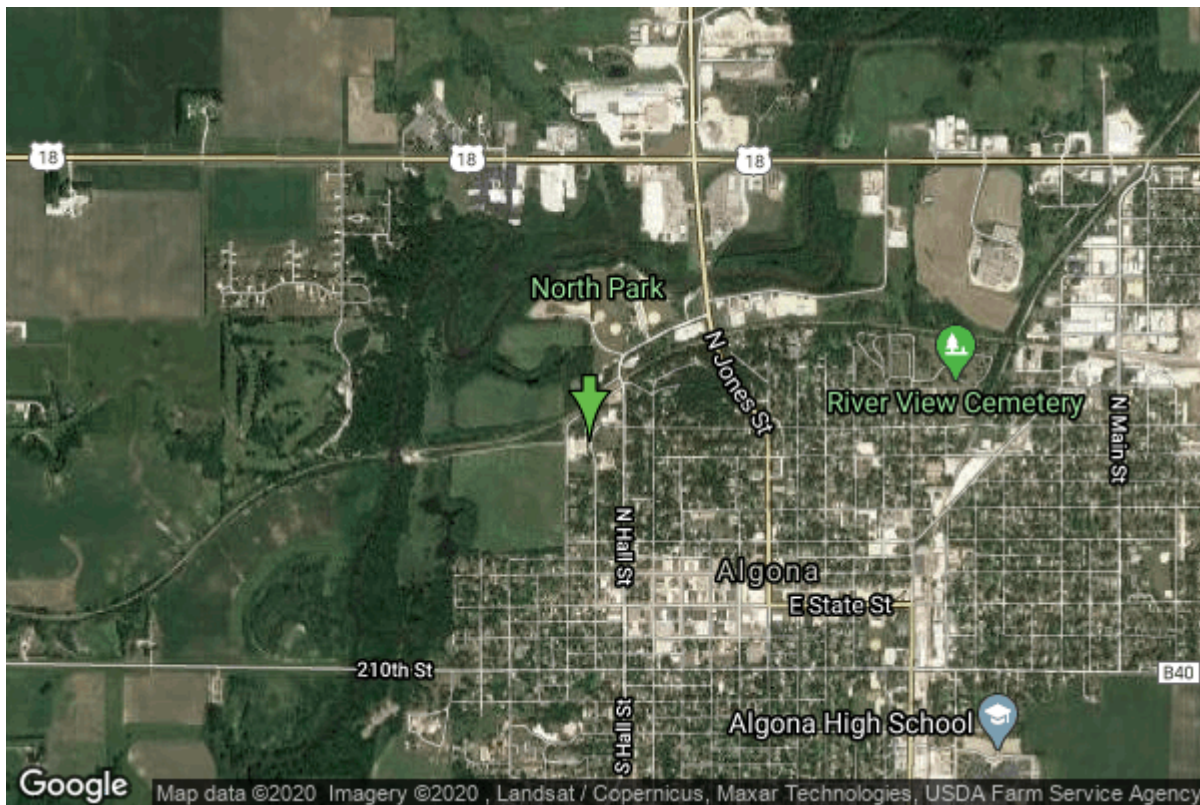


Well W#617 Information



Date Received		State	Iowa
Owner Name	Algona, City Of	County	Kossuth
Alt Name	#1	Quadrangle	Algona, Iowa
WNumber	617	Township	T95N
PWTS ID	0	Range	R29W
PWS ID	5502015	Section	2
Storet ID	0	Quarter	SW NE NW
SDWIS ID	2412234	Latitude	43.0739560000
USGS ID	0	Longitude	-94.2399880000
Project Operator	Source Water Protection Unknown	Accuracy	
		UTM X	399051
		UTM Y	4769774

Site Type	Drilled hole	Drilling Company	Thorpe Well Co.
Well Status	Not Used	Drilling Date	10/15/1936
Field Located	No	Drilling Method	Unknown
Elevation	1163 ft	Bedrock Depth	100 ft
Elevation Accuracy	Digital Elevation Model Accurate to 5 ft	Well Depth	163 ft
Landscape Position	Hillside	Total Depth	163 ft
		Well Types	Municipal, Public Supply
		Aquifers	Dakota/Cretaceous

Casing Construction Information

Date	07/01/1936	Casing Type	Unknown
Start Depth	0.00 ft	End Depth	93.00 ft

Diameter	24.00 in	Amount	93.00 ft
Comments			

Date	07/01/1936	Casing Type	Unknown
Start Depth	0.00 ft	End Depth	0.00 ft
Diameter	10.00 in	Amount	93.00 ft
Comments			

Screen Construction Information

Date	07/01/1936		
Screen Type	Unknown	Slot Size	0.00
Start Depth	93.00 ft	End Depth	163.00 ft
Diameter	10.00 in	Amount	70 ft
Comments			

Pump Construction Information

Date	07/01/1936	Pump Type	Turbine
Diameter	0.00 in	Rating	0
Depth Intake	0.00 ft		
Comments			

Log Information

Date	10/05/1950
Log Types	Strip log
Prepared By	Unknown
Comments	

Date	
Log Types	Drillers log
Prepared By	Algona, City Of
Comments	

Stratigraphy Information

System	Quaternary		
Series	Pleistocene Series		
Group	Wisconsinan Episode		
Formation	Dows		
Member			
Submember			
Start Depth	0.00 ft	End Depth	15.00 ft
Contact Accuracy			

Penetration			
Primary Lithology	Till	Percent	100
Secondary Lithology	Unknown	Percent	0
Tertiary Lithology	Unknown	Percent	0
Comments			
System	Quaternary		
Series	Pleistocene Series		
Group	Wisconsinan Episode		
Formation	Dows		
Member			
Submember			
Start Depth	15.00 ft	End Depth	60.00 ft
Contact Accuracy			
Penetration			
Primary Lithology	Till - Unoxidized And Unleached	Percent	100
Secondary Lithology		Percent	
Tertiary Lithology		Percent	
Comments			
System	Quaternary		
Series	Pleistocene Series		
Group			
Formation			
Member			
Submember			
Start Depth	60.00 ft	End Depth	100.00 ft
Contact Accuracy			
Penetration			
Primary Lithology	Sand And Gravel	Percent	100
Secondary Lithology	Unknown	Percent	0
Tertiary Lithology	Unknown	Percent	0
Comments			
System	Cretaceous		
Series			
Group	Fort Benton ("Lower Colorado ")		
Formation	Dakota		
Member			
Submember			
Start Depth	100.00 ft	End Depth	163.00 ft
Contact Accuracy			
Penetration			
Primary Lithology	Sandstone	Percent	100
Secondary Lithology		Percent	
Tertiary Lithology		Percent	
Comments			

Water Production Information

Date	07/01/1936	Start Time	
Aquifer	Unknown		
Static Water Level	62.00 ft	Yield	500 gallons per minute
Pumping Water Level	64 ft	Yield Method	Unknown
Measurement	Unknown	Pump Test	Yes
Pump Method	Unknown	Duration	0 mins
Comments			

Chip Storage Information

Date		Bin	
Storage	WD8-3	Number of Samples	10
Number of Boxes	1	Sample Gaps	0-3
Sample Intervals	0	Sample Bottom	165 ft
Sample Top	3 ft	Washed Bottom	0 ft
Washed Top	0 ft		
Duplicate Storage			
Comments			

<https://www.iuhr.uiowa.edu/igs/geosam/well/617/general-information>