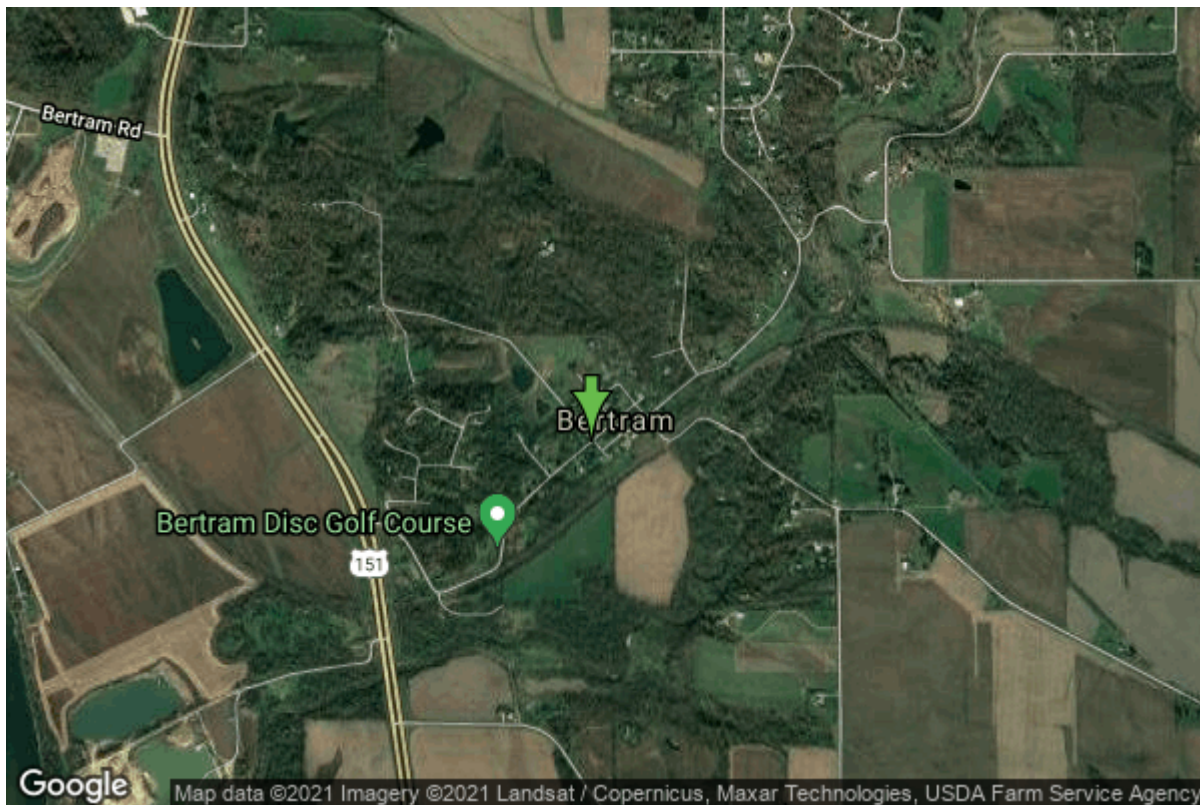


# Well W#62001 Information



<b>Date Received</b>	06/20/2006	<b>State</b>	Iowa
<b>Owner Name</b>	Bertram, City Of	<b>County</b>	Linn
<b>Alt Name</b>	#1	<b>Quadrangle</b>	Bertram, Iowa
<b>WNumber</b>	62001	<b>Township</b>	T83N
<b>PWTS ID</b>	0	<b>Range</b>	R6W
<b>PWS ID</b>	5710001	<b>Section</b>	34
<b>Storet ID</b>	0	<b>Quarter</b>	SW SE NW
<b>SDWIS ID</b>	2585116	<b>Latitude</b>	41.9490360000
<b>USGS ID</b>	0	<b>Longitude</b>	-91.5358510000
<b>Project</b>	Source Water Protection	<b>Accuracy</b>	
<b>Operator</b>	Unknown	<b>UTM X</b>	621355
		<b>UTM Y</b>	4645154

---

<b>Site Type</b>	Drilled hole	<b>Drilling Company</b>	Greiner Well Service, Inc.
<b>Well Status</b>	Active	<b>Drilling Date</b>	05/26/2006
<b>Field Located</b>	No	<b>Drilling Method</b>	Unknown
<b>Elevation</b>	727 ft	<b>Bedrock Depth</b>	40 ft
<b>Elevation Accuracy</b>	Digital Elevation Model Accurate to 5 ft	<b>Well Depth</b>	446 ft
<b>Landscape Position</b>	Unknown	<b>Total Depth</b>	446 ft
		<b>Well Types</b>	Municipal, Public Supply
		<b>Aquifers</b>	Silurian

# Hole Construction Information

<b>Date</b>	06/20/2006	<b>Depth</b>	40.00 ft
<b>Diameter</b>	12.50 in		
<b>Comments</b>			

---

<b>Date</b>	06/20/2006	<b>Depth</b>	326.50 ft
<b>Diameter</b>	12.00 in		
<b>Comments</b>			

---

<b>Date</b>	06/20/2006	<b>Depth</b>	446.00 ft
<b>Diameter</b>	6.00 in		
<b>Comments</b>			

# Casing Construction Information

<b>Date</b>	06/20/2006	<b>Casing Type</b>	Steel
<b>Start Depth</b>	-3.00 ft	<b>End Depth</b>	326.50 ft
<b>Diameter</b>	6.00 in	<b>Amount</b>	329.50 ft
<b>Comments</b>			

---

<b>Date</b>	06/20/2006	<b>Casing Type</b>	Steel
<b>Start Depth</b>	0.00 ft	<b>End Depth</b>	40.00 ft
<b>Diameter</b>	12.00 in	<b>Amount</b>	40.00 ft
<b>Comments</b>			

---

<b>Date</b>	06/20/2006	<b>Casing Type</b>	PVC
<b>Start Depth</b>	306.00 ft	<b>End Depth</b>	446.00 ft
<b>Diameter</b>	4.50 in	<b>Amount</b>	140.00 ft
<b>Comments</b>			

---

<b>Date</b>	06/20/2006	<b>Casing Type</b>	Perforated PVC
<b>Start Depth</b>	0.00 ft	<b>End Depth</b>	0.00 ft
<b>Diameter</b>	0.00 in	<b>Amount</b>	0.00 ft
<b>Comments</b>			

---

<b>Date</b>	06/20/2006	<b>Casing Type</b>	Perforated Steel
<b>Start Depth</b>	346.00 ft	<b>End Depth</b>	446.00 ft
<b>Diameter</b>	0.00 in	<b>Amount</b>	100.00 ft
<b>Comments</b>			

# Grout Construction Information

<b>Date</b>	06/20/2006	<b>Grout Placement</b>	Unknown
<b>Grout Type</b>	Bentonite (Clay)		

<b>Start Depth</b>	0.00 ft	<b>End Depth</b>	326.00 ft
<b>Comments</b>			

## Log Information

<b>Date</b>	
<b>Log Types</b>	Drillers log
<b>Prepared By</b>	Unknown
<b>Comments</b>	

## Water Production Information

<b>Date</b>		<b>Start Time</b>	
<b>Aquifer</b>	Bedrock	<b>Yield</b>	150 gallons per minute
<b>Static Water Level</b>	58.00 ft	<b>Yield Method</b>	Estimate
<b>Pumping Water Level</b>	446 ft	<b>Pump Test</b>	Yes
<b>Measurement</b>	Unknown	<b>Duration</b>	100 mins
<b>Pump Method</b>	Airlifted		
<b>Comments</b>			

## Chip Storage Information

<b>Date</b>	05/24/2007	<b>Bin</b>	
<b>Storage</b>	OD4-1450>1451	<b>Number of Samples</b>	82
<b>Number of Boxes</b>	2	<b>Sample Gaps</b>	
<b>Sample Intervals</b>	5	<b>Sample Bottom</b>	446 ft
<b>Sample Top</b>	0 ft	<b>Washed Bottom</b>	446 ft
<b>Washed Top</b>	41 ft		
<b>Duplicate Storage</b>			
<b>Comments</b>			

<https://www.ihr.uiowa.edu/igs/geosam/well/62001/general-information>