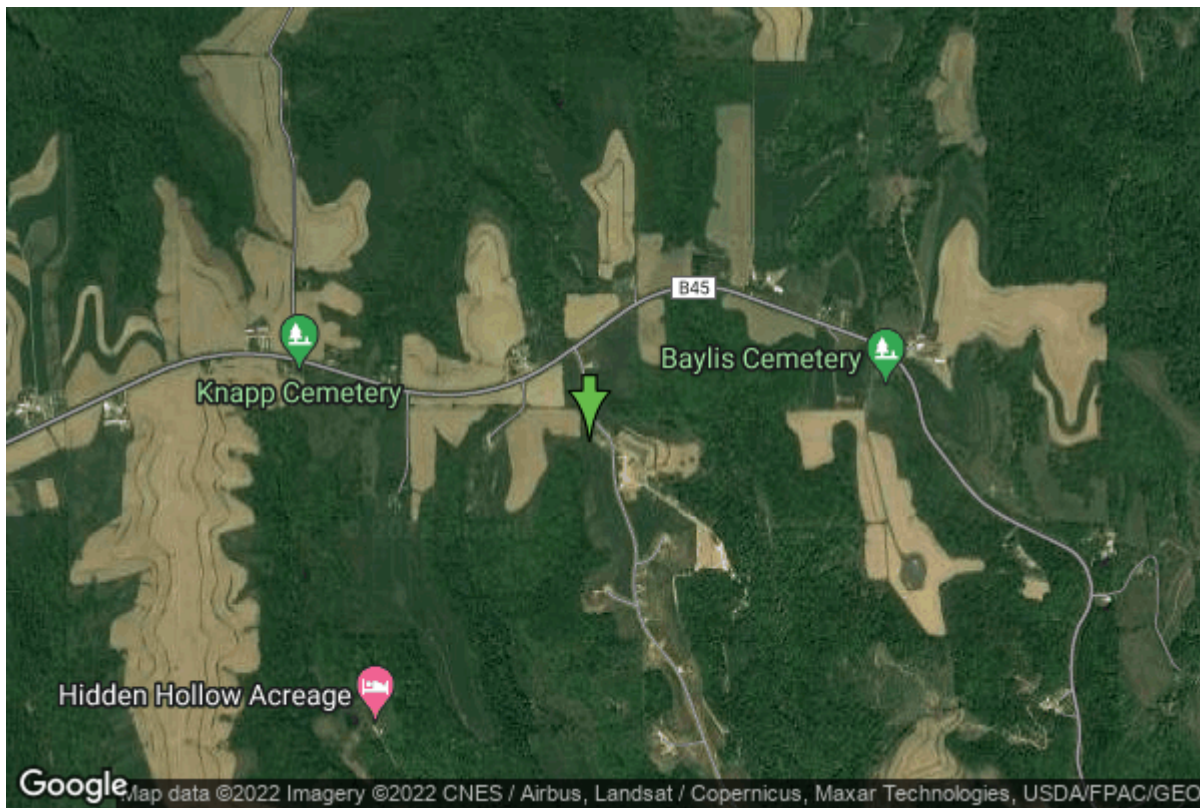


# Well W#62044 Information



<b>Date Received</b>	07/07/2006	<b>State</b>	Iowa
<b>Owner Name</b>	Marquette, City Of	<b>County</b>	Clayton
<b>Alt Name</b>	CITY WATER DEPT.; WELL 3, 4-06	<b>Quadrangle</b>	Prairie Du Chien, Iowa- Wis.
<b>WNumber</b>	62044	<b>Township</b>	T95N
<b>PWTS ID</b>	0	<b>Range</b>	R3W
<b>PWS ID</b>	2256041	<b>Section</b>	9
<b>Storet ID</b>	0	<b>Quarter</b>	NW SW NE
<b>SDWIS ID</b>	2585975	<b>Latitude</b>	43.0611730000
<b>USGS ID</b>	0	<b>Longitude</b>	-91.2080820000
<b>Project</b>	Source Water Protection	<b>Accuracy</b>	
<b>Operator</b>	Unknown	<b>UTM X</b>	645913
		<b>UTM Y</b>	4769166
<hr/>			
<b>Site Type</b>	Drilled hole	<b>Drilling Company</b>	Northway Corporation
<b>Well Status</b>	Active	<b>Drilling Date</b>	06/14/2006
<b>Field Located</b>	No	<b>Drilling Method</b>	Driven
<b>Elevation</b>	1106 ft	<b>Bedrock Depth</b>	34 ft
<b>Elevation Accuracy</b>	Digital Elevation Model Accurate to 5 ft	<b>Well Depth</b>	929 ft
<b>Landscape Position</b>	Upland	<b>Total Depth</b>	929 ft
		<b>Well Types</b>	Municipal, Public Supply
		<b>Aquifers</b>	Cambrian

# Hole Construction Information

Date	07/07/2006		
Diameter	19.00 in	Depth	42.00 ft
Comments			

---

Date	07/07/2006		
Diameter	13.88 in	Depth	615.00 ft
Comments			

---

Date	07/07/2006		
Diameter	7.88 in	Depth	929.00 ft
Comments			

# Casing Construction Information

Date	07/07/2006	Casing Type	PVC
Start Depth	0.00 ft	End Depth	42.00 ft
Diameter	14.00 in	Amount	42.00 ft
Comments			

---

Date	07/07/2006	Casing Type	PVC
Start Depth	-2.00 ft	End Depth	615.00 ft
Diameter	8.00 in	Amount	617.00 ft
Comments			

# Grout Construction Information

Date	07/07/2006		
Grout Type	Cement	Grout Placement	Unknown
Start Depth	0.00 ft	End Depth	42.00 ft
Comments			

---

Date	07/07/2006		
Grout Type	Cement	Grout Placement	Unknown
Start Depth	0.00 ft	End Depth	615.00 ft
Comments			

# Log Information

Date	01/19/2016		
Log Types	Strip log		
Prepared By	Clark, Ryan		
Comments			

---

Date  
Log Types Drillers log  
Prepared By Unknown  
Comments

## Stratigraphy Information

---

System Quaternary  
Series  
Group  
Formation  
Member  
Submember  
Start Depth 0.00 ft End Depth 20.00 ft  
Contact Accuracy  
Penetration  
Primary Lithology Soil Or Fill Percent 100  
Secondary Lithology Percent  
Tertiary Lithology Percent  
Comments

---

System Ordovician  
Series  
Group Galena  
Formation Dunleith  
Member  
Submember  
Start Depth 20.00 ft End Depth 65.00 ft  
Contact Accuracy  
Penetration  
Primary Lithology Limestone Percent 45  
Secondary Lithology Dolomite Percent 35  
Tertiary Lithology Chert/Chalcedony Percent 20  
Comments

---

System Ordovician  
Series  
Group Galena  
Formation Decorah  
Member  
Submember  
Start Depth 65.00 ft End Depth 105.00 ft  
Contact Accuracy  
Penetration  
Primary Lithology Limestone Percent 70  
Secondary Lithology Shale Percent 30  
Tertiary Lithology Percent

**Comments**

---

**System** Ordovician  
**Series**  
**Group** Galena  
**Formation** Platteville  
**Member**  
**Submember**  
**Start Depth** 105.00 ft **End Depth** 156.00 ft  
**Contact Accuracy**  
**Penetration**  
**Primary Lithology** Limestone **Percent** 60  
**Secondary Lithology** Dolomite **Percent** 40  
**Tertiary Lithology** **Percent**  
**Comments**

---

**System** Ordovician  
**Series**  
**Group** Ansell  
**Formation** St. Peter Sandstone  
**Member**  
**Submember**  
**Start Depth** 156.00 ft **End Depth** 208.00 ft  
**Contact Accuracy**  
**Penetration**  
**Primary Lithology** Sandstone **Percent** 100  
**Secondary Lithology** **Percent**  
**Tertiary Lithology** **Percent**  
**Comments**

---

**System** Ordovician  
**Series**  
**Group** Prairie Du Chien  
**Formation**  
**Member**  
**Submember**  
**Start Depth** 208.00 ft **End Depth** 450.00 ft  
**Contact Accuracy**  
**Penetration**  
**Primary Lithology** Dolomite **Percent** 85  
**Secondary Lithology** Shale **Percent** 10  
**Tertiary Lithology** Sandstone **Percent** 5  
**Comments**

---

**System** Cambrian  
**Series**  
**Group**  
**Formation** Jordan  
**Member**

<b>Submember</b>			
<b>Start Depth</b>	450.00 ft	<b>End Depth</b>	580.00 ft
<b>Contact Accuracy</b>			
<b>Penetration</b>			
<b>Primary Lithology</b>	Sandstone	<b>Percent</b>	60
<b>Secondary Lithology</b>	Dolomite	<b>Percent</b>	30
<b>Tertiary Lithology</b>	Shale	<b>Percent</b>	10
<b>Comments</b>			

---

<b>System</b>	Cambrian		
<b>Series</b>			
<b>Group</b>			
<b>Formation</b>	St. Lawrence		
<b>Member</b>			
<b>Submember</b>			
<b>Start Depth</b>	580.00 ft	<b>End Depth</b>	645.00 ft
<b>Contact Accuracy</b>			
<b>Penetration</b>			
<b>Primary Lithology</b>	Dolomite	<b>Percent</b>	80
<b>Secondary Lithology</b>	Shale	<b>Percent</b>	20
<b>Tertiary Lithology</b>		<b>Percent</b>	
<b>Comments</b>			

---

<b>System</b>	Cambrian		
<b>Series</b>			
<b>Group</b>	Tunnel City		
<b>Formation</b>	Lone Rock		
<b>Member</b>			
<b>Submember</b>			
<b>Start Depth</b>	645.00 ft	<b>End Depth</b>	785.00 ft
<b>Contact Accuracy</b>			
<b>Penetration</b>			
<b>Primary Lithology</b>	Dolomite	<b>Percent</b>	70
<b>Secondary Lithology</b>	Shale	<b>Percent</b>	25
<b>Tertiary Lithology</b>	Sandstone	<b>Percent</b>	5
<b>Comments</b>			

---

<b>System</b>	Cambrian		
<b>Series</b>			
<b>Group</b>	Tunnel City		
<b>Formation</b>	Wonewoc		
<b>Member</b>			
<b>Submember</b>			
<b>Start Depth</b>	785.00 ft	<b>End Depth</b>	925.00 ft
<b>Contact Accuracy</b>			
<b>Penetration</b>			
<b>Primary Lithology</b>	Sandstone	<b>Percent</b>	100
<b>Secondary Lithology</b>		<b>Percent</b>	
<b>Tertiary Lithology</b>		<b>Percent</b>	

## Comments

# Water Production Information

<b>Date</b>	06/21/2006	<b>Start Time</b>	
<b>Aquifer</b>	Bedrock		
<b>Static Water Level</b>	449.00 ft	<b>Yield</b>	150 gallons per minute
<b>Pumping Water Level</b>	485 ft	<b>Yield Method</b>	Unknown
<b>Measurement</b>	Airline	<b>Pump Test</b>	Yes
<b>Pump Method</b>	Airlifted	<b>Duration</b>	400 mins
<b>Comments</b>			

# Chip Storage Information

<b>Date</b>	12/10/2007		
<b>Storage</b>	OD4-1519>1522	<b>Bin</b>	
<b>Number of Boxes</b>	4	<b>Number of Samples</b>	183
<b>Sample Intervals</b>	5	<b>Sample Gaps</b>	120-130, 540-545, 925-929
<b>Sample Top</b>	0 ft	<b>Sample Bottom</b>	925 ft
<b>Washed Top</b>	20 ft	<b>Washed Bottom</b>	925 ft
<b>Duplicate Storage</b>			
<b>Comments</b>			

<https://www.iihr.uiowa.edu/igs/geosam/well/62044/general-information>