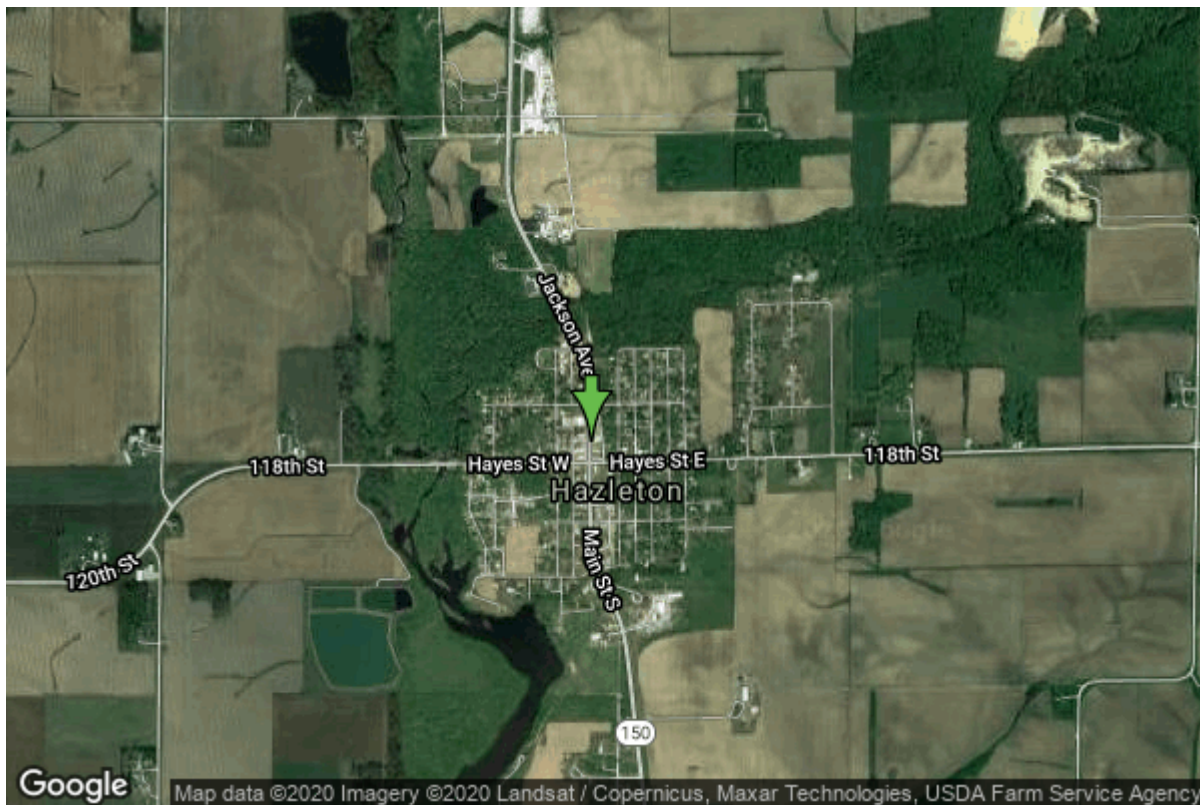


Well W#6208 Information



Date Received		State	Iowa
Owner Name	Hazleton, City Of	County	Buchanan
Alt Name	#1	Quadrangle	Hazleton, Iowa
WNumber	6208	Township	T90N
PWTS ID	0	Range	R9W
PWS ID	1031044	Section	9
Storet ID	0	Quarter	SE NE SE
SDWIS ID	2409521	Latitude	42.6181030000
USGS ID	0	Longitude	-91.9048090000
Project	Source Water Protection	Accuracy	
Operator	Unknown	UTM X	589819
		UTM Y	4718989

Site Type	Drilled hole	Drilling Company	Thorpe Well Co.
Well Status	Not Used	Drilling Date	08/14/1953
Field Located	No	Drilling Method	Unknown
Elevation	996 ft	Bedrock Depth	50 ft
Elevation Accuracy	Digital Elevation Model Accurate to 5 ft	Well Depth	65 ft
Landscape Position	Unknown	Total Depth	65 ft
		Well Types	Municipal, Public Supply
		Aquifers	Silurian

Casing Construction Information

Date	08/14/1953	Casing Type	Steel
Start Depth	0.00 ft	End Depth	50.00 ft

Diameter	12.00 in	Amount	0.00 ft
Comments			

Date	08/14/1953	Casing Type	Steel
Start Depth	0.00 ft	End Depth	52.00 ft
Diameter	8.00 in	Amount	0.00 ft
Comments			

Log Information

Date	04/08/1954
Log Types	Strip log
Prepared By	Unknown
Comments	

Date	
Log Types	Drillers log
Prepared By	Hazleton, City Of
Comments	

Stratigraphy Information

System	Quaternary		
Series	Pleistocene Series		
Group	Wisconsinan Episode		
Formation			
Member			
Submember			
Start Depth	0.00 ft	End Depth	50.00 ft
Contact Accuracy			
Penetration			
Primary Lithology	Sand And Gravel	Percent	100
Secondary Lithology		Percent	
Tertiary Lithology		Percent	
Comments			

System	Silurian		
Series			
Group			
Formation			
Member			
Submember			
Start Depth	50.00 ft	End Depth	65.00 ft
Contact Accuracy			
Penetration			
Primary Lithology	Dolomite	Percent	100
Secondary Lithology		Percent	

Tertiary Lithology
Comments

Percent

Water Production Information

Date	08/14/1953	Start Time	
Aquifer	Unknown	Yield	60 gallons per minute
Static Water Level	17.00 ft	Yield Method	Unknown
Pumping Water Level	48 ft	Pump Test	Yes
Measurement	Unknown	Duration	0 mins
Pump Method	Unknown		
Comments			

Chip Storage Information

Date	11/03/1953	Bin	
Storage	EC5-2	Number of Samples	13
Number of Boxes	1	Sample Gaps	
Sample Intervals	5	Sample Bottom	65 ft
Sample Top	0 ft	Washed Bottom	65 ft
Washed Top	50 ft		
Duplicate Storage			
Comments			

<https://www.iihr.uiowa.edu/igs/geosam/well/6208/general-information>