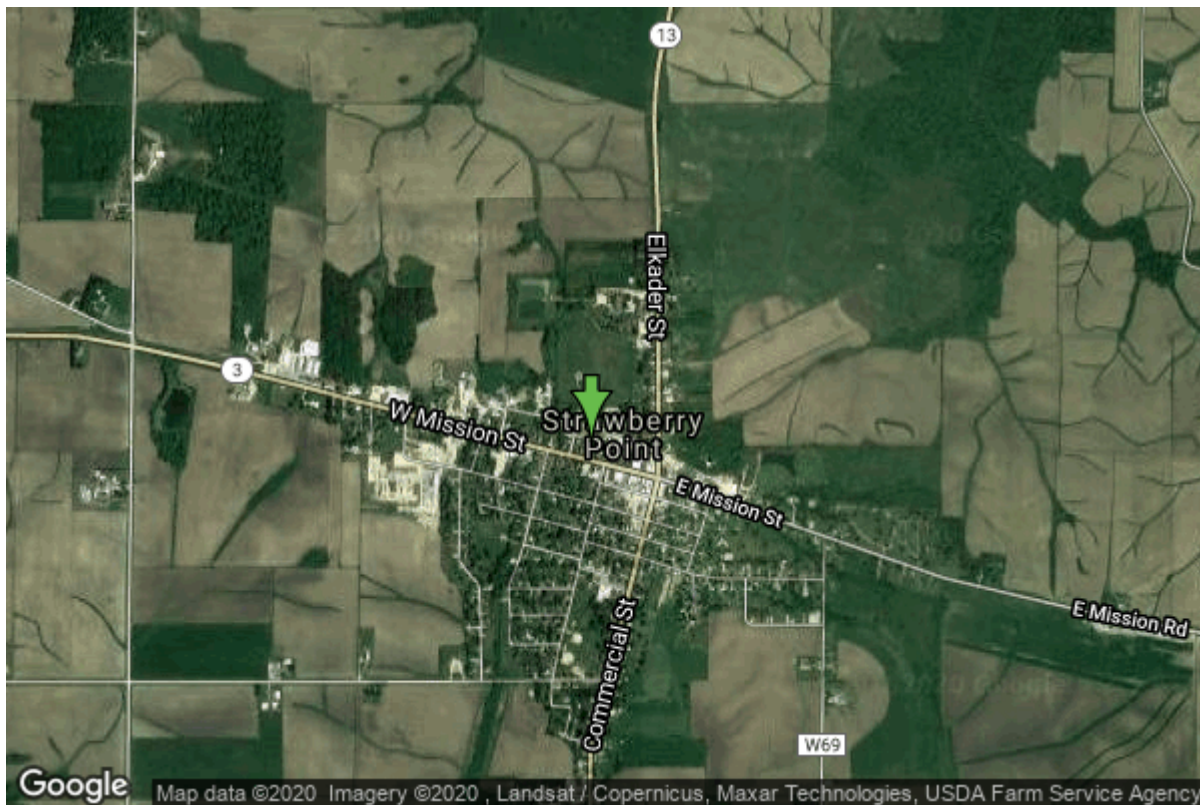


Well W#622 Information



Date Received		State	Iowa
Owner Name	Strawberry Point, City Of	County	Clayton
Alt Name	NEW EAST	Quadrangle	Strawberry Point, Iowa
WNumber	622	Township	T91N
PWTS ID	0	Range	R6W
PWS ID	2279003	Section	22
Storet ID	0	Quarter	NE NW SW
SDWIS ID	2408883	Latitude	42.6846000000
USGS ID	424057091320001	Longitude	-91.5364500000
Project	Source Water Protection	Accuracy	
Operator	Unknown	UTM X	619901
		UTM Y	4726829
<hr/>			
Site Type	Drilled hole	Drilling Company	Unknown
Well Status	Not Used	Drilling Date	01/01/1936
Field Located	No	Drilling Method	Unknown
Elevation	1213 ft	Bedrock Depth	0 ft
Elevation Accuracy	Digital Elevation Model	Well Depth	492 ft
	Accurate to 5 ft	Total Depth	492 ft
Landscape Position	Unknown	Well Types	Municipal, Public Supply
		Aquifers	Ordovician (abv St. Peter), Silurian

Casing Construction Information

Date	01/15/1936	Casing Type	Steel
Start Depth	0.00 ft	End Depth	124.00 ft
Diameter	16.00 in	Amount	124.00 ft
Comments			

Date	01/15/1936	Casing Type	Steel
Start Depth	123.50 ft	End Depth	155.50 ft
Diameter	12.00 in	Amount	32.00 ft
Comments			

Date	01/15/1936	Casing Type	Steel
Start Depth	223.50 ft	End Depth	364.50 ft
Diameter	10.00 in	Amount	141.00 ft
Comments			

Log Information

Date	
Log Types	Drillers log
Prepared By	Strawberry Point, City Of
Comments	

Date	
Log Types	Strip log
Prepared By	Unknown
Comments	

Stratigraphy Information

System	Unknown		
Series			
Group			
Formation			
Member			
Submember			
Start Depth	0.00 ft	End Depth	128.00 ft
Contact Accuracy			
Penetration			
Primary Lithology		Percent	
Secondary Lithology		Percent	
Tertiary Lithology		Percent	
Comments			

System	Silurian
---------------	----------

Series
Group
Formation Blanding
Member
Submember
Start Depth 128.00 ft **End Depth** 235.00 ft
Contact Accuracy
Penetration
Primary Lithology Dolomite **Percent** 0
Secondary Lithology Chert/Chalcedony **Percent** 0
Tertiary Lithology **Percent**
Comments

System Silurian
Series
Group
Formation Tete Des Morts/Mosalem Undiff.
Member
Submember
Start Depth 235.00 ft **End Depth** 250.00 ft
Contact Accuracy
Penetration
Primary Lithology Dolomite **Percent** 100
Secondary Lithology **Percent**
Tertiary Lithology **Percent**
Comments

System Ordovician
Series
Group
Formation Maquoketa
Member
Submember
Start Depth 250.00 ft **End Depth** 465.00 ft
Contact Accuracy
Penetration
Primary Lithology Shale **Percent** 0
Secondary Lithology Dolomite **Percent** 0
Tertiary Lithology **Percent**
Comments

System Unknown
Series
Group
Formation
Member
Submember
Start Depth 465.00 ft **End Depth** 492.00 ft
Contact Accuracy

Penetration			
Primary Lithology	Dolomite	Percent	100
Secondary Lithology		Percent	
Tertiary Lithology		Percent	
Comments			

Water Production Information

Date	01/15/1936	Start Time	
Aquifer	Unknown		
Static Water Level	130.00 ft	Yield	400 gallons per minute
Pumping Water Level	157 ft	Yield Method	Unknown
Measurement	Unknown	Pump Test	Yes
Pump Method	Unknown	Duration	0 mins
Comments			

Chip Storage Information

Date			
Storage	WD8-4	Bin	
Number of Boxes	1	Number of Samples	24
Sample Intervals	0	Sample Gaps	0-128, 250-492
Sample Top	128 ft	Sample Bottom	250 ft
Washed Top	0 ft	Washed Bottom	0 ft
Duplicate Storage			
Comments			

<https://www.iihr.uiowa.edu/igs/geosam/well/622/general-information>