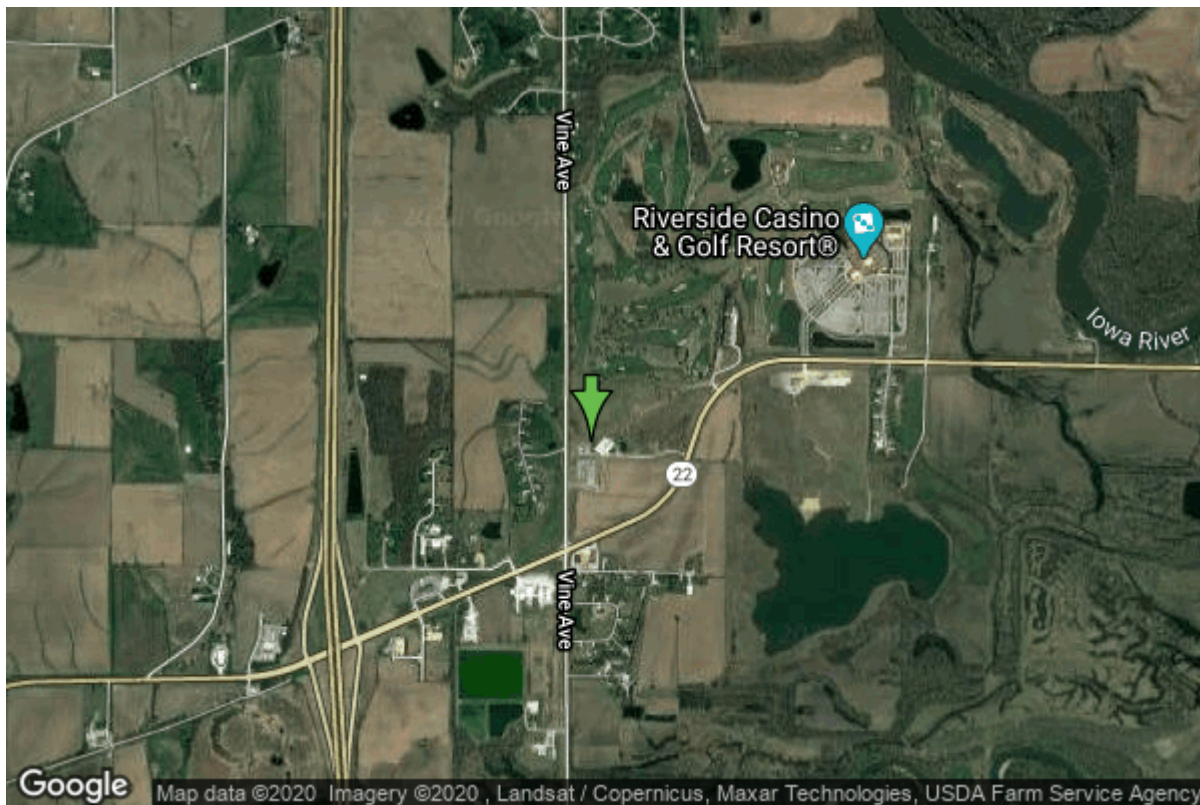


Well W#62255 Information



Date Received	08/31/2006	State	Iowa
Owner Name	Riverside, City Of	County	Washington
Alt Name	#7	Quadrangle	Riverside, Iowa
WNumber	62255	Township	T77N
PWTS ID	0	Range	R6W
PWS ID	9260090	Section	10
Storet ID	0	Quarter	NW NW SW
SDWIS ID	2585852	Latitude	41.4937460000
USGS ID	0	Longitude	-91.5396750000
Project	Source Water Protection	Accuracy	
Operator	Unknown	UTM X	621896
		UTM Y	4594599

Site Type	Drilled hole	Drilling Company	Cahoy Inc.
Well Status	Active	Drilling Date	04/22/2006
Field Located	No	Drilling Method	Rotary
Elevation	649 ft	Bedrock Depth	0 ft
Elevation Accuracy	Digital Elevation Model Accurate to 5 ft	Well Depth	179 ft
Landscape Position	Level Surface	Total Depth	179 ft
		Well Types	Municipal, Public Supply
		Aquifers	Pleistocene

Hole Construction Information

Date	09/07/2006	Depth	184.00 ft
Diameter	32.00 in		

Comments

Casing Construction Information

Date	09/07/2006	Casing Type	PVC
Start Depth	-1.00 ft	End Depth	119.00 ft
Diameter	16.00 in	Amount	120.00 ft
Comments			

Screen Construction Information

Date	09/07/2006	Slot Size	0.06
Screen Type	PVC	End Depth	179.00 ft
Start Depth	119.00 ft	Amount	60 ft
Diameter	16.00 in		
Comments			

Grout Construction Information

Date	09/07/2006	Grout Placement	Unknown
Grout Type	Cement	End Depth	75.00 ft
Start Depth	8.00 ft		
Comments			

Date	09/07/2006	Grout Placement	Unknown
Grout Type	Bentonite (Clay)	End Depth	80.00 ft
Start Depth	75.00 ft		
Comments			

Gravel Pack Construction Information

Date	09/07/2006	Slot Size	
Gravel Pack Type	Unknown	End Depth	180.00 ft
Start Depth	80.00 ft		
Comments			

Pump Construction Information

Date	09/07/2006	Pump Type	Submersible
Diameter	11.00 in	Rating	800
Depth Intake	90.00 ft		
Comments			

Log Information

Date
Log Types Drillers log
Prepared By Unknown
Comments

Water Production Information

Date	05/06/2006	Start Time	24:00
Aquifer	Alluvium		
Static Water Level	45.00 ft	Yield	1011 gallons per minute
Pumping Water Level	68 ft	Yield Method	Orifice
Measurement	Tape	Pump Test	Yes
Pump Method	Airlifted	Duration	4800 mins
Comments			

Chip Storage Information

Date	12/30/2008		
Storage	OD5-120>121	Bin	
Number of Boxes	0	Number of Samples	0
Sample Intervals	0	Sample Gaps	
Sample Top	0 ft	Sample Bottom	0 ft
Washed Top	0 ft	Washed Bottom	0 ft
Duplicate Storage			
Comments			

<https://www.iuhr.uiowa.edu/igs/geosam/well/62255/general-information>