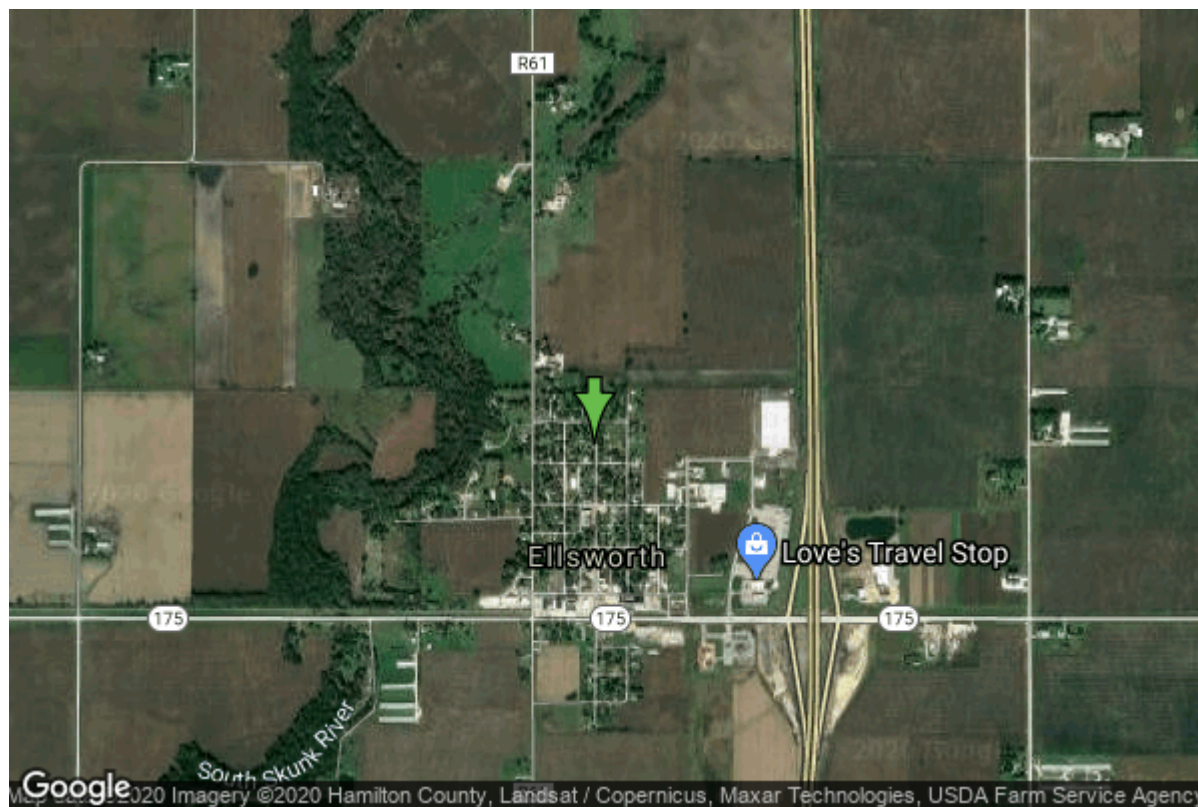


# Well W#6237 Information



|                      |                         |                   |                 |
|----------------------|-------------------------|-------------------|-----------------|
| <b>Date Received</b> |                         | <b>State</b>      | Iowa            |
| <b>Owner Name</b>    | Ellsworth, City Of      | <b>County</b>     | Hamilton        |
| <b>Alt Name</b>      | #4                      | <b>Quadrangle</b> | Ellsworth, Iowa |
| <b>WNumber</b>       | 6237                    | <b>Township</b>   | T87N            |
| <b>PWTS ID</b>       | 0                       | <b>Range</b>      | R23W            |
| <b>PWS ID</b>        | 4009016                 | <b>Section</b>    | 30              |
| <b>Storet ID</b>     | 31400002                | <b>Quarter</b>    | SW NW NE        |
| <b>SDWIS ID</b>      | 2411650                 | <b>Latitude</b>   | 42.3160200000   |
| <b>USGS ID</b>       | 421902093344702         | <b>Longitude</b>  | -93.5781800000  |
| <b>Project</b>       | Source Water Protection | <b>Accuracy</b>   |                 |
| <b>Operator</b>      | Unknown                 | <b>UTM X</b>      | 452354          |
|                      |                         | <b>UTM Y</b>      | 4685026         |

|                           |   |                         |                          |
|---------------------------|---|-------------------------|--------------------------|
| <b>Site Type</b>          | Drilled hole                                | <b>Drilling Company</b> | Layne Western - Ia.      |
| <b>Well Status</b>        | Active                                      | <b>Drilling Date</b>    | 09/30/1953               |
| <b>Field Located</b>      | No  | <b>Drilling Method</b>  | Unknown                  |
| <b>Elevation</b>          | 1087 ft                                     | <b>Bedrock Depth</b>    | 0 ft                     |
| <b>Elevation Accuracy</b> | Digital Elevation Model<br>Accurate to 5 ft | <b>Well Depth</b>       | 365 ft                   |
| <b>Landscape Position</b> | Unknown                                     | <b>Total Depth</b>      | 365 ft                   |
|                           |   | <b>Well Types</b>       | Municipal, Public Supply |
|                           |   | <b>Aquifers</b>         | Mississippian            |

## Log Information

|                  |            |
|------------------|------------|
| <b>Date</b>      | 02/23/1954 |
| <b>Log Types</b> | Strip log  |

**Prepared By** Unknown  
**Comments**

---

**Date**  
**Log Types** Drillers log  
**Prepared By** Ellsworth, City Of  
**Comments**

## Stratigraphy Information

**System** Quaternary  
**Series**  
**Group**  
**Formation**  
**Member**  
**Submember**  
**Start Depth** 0.00 ft **End Depth** 4.00 ft  
**Contact Accuracy**  
**Penetration**  
**Primary Lithology** Soil Or Fill **Percent** 100  
**Secondary Lithology** **Percent**  
**Tertiary Lithology** **Percent**  
**Comments**

---

**System** Quaternary  
**Series** Pleistocene Series  
**Group**  
**Formation**  
**Member**  
**Submember**  
**Start Depth** 4.00 ft **End Depth** 115.00 ft  
**Contact Accuracy**  
**Penetration**  
**Primary Lithology** Till **Percent** 100  
**Secondary Lithology** **Percent**  
**Tertiary Lithology** **Percent**  
**Comments**

---

**System** Mississippian (Subsystem Of Carboniferous System)  
**Series**  
**Group**  
**Formation** St. Louis  
**Member**  
**Submember**  
**Start Depth** 115.00 ft **End Depth** 127.00 ft  
**Contact Accuracy**  
**Penetration**  
**Primary Lithology** Limestone **Percent** 0

|                            |      |                |   |
|----------------------------|------|----------------|---|
| <b>Secondary Lithology</b> | Sand | <b>Percent</b> | 0 |
| <b>Tertiary Lithology</b>  |      | <b>Percent</b> |   |
| <b>Comments</b>            |      |                |   |

---

|                            |   |                  |           |
|----------------------------|---|------------------|-----------|
| <b>System</b>              | Mississippian (Subsystem Of Carboniferous System) |                  |           |
| <b>Series</b>              |   |                  |           |
| <b>Group</b>               | Augusta   |                  |           |
| <b>Formation</b>           | Burlington  |                  |           |
| <b>Member</b>              |   |                  |           |
| <b>Submember</b>           |   |                  |           |
| <b>Start Depth</b>         | 127.00 ft   | <b>End Depth</b> | 140.00 ft |
| <b>Contact Accuracy</b>    |   |                  |           |
| <b>Penetration</b>         |   |                  |           |
| <b>Primary Lithology</b>   | Dolomite  | <b>Percent</b>   | 0         |
| <b>Secondary Lithology</b> | Limestone   | <b>Percent</b>   | 0         |
| <b>Tertiary Lithology</b>  | Chert/Chalcedony                                  | <b>Percent</b>   | 0         |
| <b>Comments</b>            |   |                  |           |

---

|                            |           |                  |           |
|----------------------------|-----------|------------------|-----------|
| <b>System</b>              | Unknown   |                  |           |
| <b>Series</b>              |           |                  |           |
| <b>Group</b>               |           |                  |           |
| <b>Formation</b>           |           |                  |           |
| <b>Member</b>              |           |                  |           |
| <b>Submember</b>           |           |                  |           |
| <b>Start Depth</b>         | 140.00 ft | <b>End Depth</b> | 220.00 ft |
| <b>Contact Accuracy</b>    |           |                  |           |
| <b>Penetration</b>         |           |                  |           |
| <b>Primary Lithology</b>   | Limestone | <b>Percent</b>   | 100       |
| <b>Secondary Lithology</b> |           | <b>Percent</b>   |           |
| <b>Tertiary Lithology</b>  |           | <b>Percent</b>   |           |
| <b>Comments</b>            |           |                  |           |

---

|                            |   |                  |           |
|----------------------------|---|------------------|-----------|
| <b>System</b>              | Mississippian (Subsystem Of Carboniferous System) |                  |           |
| <b>Series</b>              |   |                  |           |
| <b>Group</b>               | Sub-Augusta                                       |                  |           |
| <b>Formation</b>           | Gilmore City                                      |                  |           |
| <b>Member</b>              | Iowa Falls Dolomite                               |                  |           |
| <b>Submember</b>           |   |                  |           |
| <b>Start Depth</b>         | 220.00 ft   | <b>End Depth</b> | 280.00 ft |
| <b>Contact Accuracy</b>    |   |                  |           |
| <b>Penetration</b>         |   |                  |           |
| <b>Primary Lithology</b>   | Dolomite  | <b>Percent</b>   | 100       |
| <b>Secondary Lithology</b> |   | <b>Percent</b>   |           |
| <b>Tertiary Lithology</b>  |   | <b>Percent</b>   |           |
| <b>Comments</b>            |   |                  |           |

---

|               |   |  |  |
|---------------|---|--|--|
| <b>System</b> | Mississippian (Subsystem Of Carboniferous System) |  |  |
| <b>Series</b> |   |  |  |
| <b>Group</b>  | Sub-Augusta                                       |  |  |

|                            |              |                  |           |
|----------------------------|--------------|------------------|-----------|
| <b>Formation</b>           | Maynes Creek |                  |           |
| <b>Member</b>              | Eagle City   |                  |           |
| <b>Submember</b>           |              |                  |           |
| <b>Start Depth</b>         | 280.00 ft    | <b>End Depth</b> | 335.00 ft |
| <b>Contact Accuracy</b>    |              |                  |           |
| <b>Penetration</b>         |              |                  |           |
| <b>Primary Lithology</b>   | Limestone    | <b>Percent</b>   | 0         |
| <b>Secondary Lithology</b> | Dolomite     | <b>Percent</b>   | 0         |
| <b>Tertiary Lithology</b>  |              | <b>Percent</b>   |           |
| <b>Comments</b>            |              |                  |           |

---

|                            |   |                  |           |
|----------------------------|---|------------------|-----------|
| <b>System</b>              | Mississippian (Subsystem Of Carboniferous System) |                  |           |
| <b>Series</b>              |   |                  |           |
| <b>Group</b>               | Sub-Augusta                                       |                  |           |
| <b>Formation</b>           | Maynes Creek                                      |                  |           |
| <b>Member</b>              |   |                  |           |
| <b>Submember</b>           |   |                  |           |
| <b>Start Depth</b>         | 335.00 ft   | <b>End Depth</b> | 365.00 ft |
| <b>Contact Accuracy</b>    |   |                  |           |
| <b>Penetration</b>         |   |                  |           |
| <b>Primary Lithology</b>   | Dolomite  | <b>Percent</b>   | 0         |
| <b>Secondary Lithology</b> | Limestone   | <b>Percent</b>   | 0         |
| <b>Tertiary Lithology</b>  | Chert/Chalcedony                                  | <b>Percent</b>   | 0         |
| <b>Comments</b>            |   |                  |           |

## Water Production Information

|                            |            |                     |                        |
|----------------------------|------------|---------------------|------------------------|
| <b>Date</b>                | 09/30/1953 | <b>Start Time</b>   |                        |
| <b>Aquifer</b>             | Unknown    |                     |                        |
| <b>Static Water Level</b>  | 0.00 ft    | <b>Yield</b>        | 200 gallons per minute |
| <b>Pumping Water Level</b> | 0 ft       | <b>Yield Method</b> | Unknown                |
| <b>Measurement</b>         | Unknown    | <b>Pump Test</b>    | No                     |
| <b>Pump Method</b>         | Unknown    | <b>Duration</b>     | 0 mins                 |
| <b>Comments</b>            |            |                     |                        |

## Chip Storage Information

|                          |            |                          |         |
|--------------------------|------------|--------------------------|---------|
| <b>Date</b>              | 11/17/1953 |                          |         |
| <b>Storage</b>           | EC6-2      | <b>Bin</b>               |         |
| <b>Number of Boxes</b>   | 1          | <b>Number of Samples</b> | 74      |
| <b>Sample Intervals</b>  | 5          | <b>Sample Gaps</b>       | 300-305 |
| <b>Sample Top</b>        | 0 ft       | <b>Sample Bottom</b>     | 365 ft  |
| <b>Washed Top</b>        | 120 ft     | <b>Washed Bottom</b>     | 365 ft  |
| <b>Duplicate Storage</b> |            |                          |         |
| <b>Comments</b>          |            |                          |         |