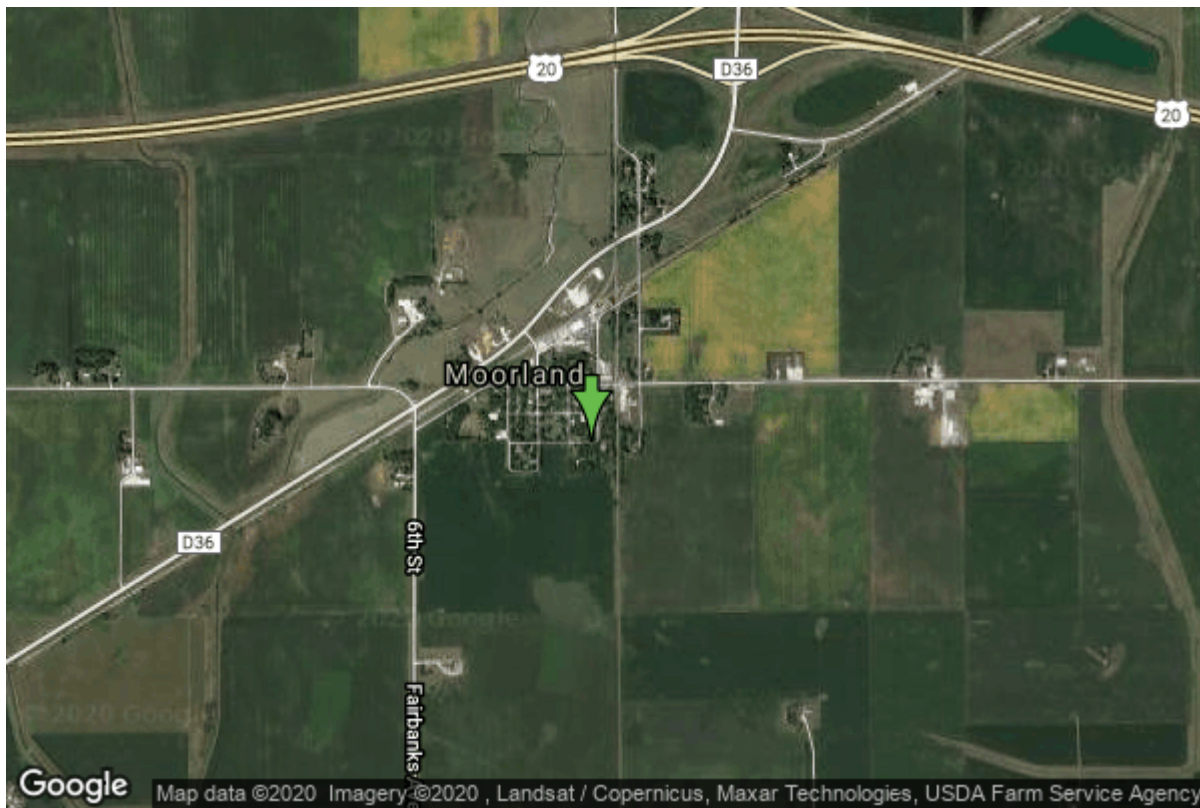


Well W#62830 Information



Date Received	12/27/2006	State	Iowa
Owner Name	Moorland, City Of	County	Webster
Alt Name	#3	Quadrangle	Moorland, Iowa
WNumber	62830	Township	T88N
PWTS ID	0	Range	R30W
PWS ID	9461007	Section	13
Storet ID	0	Quarter	NW NE SE
SDWIS ID	2585952	Latitude	42.4397630000
USGS ID	0	Longitude	-94.2921220000
Project	Source Water Protection	Accuracy	
Operator	Unknown	UTM X	393729
		UTM Y	4699413

Site Type	Drilled hole	Drilling Company	Layne Western - Ia.
Well Status	Active	Drilling Date	12/12/2004
Field Located	No	Drilling Method	Rotary
Elevation	1159 ft	Bedrock Depth	168 ft
Elevation Accuracy	Digital Elevation Model Accurate to 5 ft	Well Depth	425 ft
Landscape Position	Level Surface	Total Depth	425 ft
		Well Types	Municipal, Public Supply
		Aquifers	Mississippian

Hole Construction Information

Date	01/05/2007	Depth	267.00 ft
Diameter	14.00 in		

Comments

Date	01/05/2007	Depth	425.00 ft
Diameter	9.75 in		
Comments			

Casing Construction Information

Date	01/05/2007	Casing Type	PVC
Start Depth	0.00 ft	End Depth	267.00 ft
Diameter	10.75 in	Amount	267.00 ft
Comments			

Date	01/05/2007	Casing Type	PVC
Start Depth	0.00 ft	End Depth	295.00 ft
Diameter	8.63 in	Amount	295.00 ft
Comments			

Grout Construction Information

Date	01/05/2007	Grout Placement	Unknown
Grout Type	Cement	End Depth	267.00 ft
Start Depth	0.00 ft		
Comments			

Pump Construction Information

Date	01/05/2007	Pump Type	Submersible
Diameter	6.00 in	Rating	75
Depth Intake	390.00 ft		
Comments			

Log Information

Date	
Log Types	Drillers log
Prepared By	Unknown
Comments	

Water Production Information

Date	01/06/2005	Start Time	
Aquifer	Mississippian	Yield	143 gallons per minute
Static Water Level	204.00 ft		

Pumping Water Level	272 ft	Yield Method	Orifice
Measurement	Electric Line	Pump Test	Yes
Pump Method	Pumped	Duration	540 mins
Comments			

<https://www.iihr.uiowa.edu/igs/geosam/well/62830/general-information>