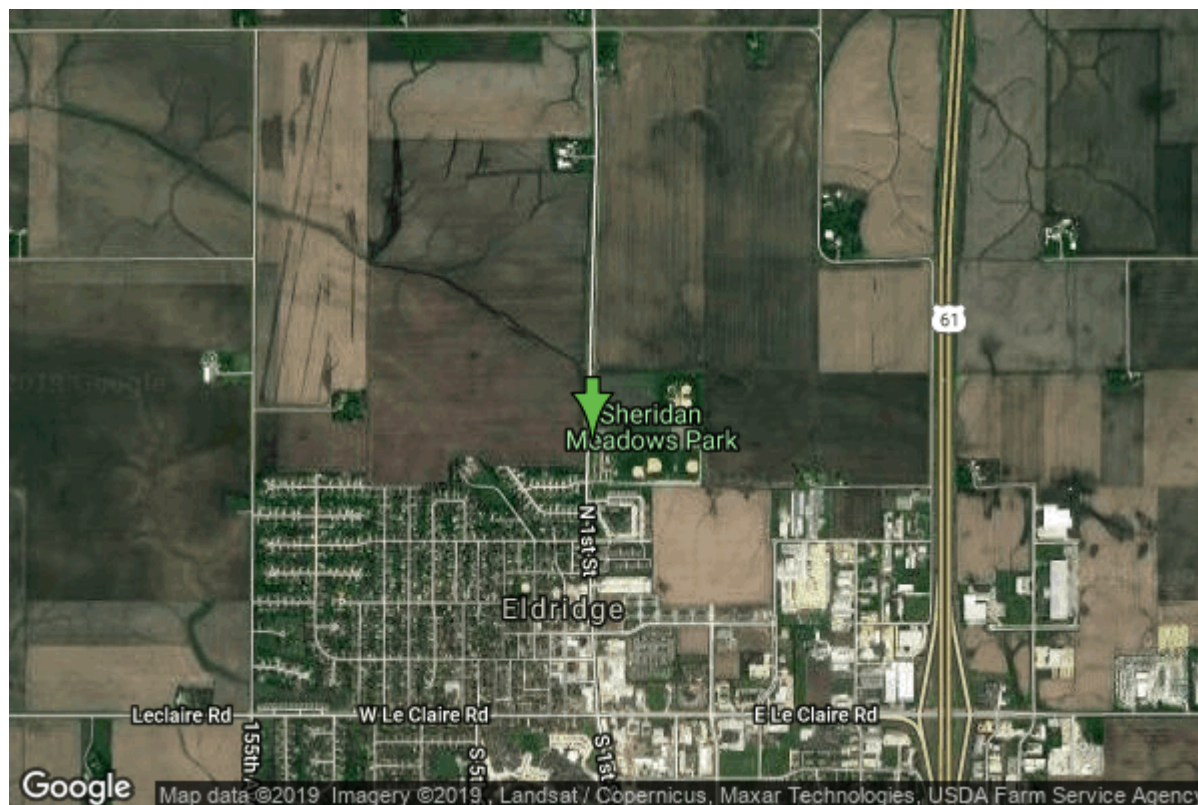


# Well W#63128 Information



<b>Date Received</b>	04/05/2007	<b>State</b>	Iowa
<b>Owner Name</b>	Eldridge, City Of	<b>County</b>	Scott
<b>Alt Name</b>	#5	<b>Quadrangle</b>	Eldridge, Iowa
<b>WNumber</b>	63128	<b>Township</b>	T79N
<b>PWTS ID</b>	0	<b>Range</b>	R3E
<b>PWS ID</b>	8230008	<b>Section</b>	11
<b>Storet ID</b>	0	<b>Quarter</b>	NW SE SW
<b>SDWIS ID</b>	2586044	<b>Latitude</b>	41.6633650000
<b>USGS ID</b>	0	<b>Longitude</b>	-90.5825630000
<b>Project</b>	Source Water Protection	<b>Accuracy</b>	
<b>Operator</b>	Unknown	<b>UTM X</b>	701265
		<b>UTM Y</b>	4615225

<b>Site Type</b>	Drilled hole	<b>Drilling Company</b>	Northway Corporation
<b>Well Status</b>	Active	<b>Drilling Date</b>	11/19/2006
<b>Field Located</b>	No	<b>Drilling Method</b>	Rotary
<b>Elevation</b>	777 ft	<b>Bedrock Depth</b>	60 ft
<b>Elevation Accuracy</b>	Digital Elevation Model Accurate to 5 ft	<b>Well Depth</b>	482 ft
<b>Landscape Position</b>	Level Surface	<b>Total Depth</b>	483 ft
		<b>Well Types</b>	Municipal, Public Supply
		<b>Aquifers</b>	Silurian

## Hole Construction Information

<b>Date</b>	11/19/2006	<b>Depth</b>	201.00 ft
<b>Diameter</b>	22.00 in		

## Comments

---

Date	11/19/2006	Depth	482.00 ft
Diameter	15.00 in		
Comments			

## Casing Construction Information

Date	11/19/2006	Casing Type	Unknown
Start Depth	-2.00 ft	End Depth	63.00 ft
Diameter	22.00 in	Amount	65.00 ft
Comments			

---

Date	11/19/2006	Casing Type	Unknown
Start Depth	-2.00 ft	End Depth	200.00 ft
Diameter	16.00 in	Amount	202.00 ft
Comments			

## Grout Construction Information

Date	11/19/2006	Grout Placement	Unknown
Grout Type	Cement	End Depth	200.00 ft
Start Depth	0.00 ft		
Comments			

## Pump Construction Information

Date	11/19/2006	Pump Type	Turbine
Diameter	10.00 in	Rating	675
Depth Intake	205.00 ft		
Comments			

## Log Information

Date	
Log Types	Drillers log
Prepared By	Unknown
Comments	

## Water Production Information

Date	11/18/2006	Start Time	
Aquifer	Unknown	Yield	600 gallons per minute
Static Water Level	75.00 ft		

<b>Pumping Water Level</b>	95 ft	<b>Yield Method</b>	Unknown
<b>Measurement</b>	Unknown	<b>Pump Test</b>	Yes
<b>Pump Method</b>	Unknown	<b>Duration</b>	0 mins
<b>Comments</b>	Formal pump test on file		

## Chip Storage Information

<b>Date</b>	12/10/2007	<b>Bin</b>	
<b>Storage</b>	OD4-1518>1519	<b>Number of Samples</b>	96
<b>Number of Boxes</b>	2	<b>Sample Gaps</b>	345-350
<b>Sample Intervals</b>	5	<b>Sample Bottom</b>	483 ft
<b>Sample Top</b>	0 ft	<b>Washed Bottom</b>	483 ft
<b>Washed Top</b>	60 ft		
<b>Duplicate Storage</b>			
<b>Comments</b>			

<https://www.ihr.uiowa.edu/igs/geosam/well/63128/general-information>