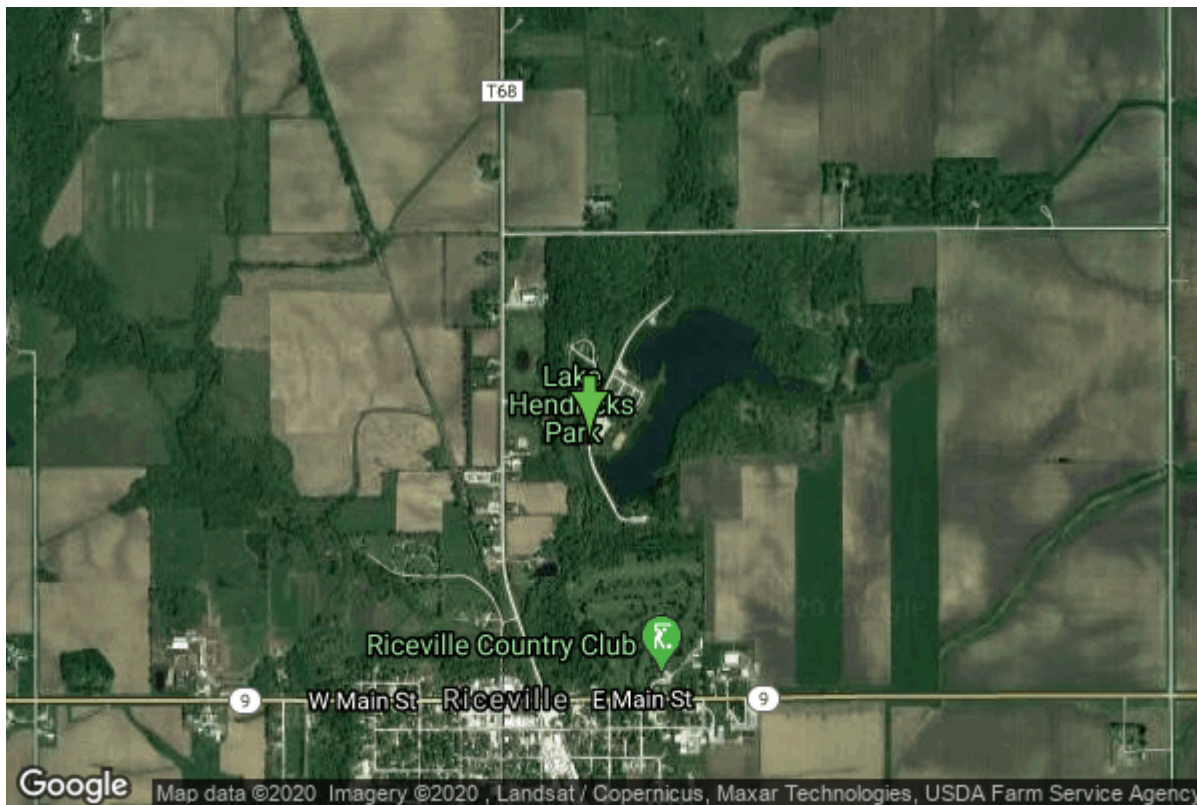


Well W#63717 Information



Date Received	04/25/2007	State	Iowa
Owner Name	Howard County Conservation	County	Howard
Alt Name	Chapman, Harold	Quadrangle	Riceville, Iowa
WNumber	63717	Township	T99N
PWTS ID	0	Range	R14W
PWS ID	4515957	Section	19
Storet ID	0	Quarter	SW SW SE
SDWIS ID	2586454	Latitude	43.3718780000
USGS ID	0	Longitude	-92.5497240000
Project	Source Water Protection	Accuracy	
Operator	Unknown	UTM X	536479
		UTM Y	4802211

Site Type	Drilled hole	Drilling Company	Shawver Well Co.
Well Status	Active	Drilling Date	02/22/2007
Field Located	No	Drilling Method	Unknown
Elevation	1220 ft	Bedrock Depth	253 ft
Elevation Accuracy	Topo Map Accurate to 2 ft	Well Depth	290 ft
Landscape Position	Unknown	Total Depth	295 ft
		Well Types	Public Supply
		Aquifers	Devonian

Hole Construction Information

Date	02/22/2007	Depth	20.00 ft
Diameter	12.25 in		

Comments

Date	02/22/2007	Depth	281.00 ft
Diameter	9.88 in		
Comments			

Date	02/22/2007	Depth	300.00 ft
Diameter	6.25 in		
Comments			

Casing Construction Information

Date	02/22/2007	Casing Type	Steel
Start Depth	-3.00 ft	End Depth	281.00 ft
Diameter	7.00 in	Amount	0.00 ft
Comments			

Grout Construction Information

Date	02/22/2007	Grout Placement	Unknown
Grout Type	Neat Cement	End Depth	281.00 ft
Start Depth	0.00 ft		
Comments			

Log Information

Date	11/20/2015
Log Types	Strip log
Prepared By	Kerr, Phil
Comments	

Date	11/20/2015
Log Types	Strip log
Prepared By	Kerr, Phil
Comments	

Date	11/23/2006
Log Types	Drillers log
Prepared By	Shawver Well Co.
Comments	

Stratigraphy Information

System	Quaternary
Series	

Group			
Formation			
Member			
Submember			
Start Depth	0.00 ft	End Depth	253.00 ft
Contact Accuracy			
Penetration			
Primary Lithology	Till	Percent	90
Secondary Lithology	Silt	Percent	8
Tertiary Lithology	Soil Or Fill	Percent	2
Comments			

System	Devonian		
Series			
Group	Wapsipinicon		
Formation	Pinicon Ridge		
Member			
Submember			
Start Depth	253.00 ft	End Depth	280.00 ft
Contact Accuracy			
Penetration			
Primary Lithology	Shale	Percent	55
Secondary Lithology	Limestone	Percent	45
Tertiary Lithology		Percent	
Comments			

System	Devonian		
Series			
Group	Wapsipinicon		
Formation	Spillville		
Member			
Submember			
Start Depth	280.00 ft	End Depth	295.00 ft
Contact Accuracy			
Penetration			
Primary Lithology	Dolomite	Percent	100
Secondary Lithology		Percent	
Tertiary Lithology		Percent	
Comments			

Water Production Information

Date	02/22/2007	Start Time	
Aquifer	Unknown		
Static Water Level	9.00 ft	Yield	35 gallons per minute
Pumping Water Level	115 ft	Yield Method	Unknown
Measurement	Unknown	Pump Test	Yes
Pump Method	Airlifted	Duration	0 mins

Comments

Chip Storage Information

Date	04/07/2008	Bin	
Storage	OD4-1607>1608	Number of Samples	60
Number of Boxes	2	Sample Gaps	
Sample Intervals	5	Sample Bottom	300 ft
Sample Top	0 ft	Washed Bottom	300 ft
Washed Top	280 ft		
Duplicate Storage			
Comments			

<https://www.iihr.uiowa.edu/igs/geosam/well/63717/general-information>