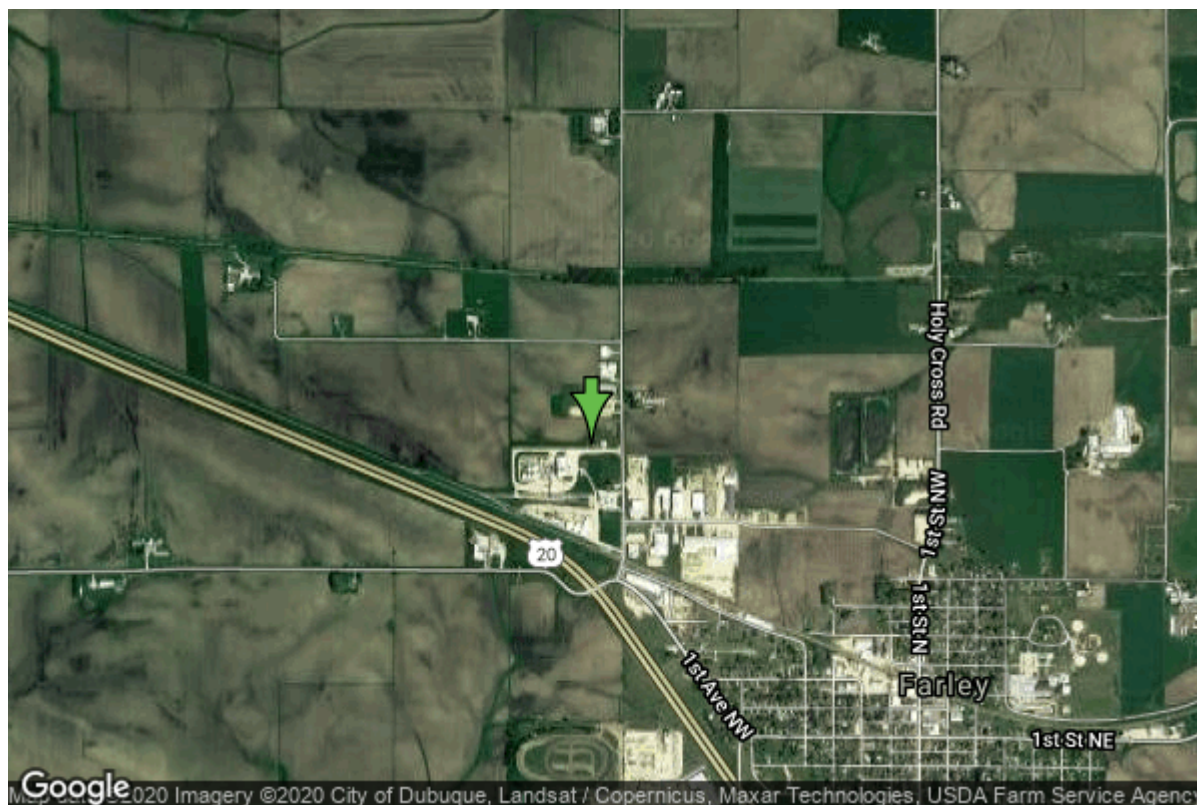


Well W#63719 Information



Date Received	04/25/2007	State	Iowa
Owner Name	Farley, City Of	County	Dubuque
Alt Name	#4	Quadrangle	Dyersville East, Iowa
WNumber	63719	Township	T88N
PWTS ID	0	Range	R2W
PWS ID	3135018	Section	12
Storet ID	0	Quarter	NE NW SE
SDWIS ID	2586391	Latitude	42.4520360000
USGS ID	0	Longitude	-91.0195010000
Project	Source Water Protection	Accuracy	
Operator	Unknown	UTM X	662857
		UTM Y	4701867

Site Type	Drilled hole	Drilling Company	Shawver Well Co.
Well Status	Active	Drilling Date	03/15/2007
Field Located	No	Drilling Method	Unknown
Elevation	1098 ft	Bedrock Depth	96 ft
Elevation Accuracy	Digital Elevation Model Accurate to 5 ft	Well Depth	1265 ft
Landscape Position	Unknown	Total Depth	1270 ft
		Well Types	Municipal, Public Supply
		Aquifers	Cambrian-Ordovician

Hole Construction Information

Date	03/15/2007	Depth	18.00 ft
Diameter	26.00 in		

Comments

Date	03/15/2007	Depth	105.00 ft
Diameter	21.00 in		
Comments			

Date	03/15/2007	Depth	114.00 ft
Diameter	15.13 in		
Comments			

Date	03/15/2007	Depth	870.00 ft
Diameter	15.00 in		
Comments			

Date	03/15/2007	Depth	1265.00 ft
Diameter	9.88 in		
Comments			

Casing Construction Information

Date	03/15/2007	Casing Type	Steel
Start Depth	-0.50 ft	End Depth	105.00 ft
Diameter	16.00 in	Amount	0.00 ft
Comments			

Date	03/15/2007	Casing Type	Steel
Start Depth	-1.00 ft	End Depth	870.00 ft
Diameter	10.00 in	Amount	0.00 ft
Comments			

Grout Construction Information

Date	03/15/2007	Grout Placement	Unknown
Grout Type	Neat Cement	End Depth	870.00 ft
Start Depth	105.00 ft		
Comments			

Date	03/15/2007	Grout Placement	Tremie With Shoe
Grout Type	Neat Cement	End Depth	105.00 ft
Start Depth	0.00 ft		
Comments			

Log Information

Date 05/01/2007
Log Types Strip log
Prepared By Bounk, Michael Joseph
Comments

Date 03/15/2007
Log Types Drillers log
Prepared By Shawver Well Co.
Comments

Stratigraphy Information

System Quaternary
Series Pleistocene Series
Group
Formation
Member
Submember
Start Depth 0.00 ft **End Depth** 95.00 ft
Contact Accuracy
Penetration
Primary Lithology Till **Percent** 85
Secondary Lithology Sand And Gravel **Percent** 15
Tertiary Lithology **Percent**
Comments

System Silurian
Series
Group
Formation
Member
Submember
Start Depth 95.00 ft **End Depth** 220.00 ft
Contact Accuracy
Penetration
Primary Lithology Dolomite **Percent** 60
Secondary Lithology Chert/Chalcedony **Percent** 40
Tertiary Lithology **Percent**
Comments

System Ordovician
Series
Group
Formation Maquoketa
Member

Submember			
Start Depth	220.00 ft	End Depth	462.00 ft
Contact Accuracy			
Penetration			
Primary Lithology	Shale	Percent	80
Secondary Lithology	Dolomite	Percent	19
Tertiary Lithology	Siltstone	Percent	1
Comments			
<hr/>			
System	Ordovician		
Series			
Group	Galena		
Formation			
Member			
Submember			
Start Depth	462.00 ft	End Depth	570.00 ft
Contact Accuracy			
Penetration			
Primary Lithology	Dolomite	Percent	75
Secondary Lithology	Limestone	Percent	25
Tertiary Lithology		Percent	
Comments			
<hr/>			
System	Ordovician		
Series			
Group	Galena		
Formation	Dunleith		
Member			
Submember			
Start Depth	570.00 ft	End Depth	670.00 ft
Contact Accuracy			
Penetration			
Primary Lithology	Dolomite	Percent	48
Secondary Lithology	Limestone	Percent	48
Tertiary Lithology	Chert/Chalcedony	Percent	4
Comments			
<hr/>			
System	Ordovician		
Series			
Group	Galena		
Formation	Decorah/Platteville Undiff.		
Member			
Submember			
Start Depth	670.00 ft	End Depth	770.00 ft
Contact Accuracy			
Penetration			
Primary Lithology	Limestone	Percent	80
Secondary Lithology	Shale	Percent	20
Tertiary Lithology		Percent	

Comments

System Ordovician
Series
Group Ancell
Formation Glenwood
Member
Submember
Start Depth 770.00 ft **End Depth** 775.00 ft
Contact Accuracy
Penetration
Primary Lithology Shale **Percent** 80
Secondary Lithology Limestone **Percent** 20
Tertiary Lithology **Percent**
Comments

System Ordovician
Series
Group Ancell
Formation St. Peter Sandstone
Member Tonti
Submember
Start Depth 775.00 ft **End Depth** 825.00 ft
Contact Accuracy
Penetration
Primary Lithology Sandstone **Percent** 80
Secondary Lithology Shale **Percent** 18
Tertiary Lithology Dolomite **Percent** 2
Comments

System Ordovician
Series
Group Ancell
Formation St. Peter Sandstone
Member Readstown
Submember
Start Depth 825.00 ft **End Depth** 837.00 ft
Contact Accuracy
Penetration
Primary Lithology Chert/Chalcedony **Percent** 60
Secondary Lithology Dolomite **Percent** 30
Tertiary Lithology Shale **Percent** 10
Comments

System Ordovician
Series
Group Prairie Du Chien
Formation Shakopee
Member Willow River

Submember			
Start Depth	837.00 ft	End Depth	927.00 ft
Contact Accuracy			
Penetration			
Primary Lithology	Dolomite	Percent	90
Secondary Lithology	Chert/Chalcedony	Percent	8
Tertiary Lithology	Shale	Percent	2
Comments			
<hr/>			
System	Ordovician		
Series			
Group	Prairie Du Chien		
Formation	Shakopee		
Member	New Richmond		
Submember			
Start Depth	927.00 ft	End Depth	970.00 ft
Contact Accuracy			
Penetration			
Primary Lithology	Dolomite	Percent	70
Secondary Lithology	Shale	Percent	15
Tertiary Lithology	Sandstone	Percent	15
Comments			
<hr/>			
System	Ordovician		
Series			
Group	Prairie Du Chien		
Formation	Oneota		
Member			
Submember			
Start Depth	970.00 ft	End Depth	1129.00 ft
Contact Accuracy			
Penetration			
Primary Lithology	Dolomite	Percent	80
Secondary Lithology	Chert/Chalcedony	Percent	17
Tertiary Lithology	Sandstone	Percent	3
Comments			
<hr/>			
System	Cambrian		
Series			
Group			
Formation	Jordan		
Member	Coon Valley		
Submember			
Start Depth	1129.00 ft	End Depth	1137.00 ft
Contact Accuracy			
Penetration			
Primary Lithology	Dolomite	Percent	95
Secondary Lithology	Chert/Chalcedony	Percent	5
Tertiary Lithology		Percent	

Comments

System	Cambrian		
Series			
Group			
Formation	Jordan		
Member			
Submember			
Start Depth	1137.00 ft	End Depth	1232.00 ft
Contact Accuracy			
Penetration			
Primary Lithology	Sandstone	Percent	75
Secondary Lithology	Dolomite	Percent	25
Tertiary Lithology		Percent	
Comments			

System	Cambrian		
Series			
Group			
Formation	St. Lawrence		
Member			
Submember			
Start Depth	1232.00 ft	End Depth	1270.00 ft
Contact Accuracy			
Penetration			
Primary Lithology	Dolomite	Percent	98
Secondary Lithology	Sandstone	Percent	2
Tertiary Lithology		Percent	
Comments			

Water Production Information

Date	03/15/2007	Start Time	
Aquifer	Unknown		
Static Water Level	472.00 ft	Yield	500 gallons per minute
Pumping Water Level	0 ft	Yield Method	Estimate
Measurement	Unknown	Pump Test	Yes
Pump Method	Airlifted	Duration	0 mins
Comments			

Chip Storage Information

Date	04/25/2007		
Storage	OD4-1438>1442	Bin	
Number of Boxes	5	Number of Samples	253
Sample Intervals	5	Sample Gaps	145-150
Sample Top	0 ft	Sample Bottom	1270 ft

Washed Top	95 ft	Washed Bottom	1270 ft
Duplicate Storage			
Comments			

<https://www.iihr.uiowa.edu/igs/geosam/well/63719/general-information>