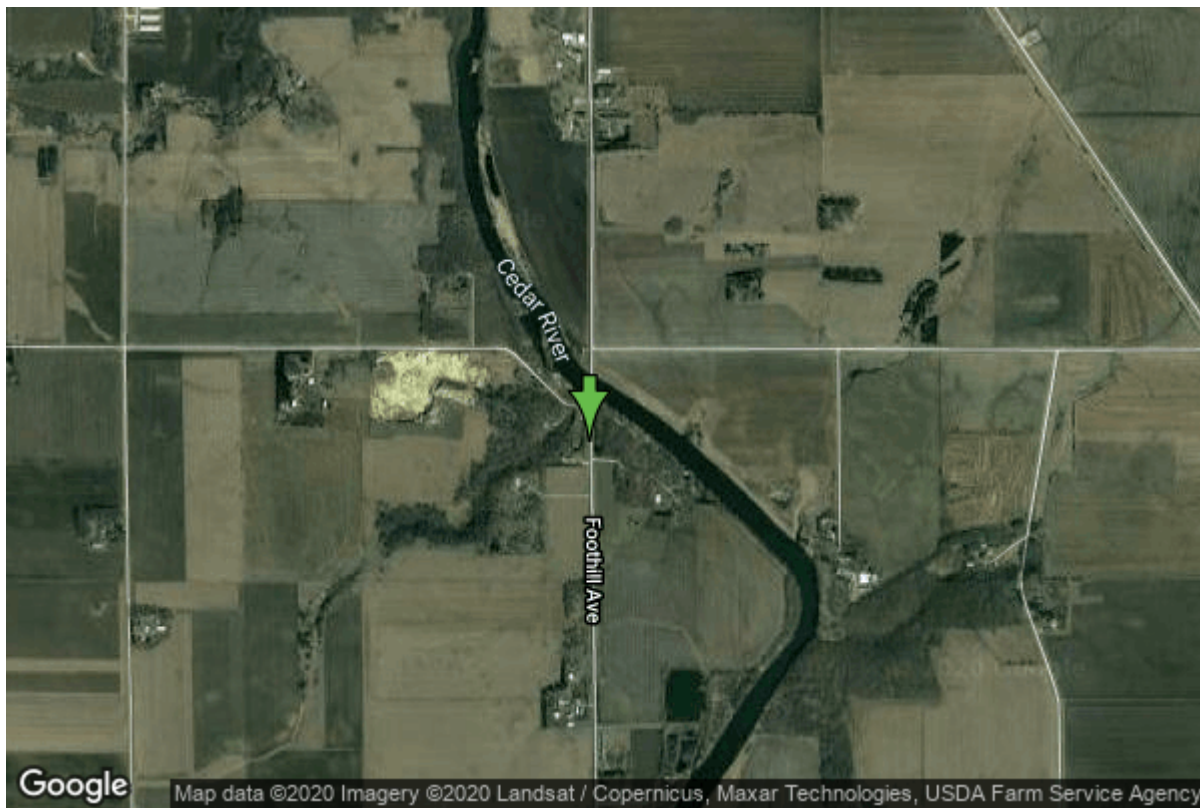


Well W#63725 Information



Date Received	04/25/2007	State	Iowa
Owner Name	Halvorson Park	County	Mitchell
Alt Name	WELL #2	Quadrangle	Osage Sw, Iowa
WNumber	63725	Township	T99N
PWTS ID	0	Range	R18W
PWS ID	6673401	Section	36
Storet ID	0	Quarter	NW NW SW
SDWIS ID	2586091	Latitude	43.3537580000
USGS ID	0	Longitude	-92.9246170000
Project	Source Water Protection	Accuracy	
Operator	Unknown	UTM X	506109
		UTM Y	4800103

Site Type	Drilled hole	Drilling Company	Shawver Well Co.
Well Status	Active	Drilling Date	01/25/2007
Field Located	No	Drilling Method	Unknown
Elevation	1129 ft	Bedrock Depth	1 ft
Elevation Accuracy	Digital Elevation Model Accurate to 5 ft	Well Depth	275 ft
Landscape Position	Valley	Total Depth	275 ft
		Well Types	Public Supply
		Aquifers	Devonian

Hole Construction Information

Date	01/25/2007	Depth	28.00 ft
Diameter	12.25 in		

Comments

Date	01/25/2007	Depth	216.00 ft
Diameter	10.00 in		
Comments			

Date	01/25/2007	Depth	275.00 ft
Diameter	6.25 in		
Comments			

Casing Construction Information

Date	01/25/2007	Casing Type	Steel
Start Depth	0.00 ft	End Depth	216.00 ft
Diameter	7.00 in	Amount	0.00 ft
Comments			

Grout Construction Information

Date	01/25/2007	Grout Placement	Unknown
Grout Type	Neat Cement	End Depth	216.00 ft
Start Depth	0.00 ft		
Comments			

Log Information

Date	08/06/2015
Log Types	Strip log
Prepared By	Hartsock, Tanner
Comments	

Date	
Log Types	Drillers log
Prepared By	Unknown
Comments	

Stratigraphy Information

System	Devonian		
Series			
Group	Cedar Valley		
Formation	Lithograph City		
Member			
Submember			
Start Depth	0.00 ft	End Depth	50.00 ft

Contact Accuracy			
Penetration			
Primary Lithology	Dolomite	Percent	70
Secondary Lithology	Limestone	Percent	30
Tertiary Lithology		Percent	
Comments			
<hr/>			
System	Devonian		
Series			
Group	Cedar Valley		
Formation	Coralville		
Member			
Submember			
Start Depth	50.00 ft	End Depth	95.00 ft
Contact Accuracy			
Penetration			
Primary Lithology	Dolomite	Percent	80
Secondary Lithology	Limestone	Percent	20
Tertiary Lithology		Percent	
Comments			
<hr/>			
System	Devonian		
Series			
Group	Cedar Valley		
Formation	Little Cedar		
Member			
Submember			
Start Depth	95.00 ft	End Depth	190.00 ft
Contact Accuracy			
Penetration			
Primary Lithology	Dolomite	Percent	80
Secondary Lithology	Limestone	Percent	15
Tertiary Lithology	Shale	Percent	5
Comments			
<hr/>			
System	Devonian		
Series			
Group	Wapsipinicon		
Formation	Pinicon Ridge		
Member			
Submember			
Start Depth	190.00 ft	End Depth	235.00 ft
Contact Accuracy			
Penetration			
Primary Lithology	Dolomite	Percent	60
Secondary Lithology	Shale	Percent	40
Tertiary Lithology		Percent	
Comments			

System	Devonian		
Series			
Group	Wapsipinicon		
Formation	Spillville		
Member			
Submember			
Start Depth	235.00 ft	End Depth	255.00 ft
Contact Accuracy			
Penetration			
Primary Lithology	Dolomite	Percent	100
Secondary Lithology		Percent	
Tertiary Lithology		Percent	
Comments			

System	Ordovician		
Series			
Group			
Formation	Maquoketa		
Member			
Submember			
Start Depth	255.00 ft	End Depth	275.00 ft
Contact Accuracy			
Penetration			
Primary Lithology	Chert/Chalcedony	Percent	50
Secondary Lithology	Dolomite	Percent	50
Tertiary Lithology		Percent	
Comments			

Water Production Information

Date	01/25/2007	Start Time	
Aquifer	Unknown		
Static Water Level	12.00 ft	Yield	30 gallons per minute
Pumping Water Level	75 ft	Yield Method	Unknown
Measurement	Unknown	Pump Test	Yes
Pump Method	Airlifted	Duration	0 mins
Comments			

Chip Storage Information

Date	05/15/2007		
Storage	OD4-1446>1447	Bin	
Number of Boxes	2	Number of Samples	55
Sample Intervals	5	Sample Gaps	
Sample Top	0 ft	Sample Bottom	275 ft
Washed Top	0 ft	Washed Bottom	275 ft

**Duplicate Storage
Comments**

<https://www.ihr.uiowa.edu/igs/geosam/well/63725/general-information>