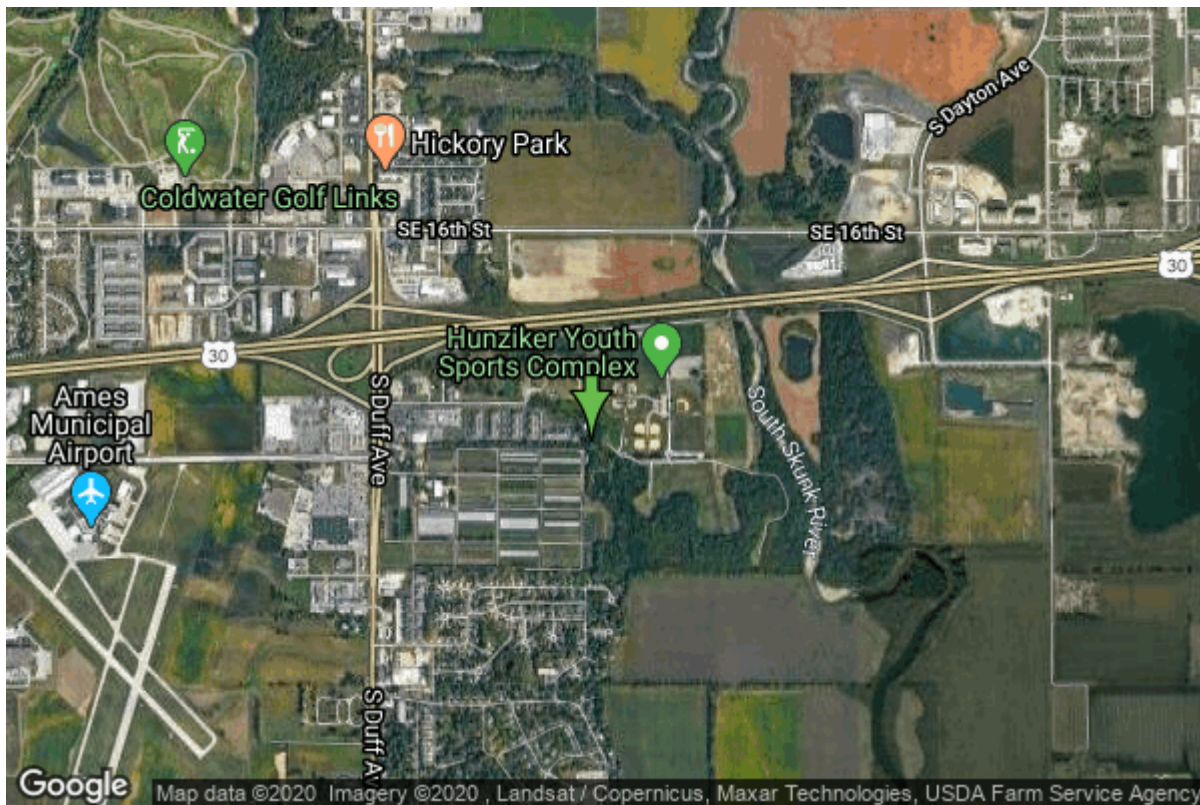


# Well W#63795 Information



<b>Date Received</b>	05/24/2007	<b>State</b>	Iowa
<b>Owner Name</b>	Ames, City Of	<b>County</b>	Story
<b>Alt Name</b>	#25	<b>Quadrangle</b>	Ames East, Iowa
<b>WNumber</b>	63795	<b>Township</b>	T83N
<b>PWTS ID</b>	0	<b>Range</b>	R24W
<b>PWS ID</b>	8503039	<b>Section</b>	13
<b>Storet ID</b>	0	<b>Quarter</b>	NW SW SW
<b>SDWIS ID</b>	2585868	<b>Latitude</b>	42.0015960000
<b>USGS ID</b>	0	<b>Longitude</b>	-93.6001340000
<b>Project</b>	Source Water Protection	<b>Accuracy</b>	
<b>Operator</b>	Unknown	<b>UTM X</b>	450299
		<b>UTM Y</b>	4650128

---

<b>Site Type</b>	Drilled hole	<b>Drilling Company</b>	Cahoy Inc.
<b>Well Status</b>	Active	<b>Drilling Date</b>	01/07/2007
<b>Field Located</b>	No	<b>Drilling Method</b>	Rotary
<b>Elevation</b>	880 ft	<b>Bedrock Depth</b>	0 ft
<b>Elevation Accuracy</b>	Digital Elevation Model Accurate to 5 ft	<b>Well Depth</b>	76 ft
<b>Landscape Position</b>	Level Surface	<b>Total Depth</b>	76 ft
		<b>Well Types</b>	Municipal, Public Supply
		<b>Aquifers</b>	Alluvium

## Hole Construction Information

<b>Date</b>	01/07/2007	<b>Depth</b>	76.00 ft
<b>Diameter</b>	42.00 in		

## Comments

# Casing Construction Information

Date	01/07/2007	Casing Type	Unknown
Start Depth	-7.00 ft	End Depth	45.00 ft
Diameter	30.00 in	Amount	52.00 ft
Comments			

# Screen Construction Information

Date	01/07/2007		
Screen Type	Steel	Slot Size	0.09
Start Depth	45.00 ft	End Depth	75.00 ft
Diameter	30.00 in	Amount	30 ft
Comments	bottom capped with stainless steel plate		

# Grout Construction Information

Date	01/07/2007		
Grout Type	Bentonite (Clay)	Grout Placement	Unknown
Start Depth	8.00 ft	End Depth	29.00 ft
Comments			

---

Date	01/07/2007		
Grout Type	Cement	Grout Placement	Unknown
Start Depth	0.00 ft	End Depth	8.00 ft
Comments			

# Gravel Pack Construction Information

Date	01/07/2007		
Gravel Pack Type	Red Flint	Slot Size	
Start Depth	29.00 ft	End Depth	75.00 ft
Comments			

# Pump Construction Information

Date	04/17/2007	Pump Type	Turbine
Diameter	12.00 in	Rating	840
Depth Intake	50.00 ft		
Comments			

# Log Information

**Date**  
**Log Types**                      Drillers log  
**Prepared By**                      Unknown  
**Comments**

# Water Production Information

<b>Date</b>	01/31/2007	<b>Start Time</b>	09:00
<b>Aquifer</b>	Unknown	<b>Yield</b>	1350 gallons per minute
<b>Static Water Level</b>	12.00 ft	<b>Yield Method</b>	Orifice
<b>Pumping Water Level</b>	28 ft	<b>Pump Test</b>	Yes
<b>Measurement</b>	Airline	<b>Duration</b>	21 mins
<b>Pump Method</b>	Pumped		
<b>Comments</b>			

# Chip Storage Information

<b>Date</b>	11/25/2007	<b>Bin</b>	
<b>Storage</b>	OD4-1510	<b>Number of Samples</b>	15
<b>Number of Boxes</b>	1	<b>Sample Gaps</b>	75-76
<b>Sample Intervals</b>	5	<b>Sample Bottom</b>	75 ft
<b>Sample Top</b>	0 ft	<b>Washed Bottom</b>	0 ft
<b>Washed Top</b>	0 ft		
<b>Duplicate Storage</b>			
<b>Comments</b>			

<https://www.ihr.uiowa.edu/igs/geosam/well/63795/general-information>