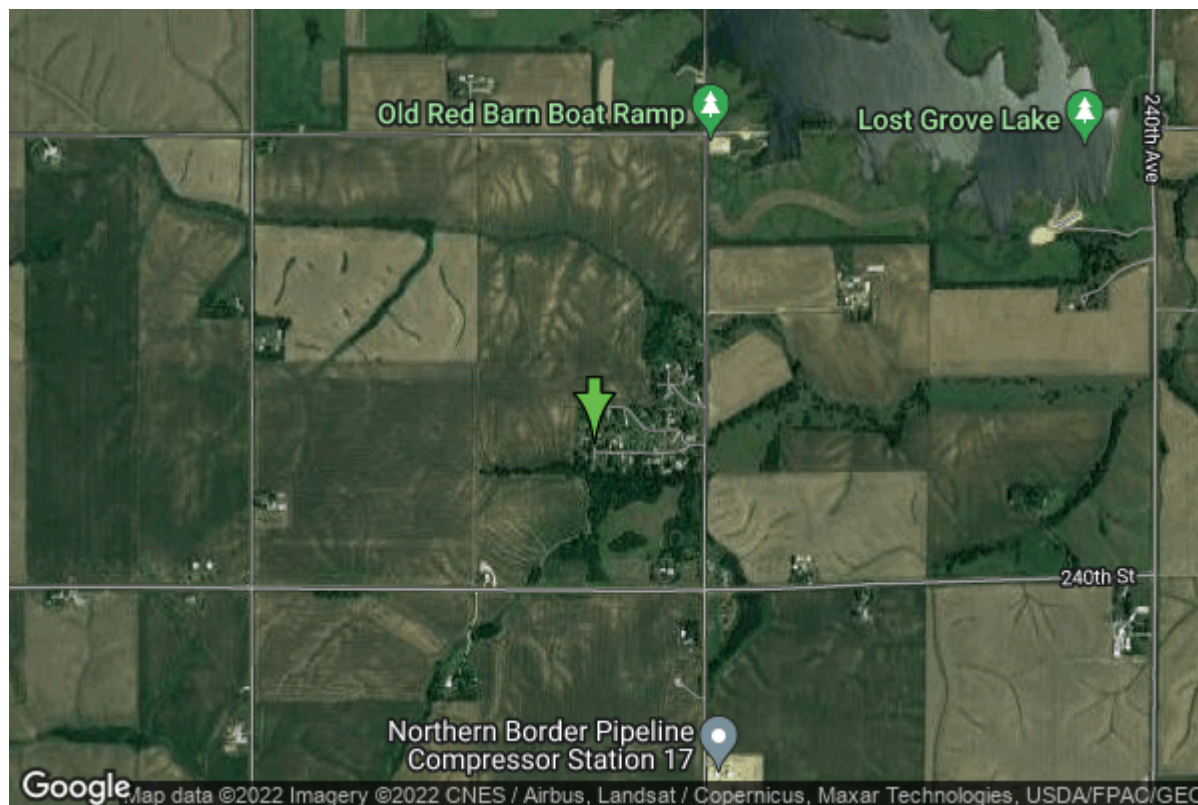


# Well W#63916 Information



<b>Date Received</b>	08/08/2007	<b>State</b>	Iowa
<b>Owner Name</b>	Willow Stream Estates	<b>County</b>	Scott
<b>Alt Name</b>	Well #3	<b>Quadrangle</b>	Mc Causland, Iowa
<b>WNumber</b>	63916	<b>Township</b>	T79N
<b>PWTS ID</b>	0	<b>Range</b>	R4E
<b>PWS ID</b>	8230301	<b>Section</b>	11
<b>Storet ID</b>	0	<b>Quarter</b>	SE NE SW
<b>SDWIS ID</b>	2587681	<b>Latitude</b>	41.6600370000
<b>USGS ID</b>	0	<b>Longitude</b>	-90.4559070000
<b>Project</b>	Source Water Protection	<b>Accuracy</b>	
<b>Operator</b>	Unknown	<b>UTM X</b>	711822
		<b>UTM Y</b>	4615159

<b>Site Type</b>	Drilled hole	<b>Drilling Company</b>	Gingerich Well Co.
<b>Well Status</b>	Active	<b>Drilling Date</b>	07/03/2007
<b>Field Located</b>	No	<b>Drilling Method</b>	Rotary
<b>Elevation</b>	718 ft	<b>Bedrock Depth</b>	108 ft
<b>Elevation Accuracy</b>	Digital Elevation Model Accurate to 5 ft	<b>Well Depth</b>	310 ft
<b>Landscape Position</b>	Hillside	<b>Total Depth</b>	315 ft
		<b>Well Types</b>	Public Supply
		<b>Aquifers</b>	Silurian

## Hole Construction Information

<b>Date</b>	07/03/2007	<b>Depth</b>	184.00 ft
<b>Diameter</b>	11.00 in		

## Comments

---

Date	07/03/2007		
Diameter	6.00 in	Depth	310.00 ft
Comments			

## Casing Construction Information

Date	07/03/2007	Casing Type	Steel
Start Depth	-2.00 ft	End Depth	184.00 ft
Diameter	6.00 in	Amount	186.00 ft
Comments			

## Grout Construction Information

Date	07/03/2007		
Grout Type	Bentonite (Clay)	Grout Placement	Haliburton With Plug
Start Depth	0.00 ft	End Depth	184.00 ft
Comments			

## Log Information

Date	
Log Types	Drillers log
Prepared By	Unknown
Comments	

## Water Production Information

Date	07/03/2007	Start Time	16:30
Aquifer	Bedrock		
Static Water Level	43.00 ft	Yield	65 gallons per minute
Pumping Water Level	59 ft	Yield Method	Estimate
Measurement	Estimate	Pump Test	Yes
Pump Method	Airlifted	Duration	2 mins
Comments			

## Chip Storage Information

Date	12/07/2007		
Storage	OD4-1514	Bin	
Number of Boxes	1	Number of Samples	62
Sample Intervals	5	Sample Gaps	130-135
Sample Top	0 ft	Sample Bottom	315 ft
Washed Top	180 ft	Washed Bottom	315 ft

**Duplicate Storage  
Comments**

<https://www.ihr.uiowa.edu/igs/geosam/well/63916/general-information>