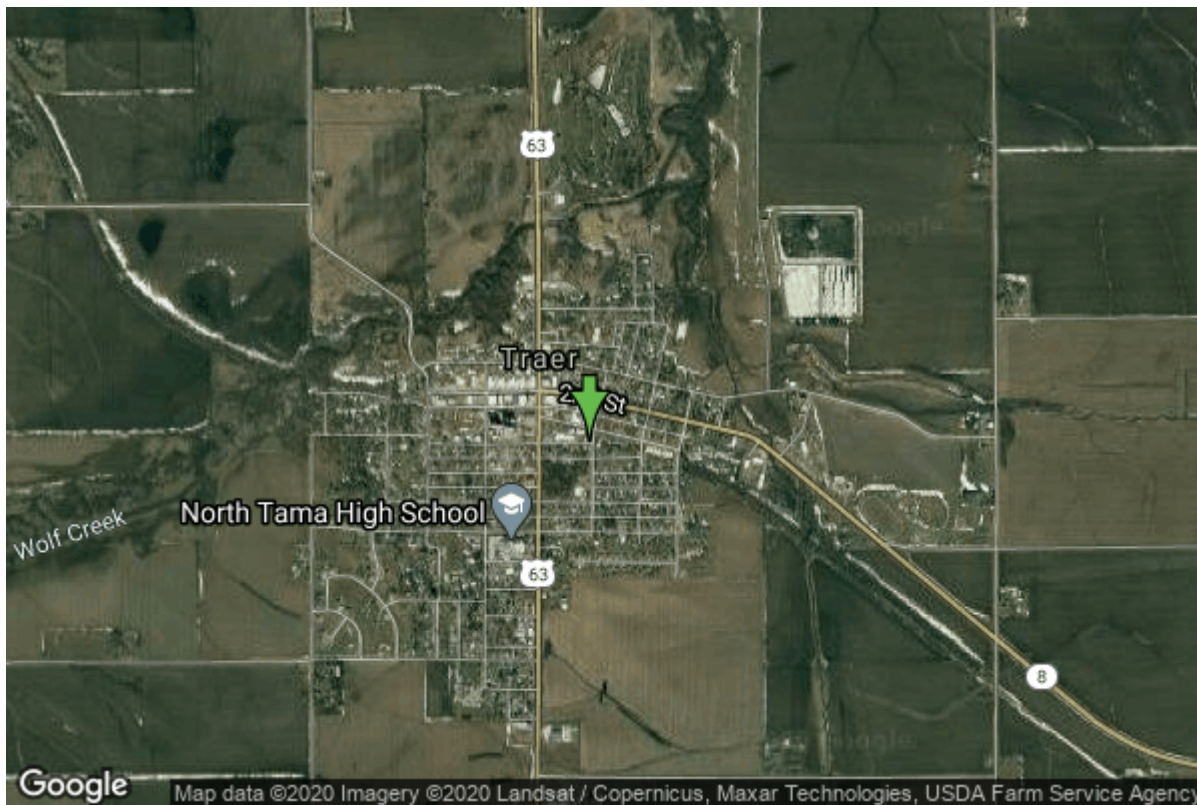


Well W#64093 Information



Date Received	10/23/2007	State	Iowa
Owner Name	Traer, City Of	County	Tama
Alt Name	#5	Quadrangle	Traer, Iowa
WNumber	64093	Township	T85N
PWTS ID	0	Range	R14W
PWS ID	8681030	Section	10
Storet ID	0	Quarter	NE SW NE
SDWIS ID	2586803	Latitude	42.1918000000
USGS ID	0	Longitude	-92.4626000000
Project	Source Water Protection	Accuracy	
Operator	Unknown	UTM X	544372
		UTM Y	4671212

Site Type	Drilled hole	Drilling Company	Northway Corporation
Well Status	Standby	Drilling Date	09/04/2007
Field Located	No	Drilling Method	Rotary
Elevation	928 ft	Bedrock Depth	214 ft
Elevation Accuracy	Digital Elevation Model Accurate to 5 ft	Well Depth	275 ft
Landscape Position	Upland	Total Depth	275 ft
		Well Types	Municipal, Public Supply
		Aquifers	Devonian

Hole Construction Information

Date	09/04/2007	Depth	245.00 ft
Diameter	17.50 in		

Comments

Date	09/04/2007	Depth	275.00 ft
Diameter	11.75 in		
Comments			

Casing Construction Information

Date	09/04/2007	Casing Type	Unknown
Start Depth	-2.00 ft	End Depth	245.00 ft
Diameter	12.75 in	Amount	247.00 ft
Comments			

Grout Construction Information

Date	09/04/2007	Grout Placement	Tremie With Shoe
Grout Type	Neat Cement	End Depth	247.00 ft
Start Depth	0.00 ft		
Comments			

Log Information

Date	
Log Types	Drillers log
Prepared By	Unknown
Comments	

Water Production Information

Date	09/06/2007	Start Time	
Aquifer	Bedrock	Yield	340 gallons per minute
Static Water Level	47.00 ft	Yield Method	Unknown
Pumping Water Level	206 ft	Pump Test	Yes
Measurement	Electric Line	Duration	0 mins
Pump Method	Airlifted		
Comments			

Chip Storage Information

Date	10/29/2007	Bin	
Storage	OD4-1498	Number of Samples	55
Number of Boxes	1	Sample Gaps	
Sample Intervals	5	Sample Bottom	275 ft
Sample Top	0 ft	Washed Bottom	275 ft
Washed Top	215 ft		

**Duplicate Storage
Comments**

<https://www.ihr.uiowa.edu/igs/geosam/well/64093/general-information>