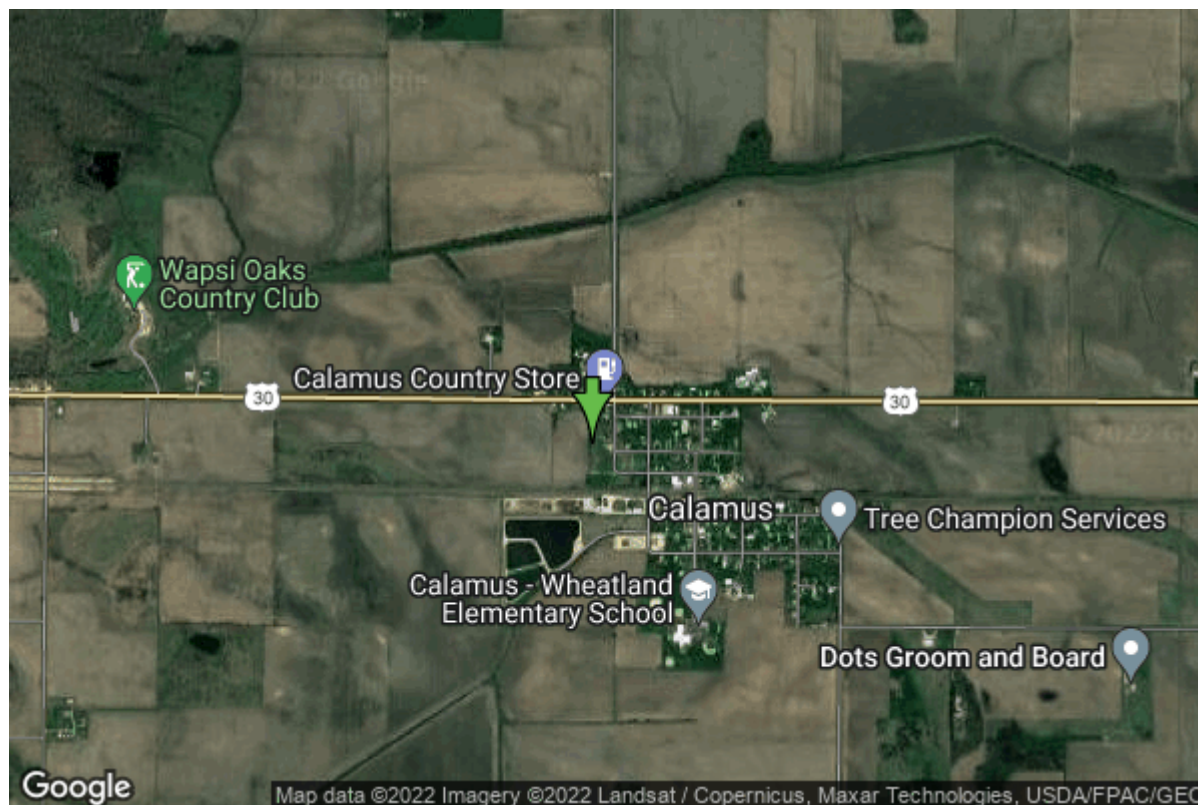


Well W#64546 Information



Date Received	02/18/2008	State	Iowa
Owner Name	Calamus, City Of	County	Clinton
Alt Name	Well #2	Quadrangle	Wheatland, Iowa
WNumber	64546	Township	T81N
PWTS ID	0	Range	R2E
PWS ID	2320062	Section	18
Storet ID	0	Quarter	NE NE NE
SDWIS ID	2586735	Latitude	41.8278890000
USGS ID	0	Longitude	-90.7625430000
Project	Source Water Protection	Accuracy	
Operator	Unknown	UTM X	685805
		UTM Y	4633087

Site Type	Drilled hole	Drilling Company	Shawver Well Co.
Well Status	Active	Drilling Date	03/10/2006
Field Located	No	Drilling Method	Rotary
Elevation	701 ft	Bedrock Depth	73 ft
Elevation Accuracy	Topo Map Accurate to 2 ft	Well Depth	1290 ft
Landscape Position	Unknown	Total Depth	1290 ft
		Well Types	Municipal, Public Supply
		Aquifers	Cambrian-Ordovician

Hole Construction Information

Date	03/10/2006	Depth	25.00 ft
Diameter	23.00 in		

Comments

Date	03/10/2006	Depth	93.00 ft
Diameter	19.00 in		
Comments			

Date	03/10/2006	Depth	909.00 ft
Diameter	13.00 in		
Comments			

Date	03/10/2006	Depth	1290.00 ft
Diameter	7.88 in		
Comments			

Casing Construction Information

Date	03/10/2006	Casing Type	Steel
Start Depth	-2.00 ft	End Depth	909.00 ft
Diameter	8.00 in	Amount	0.00 ft
Comments			

Log Information

Date	03/10/2006
Log Types	Drillers log
Prepared By	Shawver Well Co.
Comments	

Formation Information

Formation Color	Brown	Formation Lithology	sand
Start Depth	0.00 ft	End Depth	22.00 ft
Comments			

Formation Color	Green/Bluish	Formation Lithology	clay
Start Depth	22.00 ft	End Depth	37.50 ft
Comments			

Formation Color	Brown	Formation Lithology	sand
Start Depth	37.50 ft	End Depth	51.00 ft
Comments			

Formation Color	Gray/Bluish	Formation Lithology	clay
Start Depth	51.00 ft	End Depth	72.50 ft
Comments			

Formation Color	Yellow	Formation Lithology	limestone
Start Depth	72.50 ft	End Depth	93.00 ft
Comments			

Formation Color	Yellow	Formation Lithology	limestone
Start Depth	93.00 ft	End Depth	140.00 ft
Comments			

Formation Color	Cream	Formation Lithology	limestone
Start Depth	140.00 ft	End Depth	170.00 ft
Comments			

Formation Color	Yellow	Formation Lithology	limestone
Start Depth	170.00 ft	End Depth	170.50 ft
Comments			

Formation Color	Gray	Formation Lithology	limestone
Start Depth	170.50 ft	End Depth	248.00 ft
Comments			

Formation Color	Gray	Formation Lithology	limestone
Start Depth	248.00 ft	End Depth	286.00 ft
Comments			

Formation Color	Blue	Formation Lithology	shale
Start Depth	286.00 ft	End Depth	290.00 ft
Comments			

Formation Color	Gray/Bluish	Formation Lithology	shale
Start Depth	290.00 ft	End Depth	329.00 ft
Comments			

Formation Color	Gray/Bluish	Formation Lithology	shale
Start Depth	329.00 ft	End Depth	380.00 ft
Comments			

Formation Color	Gray/Bluish	Formation Lithology	shale
Start Depth	380.00 ft	End Depth	443.00 ft
Comments			

Formation Color	Brown	Formation Lithology	shale
Start Depth	443.00 ft	End Depth	472.00 ft
Comments			

Formation Color	Brown	Formation Lithology	shale
Start Depth	472.00 ft	End Depth	489.00 ft
Comments			

Comments

Formation Color	Black	Formation Lithology	limestone
Start Depth	489.00 ft	End Depth	725.00 ft
Comments			

Formation Color	Blue	Formation Lithology	shale
Start Depth	725.00 ft	End Depth	828.00 ft
Comments			

Formation Color	White	Formation Lithology	sandstone
Start Depth	828.00 ft	End Depth	872.00 ft
Comments			

Formation Color	Gray	Formation Lithology	limestone
Start Depth	872.00 ft	End Depth	909.00 ft
Comments			

Formation Color	Cream	Formation Lithology	limestone
Start Depth	909.00 ft	End Depth	975.00 ft
Comments			

Formation Color	Cream	Formation Lithology	limestone
Start Depth	975.00 ft	End Depth	984.00 ft
Comments			

Formation Color	Cream	Formation Lithology	limestone
Start Depth	984.00 ft	End Depth	1012.00 ft
Comments			

Formation Color	Brown	Formation Lithology	limestone
Start Depth	1012.00 ft	End Depth	1088.00 ft
Comments			

Formation Color	Cream	Formation Lithology	limestone
Start Depth	1088.00 ft	End Depth	1151.00 ft
Comments			

Formation Color	Gray	Formation Lithology	limestone
Start Depth	1151.00 ft	End Depth	1163.00 ft
Comments			

Formation Color	Cream	Formation Lithology	limestone
Start Depth	1163.00 ft	End Depth	1184.00 ft
Comments			

Formation Color	Pink	Formation Lithology	limestone
------------------------	------	----------------------------	-----------

Start Depth	1184.00 ft	End Depth	1192.00 ft
Comments			
Formation Color	Brown	Formation Lithology	sandstone
Start Depth	1192.00 ft	End Depth	1196.00 ft
Comments			
Formation Color	Pink	Formation Lithology	limestone
Start Depth	1196.00 ft	End Depth	1280.00 ft
Comments	with sandstone		
Formation Color	Gray	Formation Lithology	limestone
Start Depth	1280.00 ft	End Depth	1284.00 ft
Comments			
Formation Color	Gray	Formation Lithology	sandstone
Start Depth	1284.00 ft	End Depth	1290.00 ft
Comments			

Stratigraphy Information

System	Quaternary		
Series			
Group			
Formation			
Member			
Submember			
Start Depth	0.00 ft	End Depth	75.00 ft
Contact Accuracy			
Penetration			
Primary Lithology	Sand And Gravel	Percent	100
Secondary Lithology		Percent	
Tertiary Lithology		Percent	
Comments			
System	Silurian		
Series			
Group			
Formation			
Member			
Submember			
Start Depth	75.00 ft	End Depth	210.00 ft
Contact Accuracy			
Penetration			
Primary Lithology	Dolomite	Percent	100
Secondary Lithology		Percent	
Tertiary Lithology		Percent	
Comments			

System	Silurian		
Series			
Group			
Formation	Blanding		
Member			
Submember			
Start Depth	210.00 ft	End Depth	255.00 ft
Contact Accuracy			
Penetration			
Primary Lithology	Dolomite	Percent	80
Secondary Lithology	Chert/Chalcedony	Percent	20
Tertiary Lithology		Percent	
Comments			

System	Ordovician		
Series			
Group			
Formation	Maquoketa		
Member			
Submember			
Start Depth	255.00 ft	End Depth	450.00 ft
Contact Accuracy			
Penetration			
Primary Lithology	Shale	Percent	80
Secondary Lithology	Dolomite	Percent	20
Tertiary Lithology		Percent	
Comments			

System	Ordovician		
Series			
Group			
Formation	Maquoketa		
Member	Elgin Limestone		
Submember			
Start Depth	450.00 ft	End Depth	480.00 ft
Contact Accuracy			
Penetration			
Primary Lithology	Shale	Percent	80
Secondary Lithology	Dolomite	Percent	20
Tertiary Lithology		Percent	
Comments			

System	Ordovician		
Series			
Group	Galena		
Formation			
Member			
Submember			

Start Depth	480.00 ft	End Depth	720.00 ft
Contact Accuracy			
Penetration			
Primary Lithology	Limestone	Percent	77
Secondary Lithology	Dolomite	Percent	20
Tertiary Lithology	Chert/Chalcedony	Percent	3
Comments			

System	Ordovician		
Series			
Group	Galena		
Formation	Decorah/Platteville Undiff.		
Member			
Submember			
Start Depth	720.00 ft	End Depth	815.00 ft
Contact Accuracy			
Penetration			
Primary Lithology	Shale	Percent	81
Secondary Lithology	Dolomite	Percent	17
Tertiary Lithology	Sandstone	Percent	2
Comments			

System	Ordovician		
Series			
Group	Ancell		
Formation	Glenwood		
Member			
Submember			
Start Depth	815.00 ft	End Depth	828.00 ft
Contact Accuracy			
Penetration			
Primary Lithology	Shale	Percent	100
Secondary Lithology		Percent	
Tertiary Lithology		Percent	
Comments	base in part based on drillers log		

System	Ordovician		
Series			
Group	Ancell		
Formation	St. Peter Sandstone		
Member	Tonti		
Submember			
Start Depth	828.00 ft	End Depth	883.00 ft
Contact Accuracy			
Penetration			
Primary Lithology	Sandstone	Percent	95
Secondary Lithology	Dolomite	Percent	5
Tertiary Lithology		Percent	
Comments			

System	Ordovician		
Series			
Group	Prairie Du Chien		
Formation	Shakopee		
Member			
Submember			
Start Depth	883.00 ft	End Depth	1030.00 ft
Contact Accuracy			
Penetration			
Primary Lithology	Dolomite	Percent	93
Secondary Lithology	Chert/Chalcedony	Percent	5
Tertiary Lithology	Shale	Percent	2
Comments			

System	Ordovician		
Series			
Group	Prairie Du Chien		
Formation	Oneota		
Member			
Submember			
Start Depth	1030.00 ft	End Depth	1205.00 ft
Contact Accuracy			
Penetration			
Primary Lithology	Dolomite	Percent	93
Secondary Lithology	Chert/Chalcedony	Percent	7
Tertiary Lithology		Percent	
Comments			

System	Cambrian		
Series			
Group			
Formation	Jordan		
Member	Coon Valley		
Submember			
Start Depth	1205.00 ft	End Depth	1225.00 ft
Contact Accuracy			
Penetration			
Primary Lithology	Dolomite	Percent	98
Secondary Lithology	Chert/Chalcedony	Percent	2
Tertiary Lithology		Percent	
Comments			

System	Cambrian		
Series			
Group			
Formation	Jordan		
Member			
Submember			

Start Depth	1225.00 ft	End Depth	1290.00 ft
Contact Accuracy			
Penetration			
Primary Lithology	Sandstone	Percent	75
Secondary Lithology	Dolomite	Percent	15
Tertiary Lithology	Chert/Chalcedony	Percent	10
Comments			

Water Production Information

Date	09/12/2014	Start Time	
Aquifer			
Static Water Level	188.00 ft	Yield	0 gallons per minute
Pumping Water Level	196 ft	Yield Method	Unknown
Measurement	Airline	Pump Test	No
Pump Method	Unknown	Duration	0 mins
Comments	Water levels taken from DNR Jordan questionnaire.		

Date	03/10/2006	Start Time	
Aquifer	Unknown		
Static Water Level	186.00 ft	Yield	200 gallons per minute
Pumping Water Level	360 ft	Yield Method	Unknown
Measurement	Unknown	Pump Test	Yes
Pump Method	Airlifted	Duration	0 mins
Comments			

Chip Storage Information

Date	02/22/2008		
Storage	OD4-1569>1573	Bin	
Number of Boxes	5	Number of Samples	257
Sample Intervals	5	Sample Gaps	275-280
Sample Top	0 ft	Sample Bottom	1290 ft
Washed Top	70 ft	Washed Bottom	1290 ft
Duplicate Storage			
Comments			

<https://www.iihr.uiowa.edu/igs/geosam/well/64546/general-information>