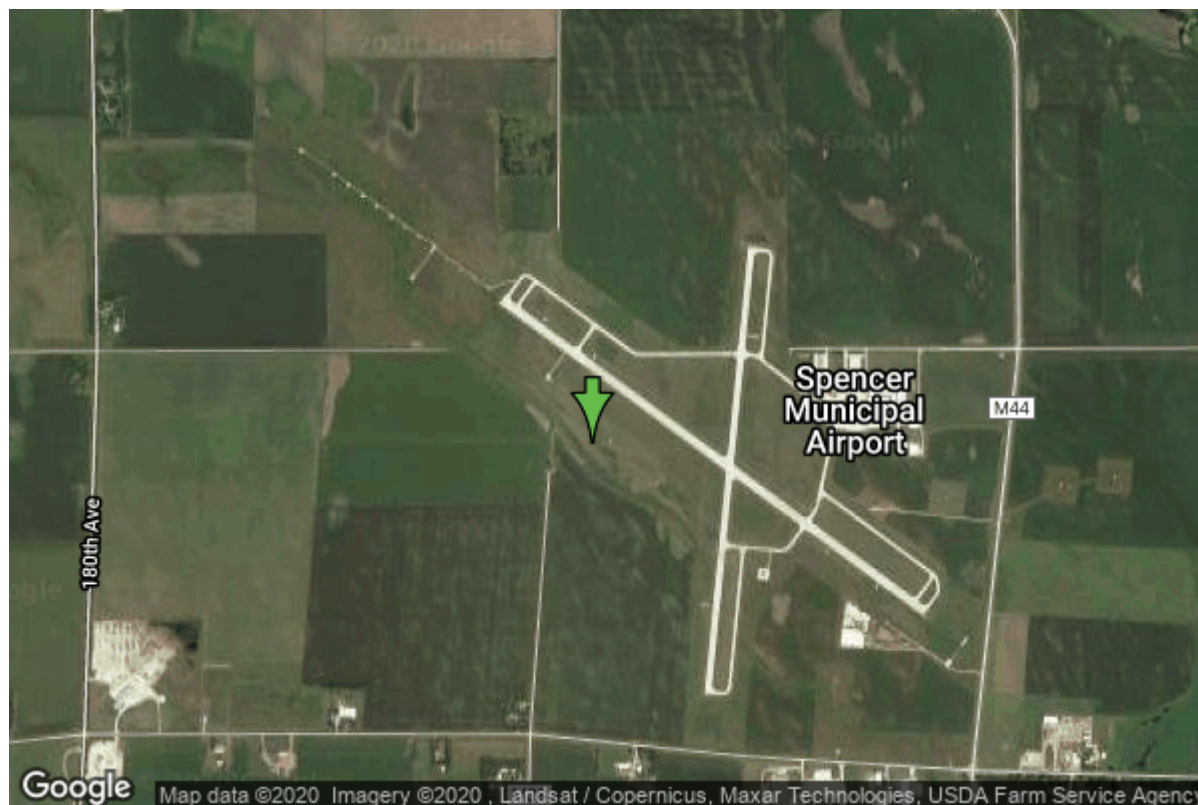


Well W#65514 Information



Date Received	10/22/2008	State	Iowa
Owner Name	Spencer, City Of	County	Clay
Alt Name	Well #11	Quadrangle	Spencer, Iowa
WNumber	65514	Township	T96N
PWTS ID	0	Range	R37W
PWS ID	2171071	Section	3
Storet ID	0	Quarter	NW NW SE
SDWIS ID	2586896	Latitude	43.1662490000
USGS ID	0	Longitude	-95.2076160000
Project	Source Water Protection	Accuracy	
Operator	Unknown	UTM X	320544
		UTM Y	4781642

Site Type	Drilled hole	Drilling Company	Cahoy Inc.
Well Status	Active	Drilling Date	05/20/2008
Field Located	No	Drilling Method	Rotary
Elevation	1335 ft	Bedrock Depth	0 ft
Elevation Accuracy	Digital Elevation Model Accurate to 5 ft	Well Depth	77 ft
Landscape Position	Level Surface	Total Depth	77 ft
		Well Types	Municipal, Public Supply
		Aquifers	Alluvium

Hole Construction Information

Date	05/20/2008	Depth	76.50 ft
Diameter	30.00 in		

Comments

Casing Construction Information

Date	05/20/2008	Casing Type	Steel
Start Depth	-2.00 ft	End Depth	56.50 ft
Diameter	16.00 in	Amount	60.00 ft
Comments			

Screen Construction Information

Date	05/20/2008	Slot Size	0.80
Screen Type	Unknown	End Depth	76.50 ft
Start Depth	5.50 ft	Amount	20 ft
Diameter	20.00 in		
Comments			

Grout Construction Information

Date	05/20/2008	Grout Placement	Tremie
Grout Type	Bentonite (Clay)	End Depth	35.00 ft
Start Depth	30.00 ft		
Comments			

Date	05/20/2008	Grout Placement	Tremie
Grout Type	Neat Cement	End Depth	30.00 ft
Start Depth	25.00 ft		
Comments			

Gravel Pack Construction Information

Date	05/20/2008	Slot Size	
Gravel Pack Type	Red Flint	End Depth	76.50 ft
Start Depth	35.00 ft		
Comments			

Pump Construction Information

Date	05/20/2008	Pump Type	Unknown
Diameter	8.00 in	Rating	800
Depth Intake	65.00 ft		
Comments			

Log Information

Date
Log Types Drillers log
Prepared By Unknown
Comments

Water Production Information

Date	06/01/2008	Start Time	06:00
Aquifer	Unknown	Yield	900 gallons per minute
Static Water Level	11.00 ft	Yield Method	Orifice
Pumping Water Level	24 ft	Pump Test	Yes
Measurement	Electric Line	Duration	72 mins
Pump Method	Airlifted		
Comments			

Chip Storage Information

Date	10/05/2009	Bin	
Storage	OD5-775	Number of Samples	15
Number of Boxes	1	Sample Gaps	75-76.5
Sample Intervals	5	Sample Bottom	77 ft
Sample Top	0 ft	Washed Bottom	0 ft
Washed Top	0 ft		
Duplicate Storage			
Comments			

<https://www.ihr.uiowa.edu/igs/geosam/well/65514/general-information>