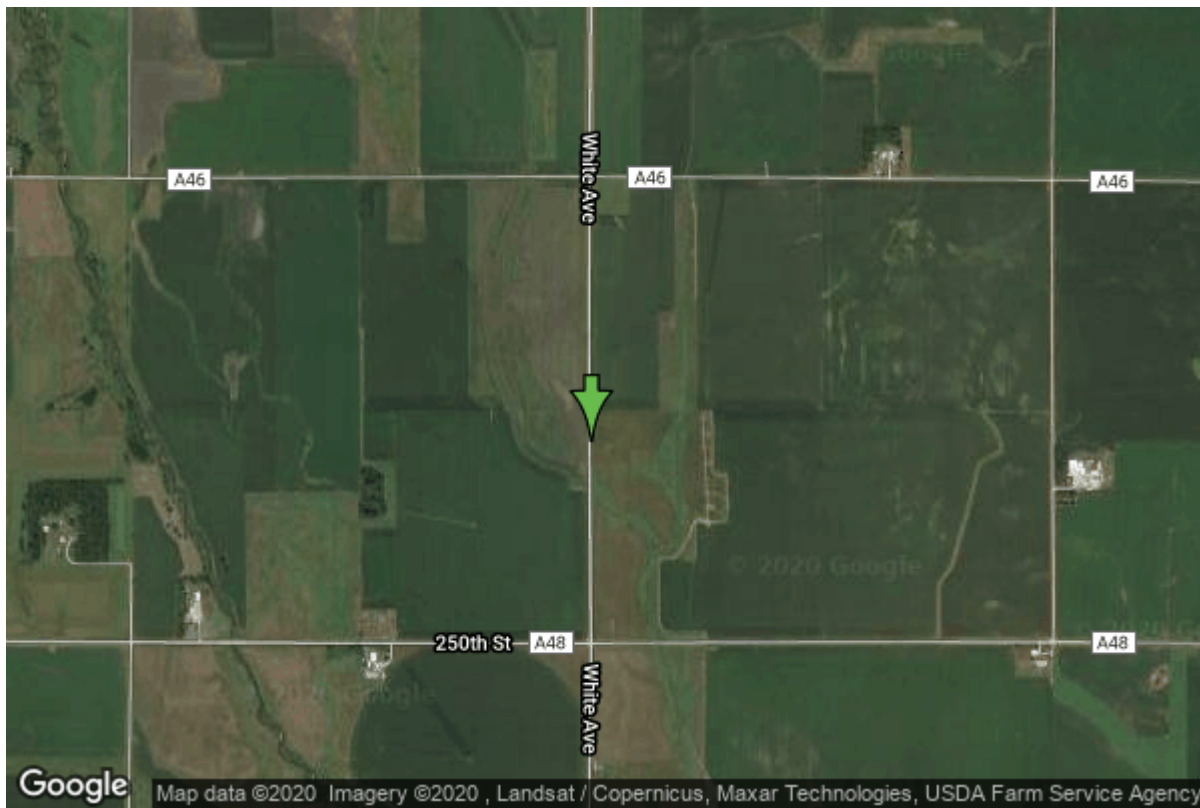


# Well W#67721 Information



<b>Date Received</b>	10/22/2009	<b>State</b>	Iowa
<b>Owner Name</b>	Osceola Co Rws North Subsystem	<b>County</b>	Osceola
<b>Alt Name</b>	R-1R2, WL18	<b>Quadrangle</b>	May City, Iowa
<b>WNumber</b>	67721	<b>Township</b>	T98N
<b>PWTS ID</b>	0	<b>Range</b>	R39W
<b>PWS ID</b>	7227701	<b>Section</b>	22
<b>Storet ID</b>	0	<b>Quarter</b>	SW NW NW
<b>SDWIS ID</b>	2588195	<b>Latitude</b>	43.2906230000
<b>USGS ID</b>	0	<b>Longitude</b>	-95.4468040000
<b>Project</b>	Source Water Protection	<b>Accuracy</b>	
<b>Operator</b>	Unknown	<b>UTM X</b>	301504
		<b>UTM Y</b>	4795996

---

<b>Site Type</b>	Drilled hole	<b>Drilling Company</b>	Lacey Well Drilling
<b>Well Status</b>	Active	<b>Drilling Date</b>	09/08/2009
<b>Field Located</b>	No	<b>Drilling Method</b>	Other
<b>Elevation</b>	1409 ft	<b>Bedrock Depth</b>	0 ft
<b>Elevation Accuracy</b>	Digital Elevation Model Accurate to 5 ft	<b>Well Depth</b>	42 ft
<b>Landscape Position</b>	Valley	<b>Total Depth</b>	42 ft
		<b>Well Types</b>	Public Supply, Rural Water District
		<b>Aquifers</b>	Alluvium

## Hole Construction Information

Date	09/08/2009		
Diameter	20.00 in	Depth	42.00 ft
Comments			

## Casing Construction Information

Date	09/08/2009	Casing Type	Steel
Start Depth	-1.00 ft	End Depth	32.00 ft
Diameter	12.00 in	Amount	33.00 ft
Comments			

## Screen Construction Information

Date	09/08/2009		
Screen Type	Steel	Slot Size	0.07
Start Depth	32.00 ft	End Depth	42.00 ft
Diameter	12.00 in	Amount	10 ft
Comments			

## Grout Construction Information

Date	09/08/2009		
Grout Type	Bentonite (Clay)	Grout Placement	Unknown
Start Depth	5.00 ft	End Depth	20.00 ft
Comments			

## Gravel Pack Construction Information

Date	09/08/2009		
Gravel Pack Type	Muscatine Gravel	Slot Size	
Start Depth	27.00 ft	End Depth	42.00 ft
Comments			

## Log Information

Date	
Log Types	Drillers log
Prepared By	Unknown
Comments	

# Water Production Information

<b>Date</b>	09/29/2009	<b>Start Time</b>	16:00
<b>Aquifer</b>	Unknown		
<b>Static Water Level</b>	5.00 ft	<b>Yield</b>	500 gallons per minute
<b>Pumping Water Level</b>	19 ft	<b>Yield Method</b>	Unknown
<b>Measurement</b>	Tape	<b>Pump Test</b>	Yes
<b>Pump Method</b>	Pumped	<b>Duration</b>	120 mins
<b>Comments</b>			

<https://www.iihr.uiowa.edu/igs/geosam/well/67721/general-information>