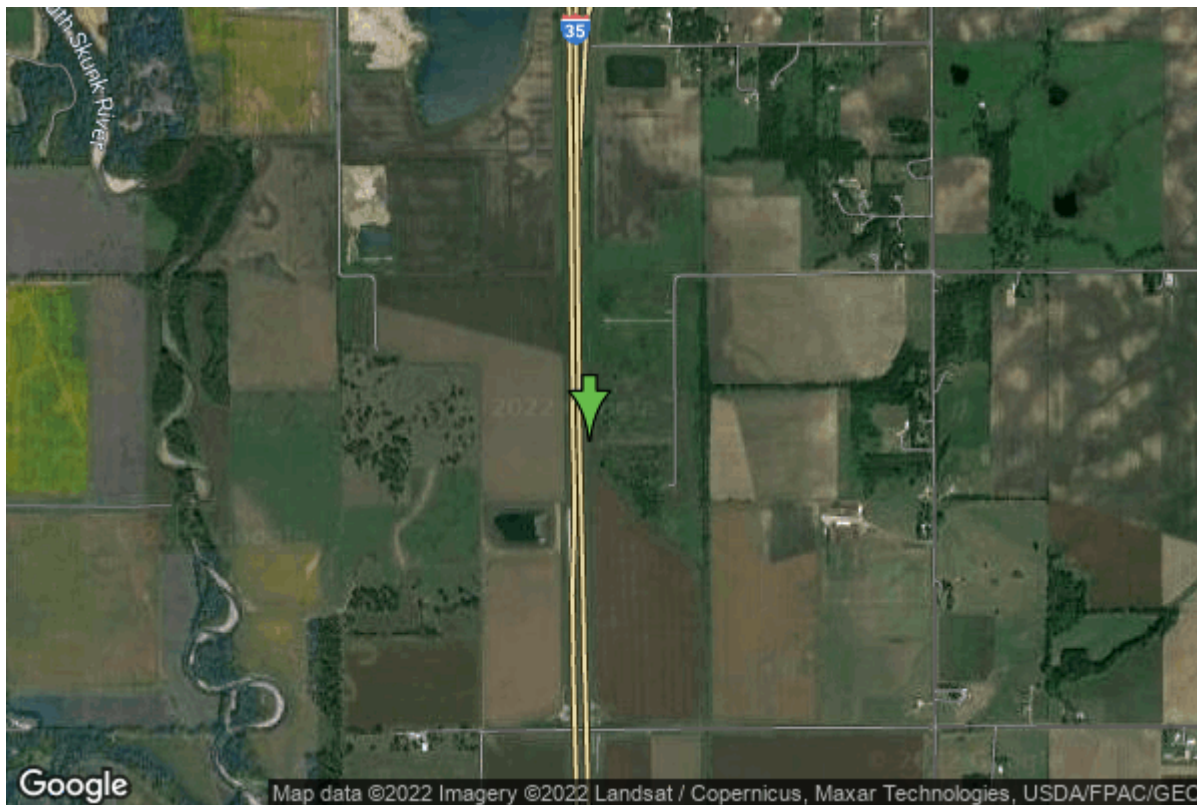


# Well W#68383 Information



<b>Date Received</b>	03/26/2008	<b>State</b>	Iowa
<b>Owner Name</b>	Nevada, City Of	<b>County</b>	Story
<b>Alt Name</b>	#8	<b>Quadrangle</b>	Huxley, Iowa
<b>WNumber</b>	68383	<b>Township</b>	T83N
<b>PWTS ID</b>	0	<b>Range</b>	R23W
<b>PWS ID</b>	8562044	<b>Section</b>	19
<b>Storet ID</b>	0	<b>Quarter</b>	NE SW NW
<b>SDWIS ID</b>	2587261	<b>Latitude</b>	41.9886190000
<b>USGS ID</b>	0	<b>Longitude</b>	-93.5696150000
<b>Project</b>	Source Water Protection	<b>Accuracy</b>	
<b>Operator</b>	Unknown	<b>UTM X</b>	452817
		<b>UTM Y</b>	4648669

---

<b>Site Type</b>	Drilled hole	<b>Drilling Company</b>	Northway Well & Pump Company
<b>Well Status</b>	Unknown	<b>Drilling Date</b>	03/07/2008
<b>Field Located</b>	No	<b>Drilling Method</b>	Rotary
<b>Elevation</b>	872 ft	<b>Bedrock Depth</b>	0 ft
<b>Elevation Accuracy</b>	Topo Map Accurate to 2 ft	<b>Well Depth</b>	91 ft
<b>Landscape Position</b>	Valley	<b>Total Depth</b>	91 ft
		<b>Well Types</b>	Municipal, Public Supply
		<b>Aquifers</b>	

## Hole Construction Information

Date	03/07/2008		
Diameter	48.00 in	Depth	91.00 ft
Comments			

## Casing Construction Information

Date	03/07/2008	Casing Type	Steel
Start Depth	-2.00 ft	End Depth	59.00 ft
Diameter	16.00 in	Amount	61.00 ft
Comments			

## Screen Construction Information

Date	03/07/2008		
Screen Type	Steel	Slot Size	0.08
Start Depth	59.00 ft	End Depth	89.00 ft
Diameter	16.00 in	Amount	30 ft
Comments			

## Grout Construction Information

Date	03/07/2008		
Grout Type	Unknown	Grout Placement	Tremie
Start Depth	5.00 ft	End Depth	43.00 ft
Comments	17 yds.		

## Gravel Pack Construction Information

Date	03/07/2008		
Gravel Pack Type	Unknown	Slot Size	
Start Depth	45.00 ft	End Depth	91.00 ft
Comments	30 Tons		

## Pump Construction Information

Date	07/31/2008	Pump Type	Submersible
Diameter	12.00 in	Rating	600
Depth Intake	55.00 ft		
Comments			

# Log Information

**Date** 03/07/2008  
**Log Types** Drillers log  
**Prepared By** Northway Well & Pump Company  
**Comments**

## Formation Information

<b>Formation Color</b>	No Color Noted	<b>Formation Lithology</b>	unknown/gap
<b>Start Depth</b>	0.00 ft	<b>End Depth</b>	5.00 ft
<b>Comments</b>	"Berm"		

---

<b>Formation Color</b>	Black	<b>Formation Lithology</b>	soil or fill
<b>Start Depth</b>	5.00 ft	<b>End Depth</b>	12.00 ft
<b>Comments</b>			

---

<b>Formation Color</b>	Brown	<b>Formation Lithology</b>	sand
<b>Start Depth</b>	12.00 ft	<b>End Depth</b>	49.00 ft
<b>Comments</b>			

---

<b>Formation Color</b>	Brown	<b>Formation Lithology</b>	sand
<b>Start Depth</b>	49.00 ft	<b>End Depth</b>	55.00 ft
<b>Comments</b>	with clay streaks		

---

<b>Formation Color</b>	Brown	<b>Formation Lithology</b>	sand and gravel
<b>Start Depth</b>	55.00 ft	<b>End Depth</b>	89.00 ft
<b>Comments</b>			

---

<b>Formation Color</b>	Gray	<b>Formation Lithology</b>	clay
<b>Start Depth</b>	89.00 ft	<b>End Depth</b>	91.00 ft
<b>Comments</b>			

## Water Production Information

<b>Date</b>	03/07/2008	<b>Start Time</b>	
<b>Aquifer</b>	Unknown	<b>Yield</b>	1000 gallons per minute
<b>Static Water Level</b>	12.00 ft	<b>Yield Method</b>	Orifice
<b>Pumping Water Level</b>	20 ft	<b>Pump Test</b>	Yes
<b>Measurement</b>	Tape	<b>Duration</b>	960 mins
<b>Pump Method</b>	Airlifted		
<b>Comments</b>			

# Chip Storage Information

<b>Date</b>	01/05/2010		
<b>Storage</b>	OD5-927	<b>Bin</b>	
<b>Number of Boxes</b>	1	<b>Number of Samples</b>	16
<b>Sample Intervals</b>	5	<b>Sample Gaps</b>	80-91
<b>Sample Top</b>	0 ft	<b>Sample Bottom</b>	91 ft
<b>Washed Top</b>	0 ft	<b>Washed Bottom</b>	0 ft
<b>Duplicate Storage</b>	OD4-1598>OD4-1599 (W64759)		
<b>Comments</b>			

<https://www.iihr.uiowa.edu/igs/geosam/well/68383/general-information>