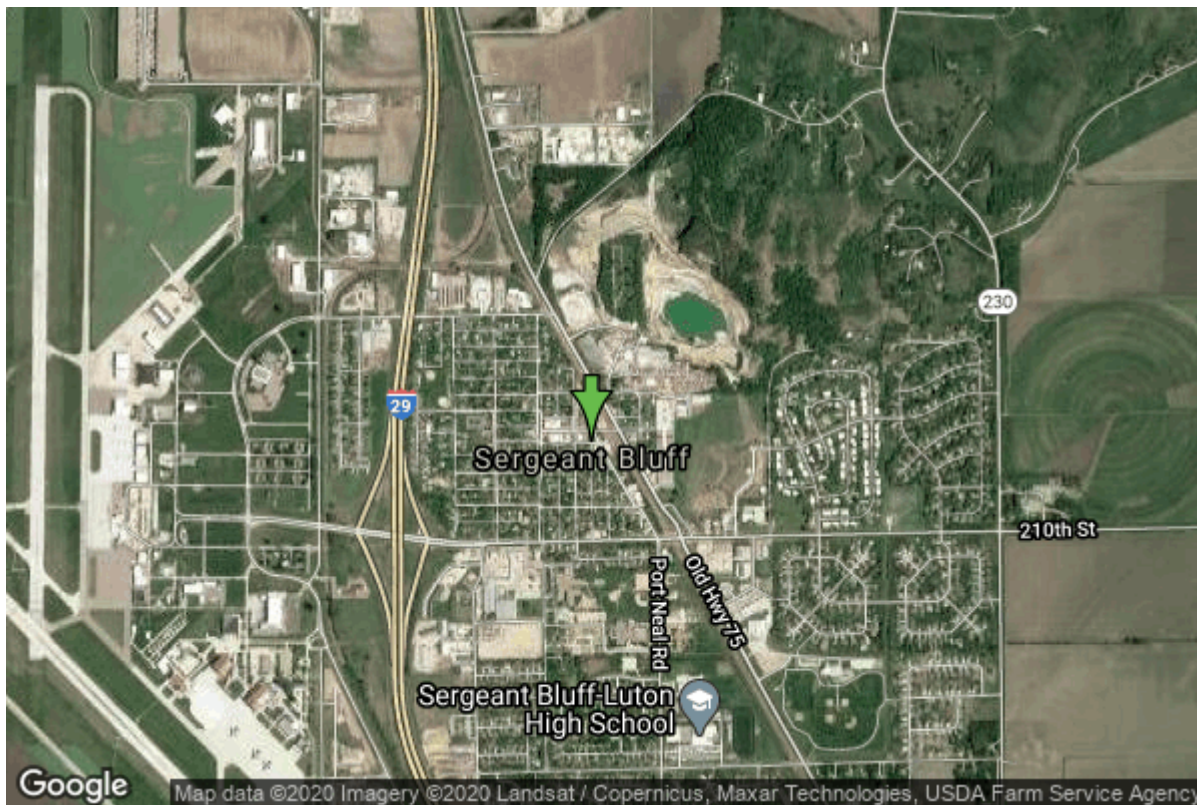


Well W#692 Information



Date Received		State	Iowa
Owner Name	Sergeant Bluff, City Of	County	Woodbury
Alt Name	#2	Quadrangle	Sergeant Bluff, Iowa
WNumber	692	Township	T88N
PWTS ID	0	Range	R47W
PWS ID	9774033	Section	30
Storet ID	0	Quarter	SE SW NE
SDWIS ID	0	Latitude	42.4034900000
USGS ID	0	Longitude	-96.3577170000
Project	Source Water Protection	Accuracy	
Operator	Unknown	UTM X	223671
		UTM Y	4700040

Site Type	Drilled hole	Drilling Company	Rasmussen, Carrol
Well Status	Not Used	Drilling Date	01/01/1938
Field Located	No	Drilling Method	Unknown
Elevation	1091 ft	Bedrock Depth	0 ft
Elevation Accuracy	Digital Elevation Model Accurate to 5 ft	Well Depth	455 ft
Landscape Position	Unknown	Total Depth	455 ft
		Well Types	Municipal
		Aquifers	Devonian

Casing Construction Information

Date	01/01/1938	Casing Type	Unknown
Start Depth	0.00 ft	End Depth	198.00 ft

Diameter	8.00 in	Amount	198.00 ft
Comments			
Date	01/01/1938	Casing Type	Unknown
Start Depth	0.00 ft	End Depth	376.00 ft
Diameter	6.00 in	Amount	0.00 ft
Comments			
Date	01/01/1938	Casing Type	Unknown
Start Depth	0.00 ft	End Depth	423.00 ft
Diameter	4.00 in	Amount	0.00 ft
Comments			

Log Information

Date			
Log Types	Unknown		
Prepared By	Unknown		
Comments			
Date			
Log Types	Strip log		
Prepared By	Unknown		
Comments			
Date			
Log Types	Strip log		
Prepared By	Carmody, R.A.		
Comments			

Stratigraphy Information

System	Quaternary		
Series			
Group			
Formation			
Member			
Submember			
Start Depth	0.00 ft	End Depth	30.00 ft
Contact Accuracy			
Penetration			
Primary Lithology		Percent	
Secondary Lithology		Percent	
Tertiary Lithology		Percent	
Comments			
System	Quaternary		

Series	Pleistocene Series		
Group	Wisconsinan Episode		
Formation	Noah Creek		
Member			
Submember			
Start Depth	30.00 ft	End Depth	105.00 ft
Contact Accuracy			
Penetration			
Primary Lithology	Sand And Gravel	Percent	100
Secondary Lithology	Unknown	Percent	0
Tertiary Lithology	Unknown	Percent	0
Comments			

System	Cretaceous		
Series			
Group	Fort Benton ("Lower Colorado ")		
Formation	Dakota		
Member	Woodbury		
Submember			
Start Depth	105.00 ft	End Depth	345.00 ft
Contact Accuracy			
Penetration			
Primary Lithology	Shale	Percent	0
Secondary Lithology	Sandstone	Percent	0
Tertiary Lithology		Percent	
Comments			

System	Cretaceous		
Series			
Group	Fort Benton ("Lower Colorado ")		
Formation	Dakota		
Member	Nishnabotna		
Submember			
Start Depth	345.00 ft	End Depth	355.00 ft
Contact Accuracy			
Penetration			
Primary Lithology	Sandstone	Percent	0
Secondary Lithology	Chert/Chalcedony	Percent	0
Tertiary Lithology		Percent	
Comments			

System	Devonian		
Series			
Group			
Formation			
Member			
Submember			
Start Depth	355.00 ft	End Depth	455.00 ft
Contact Accuracy			

Penetration			
Primary Lithology	Dolomite	Percent	0
Secondary Lithology	Chert/Chalcedony	Percent	0
Tertiary Lithology	Limestone	Percent	0
Comments			

Water Production Information

Date	01/01/1938	Start Time	
Aquifer	Unknown		
Static Water Level	1.00 ft	Yield	70 gallons per minute
Pumping Water Level	70 ft	Yield Method	Unknown
Measurement	Unknown	Pump Test	Yes
Pump Method	Unknown	Duration	0 mins
Comments			

Chip Storage Information

Date			
Storage	WD10-7	Bin	
Number of Boxes	1	Number of Samples	85
Sample Intervals	0	Sample Gaps	0-30
Sample Top	30 ft	Sample Bottom	455 ft
Washed Top	0 ft	Washed Bottom	0 ft
Duplicate Storage			
Comments			

<https://www.iihr.uiowa.edu/igs/geosam/well/692/general-information>