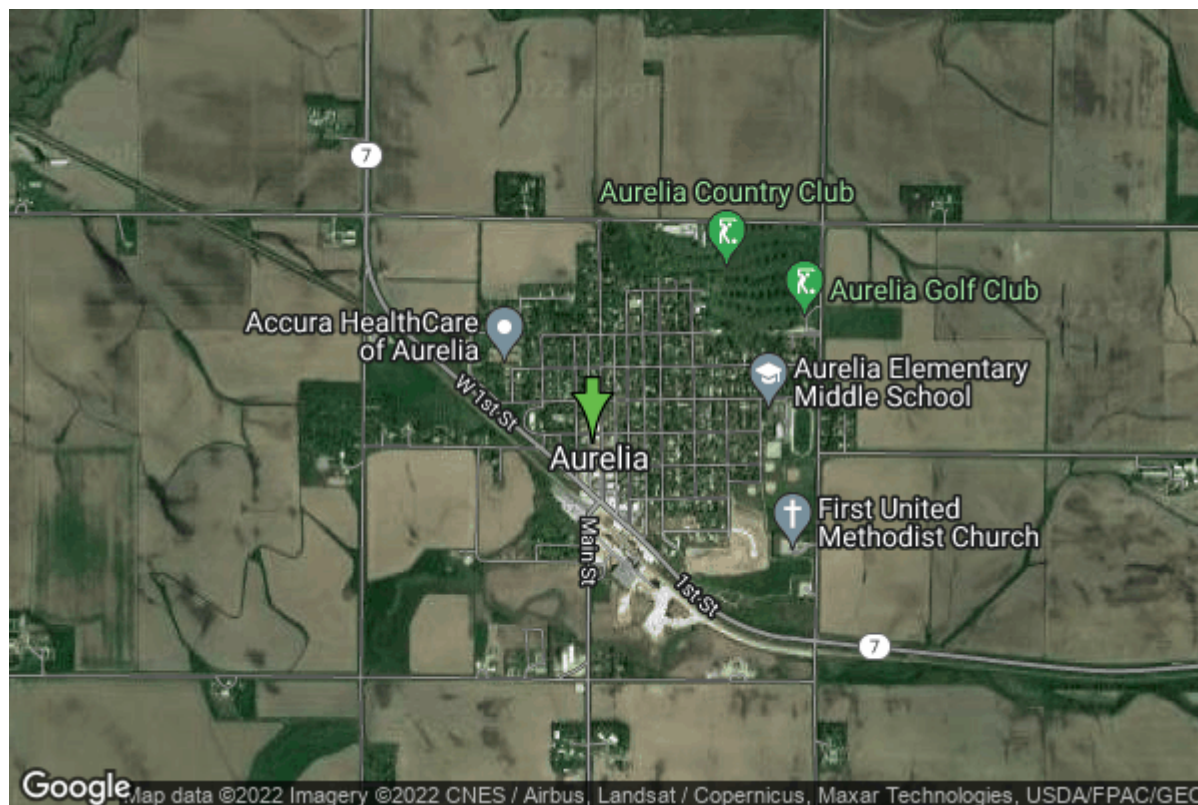


# Well W#696 Information



<b>Date Received</b>		<b>State</b>	Iowa
<b>Owner Name</b>	Aurelia, City Of	<b>County</b>	Cherokee
<b>Alt Name</b>	#2	<b>Quadrangle</b>	Aurelia, Iowa
<b>WNumber</b>	696	<b>Township</b>	T91N
<b>PWTS ID</b>	0	<b>Range</b>	R39W
<b>PWS ID</b>	1803079	<b>Section</b>	10
<b>Storet ID</b>	0	<b>Quarter</b>	NE SW SW
<b>SDWIS ID</b>	2408867	<b>Latitude</b>	42.7132300000
<b>USGS ID</b>	0	<b>Longitude</b>	-95.4362600000
<b>Project</b>	Source Water Protection	<b>Accuracy</b>	
<b>Operator</b>	Unknown	<b>UTM X</b>	300499
		<b>UTM Y</b>	4731848

<b>Site Type</b>	Drilled hole	<b>Drilling Company</b>	Rasmussen, Carrol
<b>Well Status</b>	Not Used	<b>Drilling Date</b>	12/01/1937
<b>Field Located</b>	No	<b>Drilling Method</b>	Unknown
<b>Elevation</b>	1392 ft	<b>Bedrock Depth</b>	180 ft
<b>Elevation Accuracy</b>	Digital Elevation Model Accurate to 5 ft	<b>Well Depth</b>	305 ft
<b>Landscape Position</b>	Hillside	<b>Total Depth</b>	305 ft
		<b>Well Types</b>	Municipal, Public Supply
		<b>Aquifers</b>	Dakota/Cretaceous

## Casing Construction Information

<b>Date</b>	11/01/1937	<b>Casing Type</b>	Steel
<b>Start Depth</b>	0.00 ft	<b>End Depth</b>	280.00 ft

<b>Diameter</b>	12.00 in	<b>Amount</b>	280.00 ft
<b>Comments</b>			
<b>Date</b>	11/01/1937	<b>Casing Type</b>	Steel
<b>Start Depth</b>	275.00 ft	<b>End Depth</b>	305.00 ft
<b>Diameter</b>	10.00 in	<b>Amount</b>	30.00 ft
<b>Comments</b>			
<b>Date</b>	11/01/1937	<b>Casing Type</b>	Perforated Steel
<b>Start Depth</b>	280.00 ft	<b>End Depth</b>	305.00 ft
<b>Diameter</b>	10.00 in	<b>Amount</b>	25.00 ft
<b>Comments</b>			
<b>Date</b>	11/01/1937	<b>Casing Type</b>	Perforated Steel
<b>Start Depth</b>	0.00 ft	<b>End Depth</b>	0.00 ft
<b>Diameter</b>	0.00 in	<b>Amount</b>	0.00 ft
<b>Comments</b>			

## Log Information

<b>Date</b>	12/10/1941		
<b>Log Types</b>	Strip log		
<b>Prepared By</b>	Milton, Arthur M.		
<b>Comments</b>			
<b>Date</b>	07/01/1939		
<b>Log Types</b>	Strip log		
<b>Prepared By</b>	Conselman, Milton		
<b>Comments</b>			
<b>Date</b>			
<b>Log Types</b>	Drillers log		
<b>Prepared By</b>	Aurelia, City Of		
<b>Comments</b>			

## Stratigraphy Information

<b>System</b>	Quaternary		
<b>Series</b>			
<b>Group</b>			
<b>Formation</b>			
<b>Member</b>			
<b>Submember</b>			
<b>Start Depth</b>	0.00 ft	<b>End Depth</b>	15.00 ft
<b>Contact Accuracy</b>			
<b>Penetration</b>			
<b>Primary Lithology</b>	Unknown	<b>Percent</b>	0

<b>Secondary Lithology</b>	Unknown	<b>Percent</b>	0
<b>Tertiary Lithology</b>	Unknown	<b>Percent</b>	0
<b>Comments</b>			

---

<b>System</b>	Quaternary		
<b>Series</b>	Pleistocene Series		
<b>Group</b>	Pre-Illinoian		
<b>Formation</b>			
<b>Member</b>			
<b>Submember</b>			
<b>Start Depth</b>	15.00 ft	<b>End Depth</b>	40.00 ft
<b>Contact Accuracy</b>			
<b>Penetration</b>			
<b>Primary Lithology</b>	Till - Unoxidized And Unleached	<b>Percent</b>	100
<b>Secondary Lithology</b>	Unknown	<b>Percent</b>	0
<b>Tertiary Lithology</b>	Unknown	<b>Percent</b>	0
<b>Comments</b>			

---

<b>System</b>	Quaternary		
<b>Series</b>	Pleistocene Series		
<b>Group</b>	Pre-Illinoian		
<b>Formation</b>			
<b>Member</b>			
<b>Submember</b>			
<b>Start Depth</b>	40.00 ft	<b>End Depth</b>	45.00 ft
<b>Contact Accuracy</b>			
<b>Penetration</b>			
<b>Primary Lithology</b>	Till - Oxidized And Unleached	<b>Percent</b>	100
<b>Secondary Lithology</b>		<b>Percent</b>	
<b>Tertiary Lithology</b>		<b>Percent</b>	
<b>Comments</b>			

---

<b>System</b>	Quaternary		
<b>Series</b>	Pleistocene Series		
<b>Group</b>	Pre-Illinoian		
<b>Formation</b>			
<b>Member</b>			
<b>Submember</b>			
<b>Start Depth</b>	45.00 ft	<b>End Depth</b>	120.00 ft
<b>Contact Accuracy</b>			
<b>Penetration</b>			
<b>Primary Lithology</b>	Till - Unoxidized And Unleached	<b>Percent</b>	100
<b>Secondary Lithology</b>		<b>Percent</b>	
<b>Tertiary Lithology</b>		<b>Percent</b>	
<b>Comments</b>			

---

<b>System</b>	Quaternary		
<b>Series</b>	Pleistocene Series		
<b>Group</b>	Pre-Illinoian		
<b>Formation</b>			
<b>Member</b>			
<b>Submember</b>			
<b>Start Depth</b>	120.00 ft	<b>End Depth</b>	125.00 ft
<b>Contact Accuracy</b>			
<b>Penetration</b>			
<b>Primary Lithology</b>	Sand And Gravel	<b>Percent</b>	100
<b>Secondary Lithology</b>		<b>Percent</b>	
<b>Tertiary Lithology</b>		<b>Percent</b>	
<b>Comments</b>			

---

<b>System</b>	Quaternary		
<b>Series</b>	Pleistocene Series		
<b>Group</b>	Pre-Illinoian		
<b>Formation</b>			
<b>Member</b>			
<b>Submember</b>			
<b>Start Depth</b>	125.00 ft	<b>End Depth</b>	180.00 ft
<b>Contact Accuracy</b>			
<b>Penetration</b>			
<b>Primary Lithology</b>	Till - Unoxidized And Unleached	<b>Percent</b>	100
<b>Secondary Lithology</b>		<b>Percent</b>	
<b>Tertiary Lithology</b>		<b>Percent</b>	
<b>Comments</b>			

---

<b>System</b>	Cretaceous		
<b>Series</b>			
<b>Group</b>	Fort Benton ("Lower Colorado ")		
<b>Formation</b>	Dakota		
<b>Member</b>	Woodbury		
<b>Submember</b>			
<b>Start Depth</b>	180.00 ft	<b>End Depth</b>	305.00 ft
<b>Contact Accuracy</b>			
<b>Penetration</b>			
<b>Primary Lithology</b>	Shale	<b>Percent</b>	0
<b>Secondary Lithology</b>	Siltstone	<b>Percent</b>	0
<b>Tertiary Lithology</b>	Sandstone	<b>Percent</b>	0
<b>Comments</b>			

---

<b>System</b>	Cretaceous		
<b>Series</b>			
<b>Group</b>	Fort Benton ("Lower Colorado ")		
<b>Formation</b>	Dakota		
<b>Member</b>	Nishnabotna		

<b>Submember</b>			
<b>Start Depth</b>	278.00 ft	<b>End Depth</b>	305.00 ft
<b>Contact Accuracy</b>			
<b>Penetration</b>			
<b>Primary Lithology</b>	Sandstone	<b>Percent</b>	100
<b>Secondary Lithology</b>		<b>Percent</b>	
<b>Tertiary Lithology</b>		<b>Percent</b>	
<b>Comments</b>			

## Water Production Information

<b>Date</b>	11/01/1937	<b>Start Time</b>	
<b>Aquifer</b>	Unknown		
<b>Static Water Level</b>	205.00 ft	<b>Yield</b>	300 gallons per minute
<b>Pumping Water Level</b>	242 ft	<b>Yield Method</b>	Unknown
<b>Measurement</b>	Unknown	<b>Pump Test</b>	No
<b>Pump Method</b>	Unknown	<b>Duration</b>	0 mins
<b>Comments</b>			

## Chip Storage Information

<b>Date</b>		<b>Bin</b>	
<b>Storage</b>	WD10-9	<b>Number of Samples</b>	60
<b>Number of Boxes</b>	1	<b>Sample Gaps</b>	0-15
<b>Sample Intervals</b>	0	<b>Sample Bottom</b>	305 ft
<b>Sample Top</b>	15 ft	<b>Washed Bottom</b>	305 ft
<b>Washed Top</b>	115 ft		
<b>Duplicate Storage</b>	WS: CD14-1		
<b>Comments</b>			

<https://www.iihr.uiowa.edu/igs/geosam/well/696/general-information>