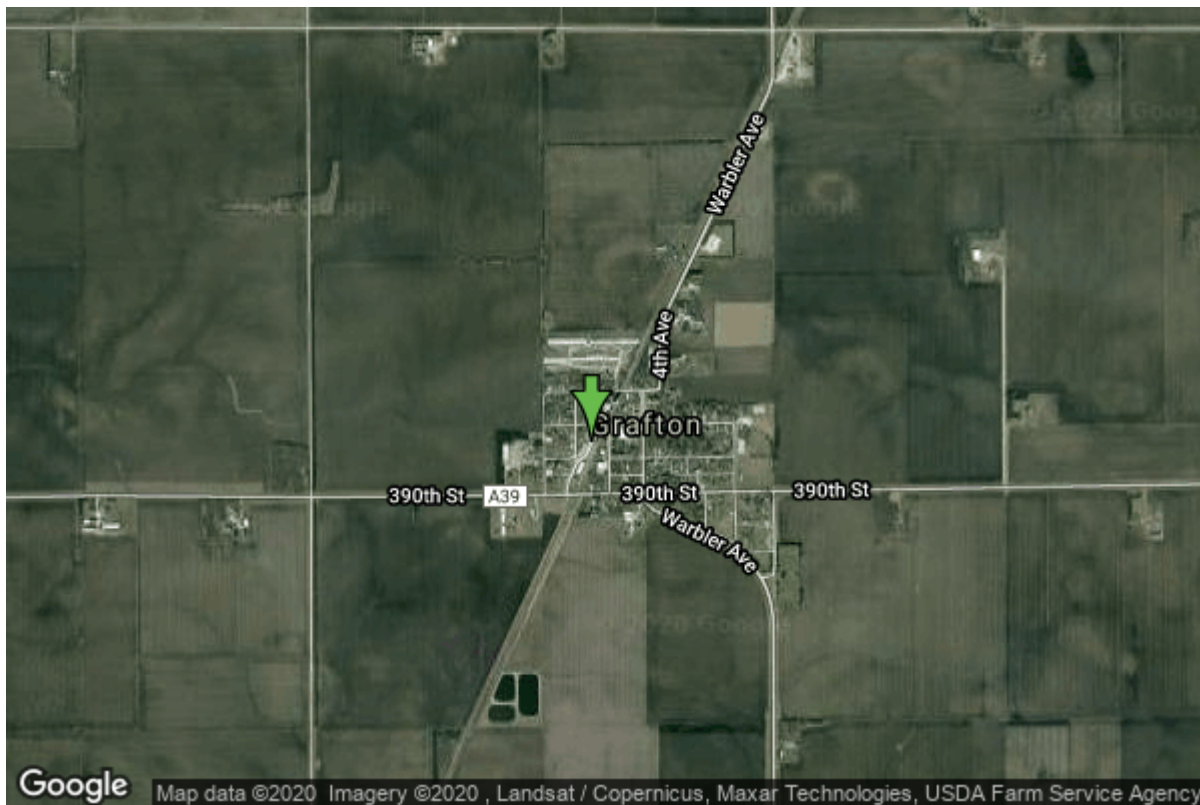


Well W#700 Information



Date Received		State	Iowa
Owner Name	Grafton, City Of	County	Worth
Alt Name	#1	Quadrangle	Grafton, Iowa
WNumber	700	Township	T98N
PWTS ID	0	Range	R19W
PWS ID	9825097	Section	3
Storet ID	0	Quarter	SE SW SE
SDWIS ID	2409140	Latitude	43.3294100000
USGS ID	0	Longitude	-93.0709900000
Project	Source Water Protection	Accuracy	
Operator	Unknown	UTM X	494245
		UTM Y	4797399

Site Type	Drilled hole	Drilling Company	Thorpe Well Co.
Well Status	Standby	Drilling Date	01/04/1938
Field Located	No	Drilling Method	Unknown
Elevation	1228 ft	Bedrock Depth	0 ft
Elevation Accuracy	Digital Elevation Model Accurate to 5 ft	Well Depth	173 ft
Landscape Position	Unknown	Total Depth	172 ft
		Well Types	Municipal, Public Supply
		Aquifers	Devonian

Log Information

Date	05/27/1942
Log Types	Strip log

Prepared By Carrier, J.B.
Comments

Date 01/01/1939
Log Types Strip log
Prepared By Carmody, R.A.
Comments

Date 01/29/1938
Log Types Pump Test
Prepared By
Comments 2.5 hour test

Date 01/07/1938
Log Types Pump Test
Prepared By Thorpe Well Co.
Comments 8 hour test

Date
Log Types Unknown
Prepared By
Comments

Date
Log Types Drillers log
Prepared By
Comments

Stratigraphy Information

System Quaternary
Series Pleistocene Series
Group
Formation
Member
Submember
Start Depth 0.00 ft **End Depth** 50.00 ft
Contact Accuracy
Penetration
Primary Lithology Clay **Percent** 0
Secondary Lithology Silt **Percent** 0
Tertiary Lithology **Percent**
Comments

System Unknown
Series
Group

Formation			
Member			
Submember			
Start Depth	50.00 ft	End Depth	172.00 ft
Contact Accuracy			
Penetration			
Primary Lithology	Dolomite	Percent	0
Secondary Lithology	Shale	Percent	0
Tertiary Lithology	Sand	Percent	0
Comments			

Chip Storage Information

Date			
Storage	WE1-1	Bin	
Number of Boxes	1	Number of Samples	33
Sample Intervals	0	Sample Gaps	
Sample Top	0 ft	Sample Bottom	170 ft
Washed Top	0 ft	Washed Bottom	0 ft
Duplicate Storage			
Comments			

<https://www.iihr.uiowa.edu/igs/geosam/well/700/general-information>