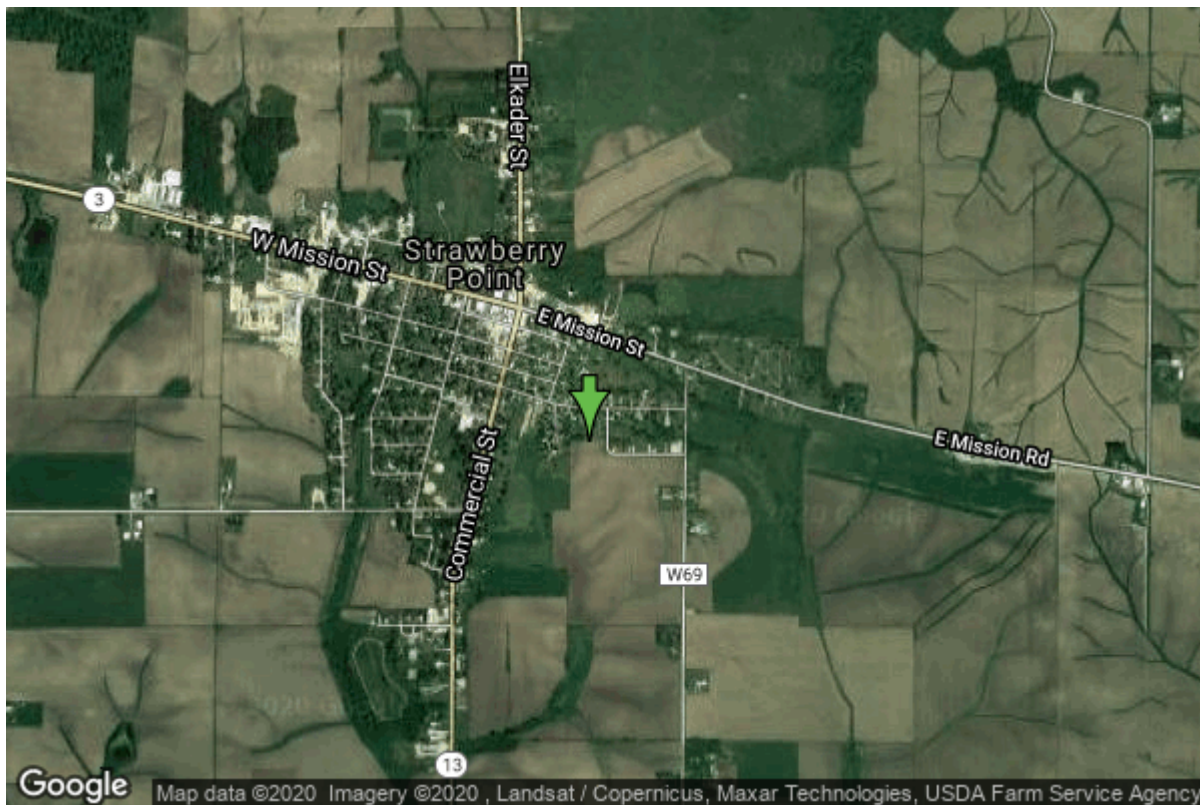


# Well W#7207 Information



<b>Date Received</b>		<b>State</b>	Iowa
<b>Owner Name</b>	Strawberry Point, City Of	<b>County</b>	Clayton
<b>Alt Name</b>	#3	<b>Quadrangle</b>	Strawberry Point, Iowa
<b>WNumber</b>	7207	<b>Township</b>	T91N
<b>PWTS ID</b>	0	<b>Range</b>	R6W
<b>PWS ID</b>	2279003	<b>Section</b>	22
<b>Storet ID</b>	0	<b>Quarter</b>	SE NE NW
<b>SDWIS ID</b>	2410693	<b>Latitude</b>	42.6792000000
<b>USGS ID</b>	0	<b>Longitude</b>	-91.5305700000
<b>Project Operator</b>	Source Water Protection Unknown	<b>Accuracy</b>	
		<b>UTM X</b>	620393
		<b>UTM Y</b>	4726238
<hr/>			
<b>Site Type</b>	Drilled hole	<b>Drilling Company</b>	Hoeg & Ames (H.M. White)
<b>Well Status</b>	Active	<b>Drilling Date</b>	07/01/1955
<b>Field Located</b>	No	<b>Drilling Method</b>	Cable
<b>Elevation</b>	1202 ft	<b>Bedrock Depth</b>	133 ft
<b>Elevation Accuracy</b>	Digital Elevation Model Accurate to 5 ft	<b>Well Depth</b>	259 ft
<b>Landscape Position</b>	Unknown	<b>Total Depth</b>	259 ft
		<b>Well Types</b>	Municipal, Public Supply
		<b>Aquifers</b>	Silurian

# Casing Construction Information

<b>Date</b>	07/01/1955	<b>Casing Type</b>	Steel
<b>Start Depth</b>	0.00 ft	<b>End Depth</b>	20.00 ft
<b>Diameter</b>	16.00 in	<b>Amount</b>	20.00 ft
<b>Comments</b>			

---

<b>Date</b>	07/01/1955	<b>Casing Type</b>	Steel
<b>Start Depth</b>	0.00 ft	<b>End Depth</b>	135.80 ft
<b>Diameter</b>	12.00 in	<b>Amount</b>	135.80 ft
<b>Comments</b>			

---

<b>Date</b>	07/01/1955	<b>Casing Type</b>	Steel
<b>Start Depth</b>	0.00 ft	<b>End Depth</b>	157.80 ft
<b>Diameter</b>	10.00 in	<b>Amount</b>	157.80 ft
<b>Comments</b>			

# Grout Construction Information

<b>Date</b>	07/01/1955	<b>Grout Type</b>	Cement	<b>Grout Placement</b>	Unknown
<b>Start Depth</b>	0.00 ft	<b>End Depth</b>			20.00 ft
<b>Comments</b>					

# Pump Construction Information

<b>Date</b>	07/01/1955	<b>Pump Type</b>	Turbine
<b>Diameter</b>	0.00 in	<b>Rating</b>	0
<b>Depth Intake</b>	245.00 ft		
<b>Comments</b>			

# Log Information

<b>Date</b>	10/20/1955
<b>Log Types</b>	Strip log
<b>Prepared By</b>	Unknown
<b>Comments</b>	

---

<b>Date</b>	
<b>Log Types</b>	Drillers log
<b>Prepared By</b>	Strawberry Point, City Of
<b>Comments</b>	

# Stratigraphy Information

**System** Quaternary  
**Series** Pleistocene Series  
**Group** Pre-Illinoian  
**Formation**  
**Member**  
**Submember**  
**Start Depth** 0.00 ft **End Depth** 135.00 ft  
**Contact Accuracy**  
**Penetration**  
**Primary Lithology** Till **Percent** 100  
**Secondary Lithology** **Percent**  
**Tertiary Lithology** **Percent**  
**Comments**

---

**System** Silurian  
**Series**  
**Group**  
**Formation**  
**Member**  
**Submember**  
**Start Depth** 135.00 ft **End Depth** 225.00 ft  
**Contact Accuracy**  
**Penetration**  
**Primary Lithology** Dolomite **Percent** 0  
**Secondary Lithology** Chert/Chalcedony **Percent** 0  
**Tertiary Lithology** **Percent**  
**Comments**

---

**System** Silurian  
**Series**  
**Group**  
**Formation** Mosalem  
**Member**  
**Submember**  
**Start Depth** 225.00 ft **End Depth** 259.00 ft  
**Contact Accuracy**  
**Penetration**  
**Primary Lithology** Dolomite **Percent** 0  
**Secondary Lithology** Sandstone **Percent** 0  
**Tertiary Lithology** Shale **Percent** 0  
**Comments**

## Water Production Information

<b>Date</b>	07/01/1955	<b>Start Time</b>	
<b>Aquifer</b>	Unknown		
<b>Static Water Level</b>	130.00 ft	<b>Yield</b>	280 gallons per minute
<b>Pumping Water Level</b>	160 ft	<b>Yield Method</b>	Unknown
<b>Measurement</b>	Unknown	<b>Pump Test</b>	Yes
<b>Pump Method</b>	Unknown	<b>Duration</b>	0 mins
<b>Comments</b>			

## Chip Storage Information

<b>Date</b>	07/18/1955		
<b>Storage</b>	EG10-1,2	<b>Bin</b>	
<b>Number of Boxes</b>	2	<b>Number of Samples</b>	51
<b>Sample Intervals</b>	5	<b>Sample Gaps</b>	
<b>Sample Top</b>	0 ft	<b>Sample Bottom</b>	255 ft
<b>Washed Top</b>	135 ft	<b>Washed Bottom</b>	255 ft
<b>Duplicate Storage</b>			
<b>Comments</b>			

<https://www.iuhr.uiowa.edu/igs/geosam/well/7207/general-information>