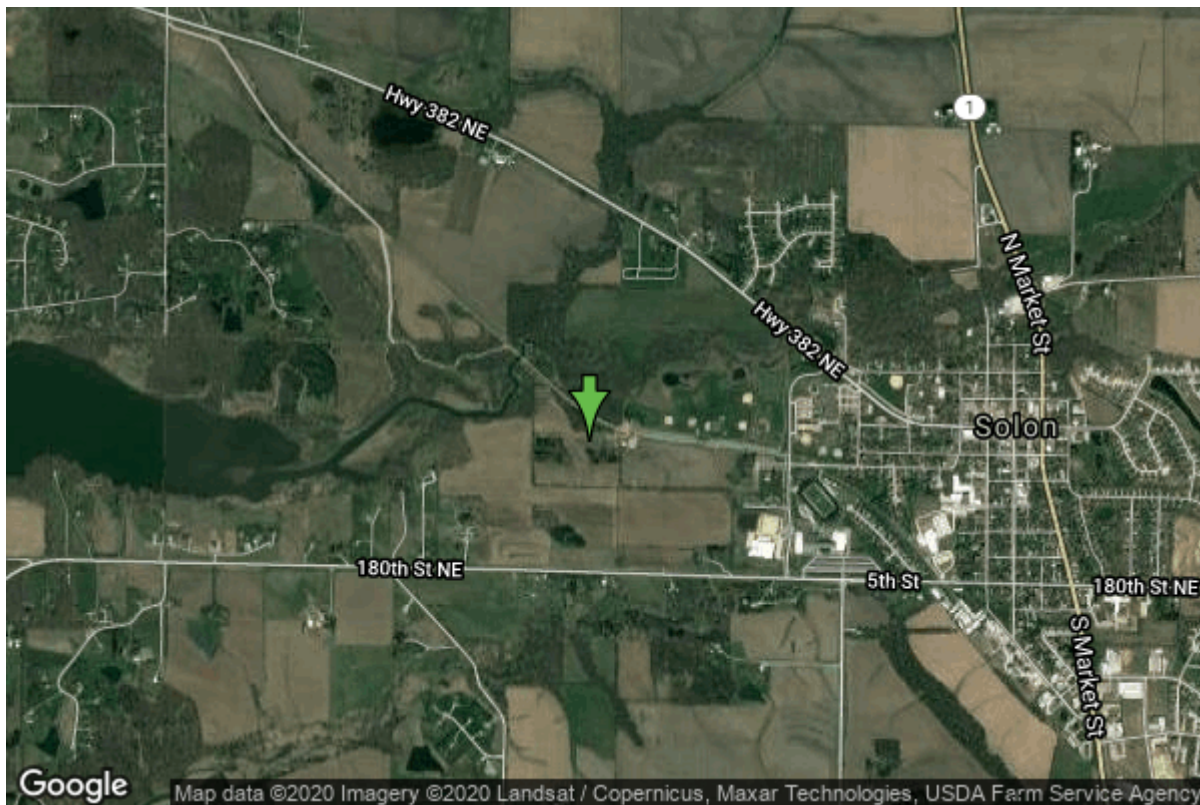


# Well W#73173 Information



<b>Date Received</b>		<b>State</b>	Iowa
<b>Owner Name</b>	Solon, City Of #4 Test (Nature & Rec. Park)	<b>County</b>	Johnson
<b>Alt Name</b>	#4 (Nature & Rec. Park)	<b>Quadrangle</b>	Ely, Iowa
<b>WNumber</b>	73173	<b>Township</b>	T81N
<b>PWTS ID</b>	0	<b>Range</b>	R6W
<b>PWS ID</b>	5282062	<b>Section</b>	23
<b>Storet ID</b>	0	<b>Quarter</b>	SW NE SE
<b>SDWIS ID</b>	2588501	<b>Latitude</b>	41.8066700000
<b>USGS ID</b>	0	<b>Longitude</b>	-91.5116640000
<b>Project</b>	Source Water Protection	<b>Accuracy</b>	
<b>Operator</b>	Unknown	<b>UTM X</b>	623634
		<b>UTM Y</b>	4629382

<b>Site Type</b>	Drilled hole	<b>Drilling Company</b>	Gingerich Well Co.
<b>Well Status</b>	Active	<b>Drilling Date</b>	08/18/2010
<b>Field Located</b>	No	<b>Drilling Method</b>	Rotary
<b>Elevation</b>	734 ft	<b>Bedrock Depth</b>	60 ft
<b>Elevation Accuracy</b>	Digital Elevation Model Accurate to 5 ft	<b>Well Depth</b>	390 ft
<b>Landscape Position</b>	Level Surface	<b>Total Depth</b>	390 ft
		<b>Well Types</b>	Public Supply
		<b>Aquifers</b>	Silurian

## Hole Construction Information

<b>Date</b>	08/18/2010	<b>Depth</b>	60.00 ft
<b>Diameter</b>	24.00 in		

## Comments

---

Date	08/18/2010	Depth	178.00 ft
Diameter	10.00 in		
Comments			

---

Date	08/18/2010	Depth	390.00 ft
Diameter	6.25 in		
Comments			

## Casing Construction Information

Date	08/18/2010	Casing Type	Steel
Start Depth	0.00 ft	End Depth	60.00 ft
Diameter	18.00 in	Amount	0.00 ft
Comments	steel .375		

---

Date	08/18/2010	Casing Type	Steel
Start Depth	-1.00 ft	End Depth	38.00 ft
Diameter	10.00 in	Amount	39.00 ft
Comments	steel .365		

---

Date	08/18/2010	Casing Type	Steel
Start Depth	-1.00 ft	End Depth	178.00 ft
Diameter	7.00 in	Amount	179.00 ft
Comments	7 OD steel .317		

## Grout Construction Information

Date	08/18/2010	Grout Placement	Tremie
Grout Type	Bentonite (Clay)	End Depth	178.00 ft
Start Depth	60.00 ft		
Comments	log says 0-178 feet 25 bags benseal		

---

Date	08/18/2010	Grout Placement	Tremie
Grout Type	Cement	End Depth	60.00 ft
Start Depth	0.00 ft		
Comments	cement 120 sacks		

## Log Information

Date	08/18/2010
Log Types	Drillers log
Prepared By	Gingerich Well
Comments	

# Water Production Information

<b>Date</b>	10/18/2010	<b>Start Time</b>	10:00
<b>Aquifer</b>	Silurian		
<b>Static Water Level</b>	20.00 ft	<b>Yield</b>	252 gallons per minute
<b>Pumping Water Level</b>	196 ft	<b>Yield Method</b>	Orifice
<b>Measurement</b>	Tape	<b>Pump Test</b>	Yes
<b>Pump Method</b>	Pumped	<b>Duration</b>	1800 mins
<b>Comments</b>	do not know methods, just guessed		

---

<b>Date</b>		<b>Start Time</b>	
<b>Aquifer</b>	Unknown		
<b>Static Water Level</b>	0.00 ft	<b>Yield</b>	0 gallons per minute
<b>Pumping Water Level</b>	0 ft	<b>Yield Method</b>	Unknown
<b>Measurement</b>	Unknown	<b>Pump Test</b>	No
<b>Pump Method</b>	Unknown	<b>Duration</b>	0 mins
<b>Comments</b>			

# Chip Storage Information

<b>Date</b>	10/20/2010		
<b>Storage</b>	OD6-086>087	<b>Bin</b>	
<b>Number of Boxes</b>	2	<b>Number of Samples</b>	75
<b>Sample Intervals</b>	5	<b>Sample Gaps</b>	35-50
<b>Sample Top</b>	0 ft	<b>Sample Bottom</b>	390 ft
<b>Washed Top</b>	60 ft	<b>Washed Bottom</b>	390 ft
<b>Duplicate Storage</b>			
<b>Comments</b>			

<https://www.iuhr.uiowa.edu/igs/geosam/well/73173/general-information>