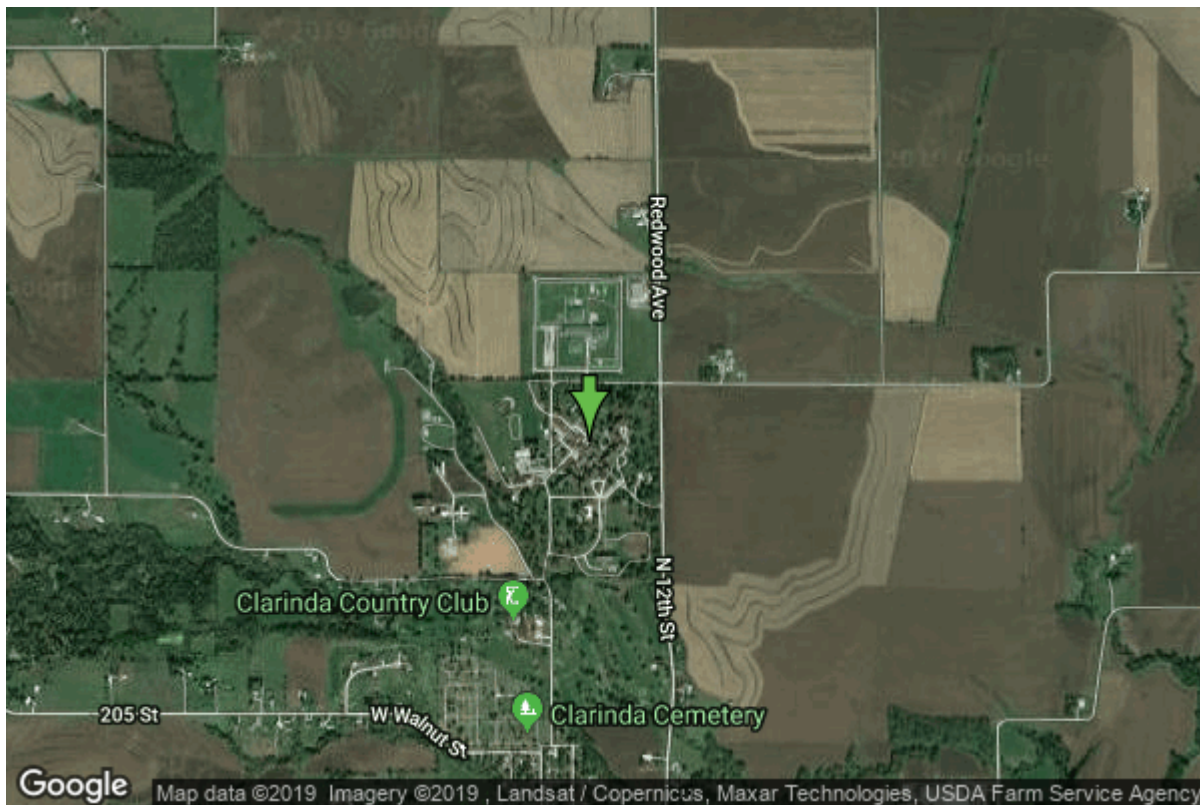


Well W#74124 Information



Date Received	01/12/2012	State	Iowa
Owner Name	Clarinda Treatment Complex	County	Page
Alt Name	#6	Quadrangle	Clarinda North, Iowa
WNumber	74124	Township	T69N
PWTS ID	0	Range	R36W
PWS ID	7329501	Section	19
Storet ID	0	Quarter	SW SE SE
SDWIS ID	2588766	Latitude	40.7584630000
USGS ID	0	Longitude	-95.0351120000
Project	Source Water Protection	Accuracy	
Operator	Unknown	UTM X	328215
		UTM Y	4513937

Site Type	Drilled hole	Drilling Company	Northway Well & Pump Company
Well Status	Active	Drilling Date	02/15/2011
Field Located	No	Drilling Method	Unknown
Elevation	1050 ft	Bedrock Depth	0 ft
Elevation Accuracy	Digital Elevation Model Accurate to 5 ft	Well Depth	77 ft
Landscape Position	Level Surface	Total Depth	77 ft
		Well Types	Public Supply
		Aquifers	Pleistocene

Hole Construction Information

Date	02/15/2011		
Diameter	17.50 in	Depth	77.00 ft
Comments			

Casing Construction Information

Date	02/15/2011	Casing Type	Steel
Start Depth	-2.00 ft	End Depth	67.00 ft
Diameter	12.00 in	Amount	69.00 ft
Comments			

Screen Construction Information

Date	02/15/2011		
Screen Type	Steel	Slot Size	0.08
Start Depth	67.00 ft	End Depth	77.00 ft
Diameter	12.00 in	Amount	10 ft
Comments			

Grout Construction Information

Date	02/15/2011		
Grout Type	Unknown	Grout Placement	Tremie
Start Depth	6.00 ft	End Depth	45.00 ft
Comments			

Gravel Pack Construction Information

Date	02/15/2011		
Gravel Pack Type	Northern Gravel	Slot Size	
Start Depth	55.00 ft	End Depth	77.00 ft
Comments			

Pump Construction Information

Date	02/15/2011	Pump Type	Submersible
Diameter	6.00 in	Rating	90
Depth Intake	69.00 ft		
Comments			

Log Information

Date	
Log Types	Drillers log
Prepared By	Unknown
Comments	

Water Production Information

Date	02/15/2011	Start Time	19:00
Aquifer	Unknown	Yield	110 gallons per minute
Static Water Level	44.00 ft	Yield Method	Orifice
Pumping Water Level	65 ft	Pump Test	No
Measurement	Airline	Duration	480 mins
Pump Method	Airlifted		
Comments			

<https://www.ihr.uiowa.edu/igs/geosam/well/74124/general-information>