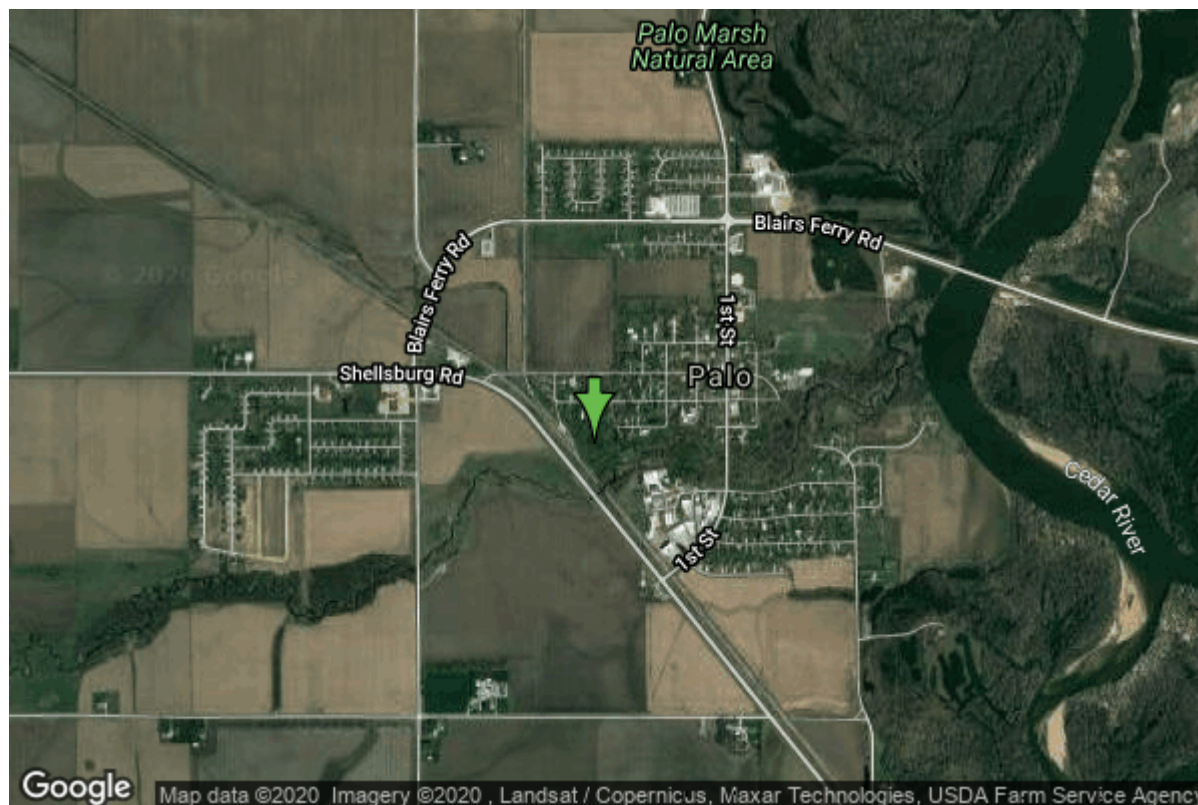


# Well W#74886 Information



<b>Date Received</b>		<b>State</b>	Iowa
<b>Owner Name</b>	Palo, City Of	<b>County</b>	Linn
<b>Alt Name</b>	#2	<b>Quadrangle</b>	Shellsburg, Iowa
<b>WNumber</b>	74886	<b>Township</b>	T84N
<b>PWTS ID</b>	0	<b>Range</b>	R8W
<b>PWS ID</b>	5765101	<b>Section</b>	29
<b>Storet ID</b>	0	<b>Quarter</b>	NE NW SE
<b>SDWIS ID</b>	2589130	<b>Latitude</b>	42.0638590000
<b>USGS ID</b>	0	<b>Longitude</b>	-91.8007720000
<b>Project</b>	Source Water Protection	<b>Accuracy</b>	
<b>Operator</b>	Unknown	<b>UTM X</b>	599219
		<b>UTM Y</b>	4657562

<b>Site Type</b>	Drilled hole	<b>Drilling Company</b>	Shawver Well Co.
<b>Well Status</b>	Primary	<b>Drilling Date</b>	01/25/2012
<b>Field Located</b>	No	<b>Drilling Method</b>	Rotary
<b>Elevation</b>	746 ft	<b>Bedrock Depth</b>	80 ft
<b>Elevation Accuracy</b>	Digital Elevation Model Accurate to 5 ft	<b>Well Depth</b>	425 ft
<b>Landscape Position</b>	Unknown	<b>Total Depth</b>	425 ft
		<b>Well Types</b>	Municipal, Public Supply
		<b>Aquifers</b>	

## Hole Construction Information

<b>Date</b>	01/25/2012	<b>Depth</b>	15.00 ft
<b>Diameter</b>	26.00 in		

## Comments

---

Date	01/25/2012	Depth	82.00 ft
Diameter	22.00 in		
Comments			

---

Date	01/25/2012	Depth	285.00 ft
Diameter	15.00 in		
Comments			

---

Date	01/25/2012	Depth	425.00 ft
Diameter	9.75 in		
Comments			

## Casing Construction Information

---

Date	01/25/2012	Casing Type	Steel
Start Depth	-1.00 ft	End Depth	82.00 ft
Diameter	18.00 in	Amount	83.00 ft
Comments			

---

Date	01/25/2012	Casing Type	Steel
Start Depth	-1.00 ft	End Depth	285.00 ft
Diameter	10.00 in	Amount	286.00 ft
Comments			

## Grout Construction Information

Date	01/25/2012	Grout Placement	Unknown
Grout Type	Neat Cement	End Depth	425.00 ft
Start Depth	0.00 ft		
Comments			

## Log Information

Date	
Log Types	Drillers log
Prepared By	Unknown
Comments	

## Water Production Information

Date	01/25/2012	Start Time	
Aquifer	Unknown		
Static Water Level	9.00 ft	Yield	200 gallons per minute

<b>Pumping Water Level</b>	0 ft	<b>Yield Method</b>	Estimate
<b>Measurement</b>	Electric Line	<b>Pump Test</b>	No
<b>Pump Method</b>	Unknown	<b>Duration</b>	0 mins
<b>Comments</b>			

## Chip Storage Information

<b>Date</b>	07/17/2012	<b>Bin</b>	
<b>Storage</b>	OD6-422>423	<b>Number of Samples</b>	82
<b>Number of Boxes</b>	2	<b>Sample Gaps</b>	0-15
<b>Sample Intervals</b>	5	<b>Sample Bottom</b>	425 ft
<b>Sample Top</b>	15 ft	<b>Washed Bottom</b>	425 ft
<b>Washed Top</b>	80 ft		
<b>Duplicate Storage</b>			
<b>Comments</b>			

<https://www.iihr.uiowa.edu/igs/geosam/well/74886/general-information>