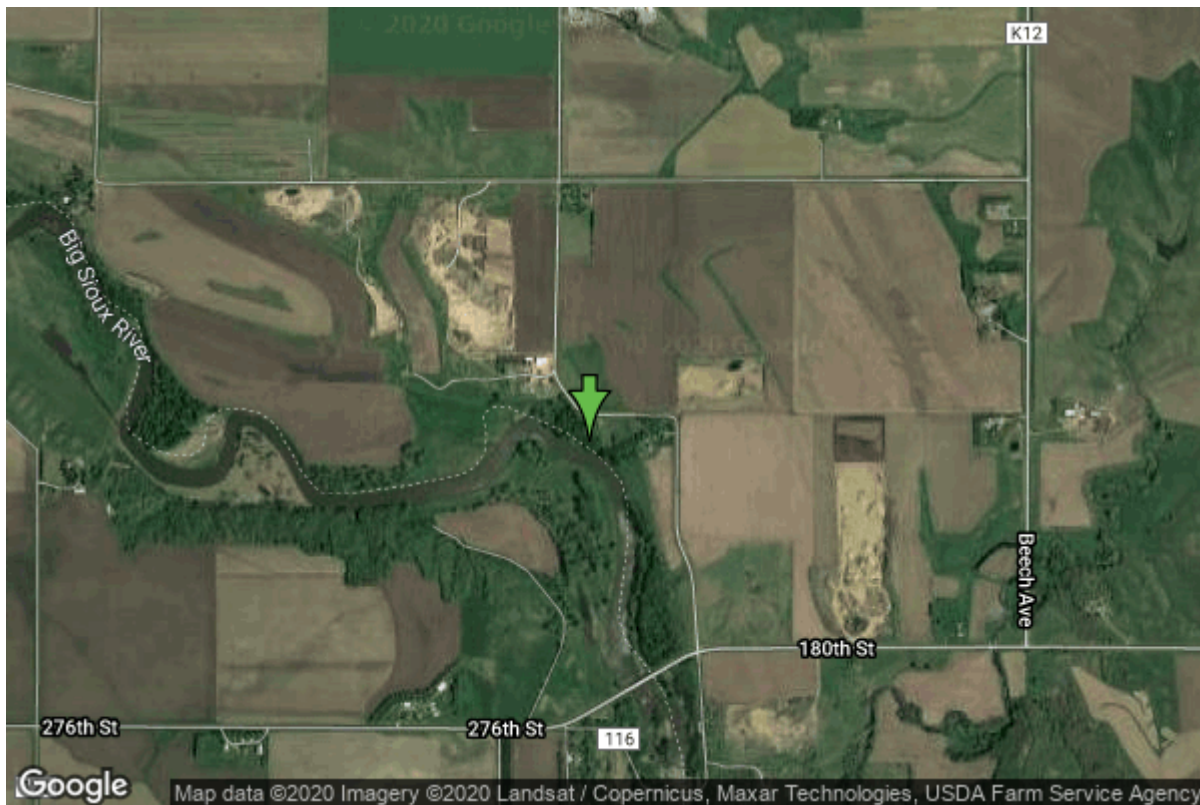


Well W#75082 Information



Date Received	09/11/2012	State	Iowa
Owner Name	Lyon & Sioux Rw	County	Lyon
Alt Name		Quadrangle	Klondike, Iowa-S. Dak.
WNumber	75082	Township	T99N
PWTS ID	0	Range	R48W
PWS ID	6000755	Section	16
Storet ID	0	Quarter	SE NW NW NE SW
SDWIS ID	0	Latitude	43.3966140000
USGS ID	0	Longitude	-96.5249760000
Project	Unknown	Accuracy	
Operator	Unknown	UTM X	214530
		UTM Y	4810897

Site Type	Drilled hole	Drilling Company	Lacey Well Drilling
Well Status	Primary	Drilling Date	08/30/2012
Field Located	No	Drilling Method	Other
Elevation	1270 ft	Bedrock Depth	0 ft
Elevation Accuracy	Topo Map Accurate to 2 ft	Well Depth	51 ft
Landscape Position	Valley	Total Depth	51 ft
		Well Types	Public Supply
		Aquifers	

Hole Construction Information

Date	08/30/2012	Depth	51.00 ft
Diameter	20.00 in		

Comments

Casing Construction Information

Date	08/30/2012	Casing Type	Steel
Start Depth	4.70 ft	End Depth	51.00 ft
Diameter	12.00 in	Amount	46.30 ft
Comments			

Screen Construction Information

Date	08/30/2012	Slot Size	0.10
Screen Type	Steel	End Depth	51.00 ft
Start Depth	43.00 ft	Amount	8 ft
Diameter	12.00 in		
Comments			

Grout Construction Information

Date	08/30/2012	Grout Placement	Tremie
Grout Type	Bentonite (Clay)	End Depth	30.00 ft
Start Depth	25.00 ft		
Comments			

Date	08/30/2012	Grout Placement	Tremie
Grout Type	Cement	End Depth	25.00 ft
Start Depth	6.00 ft		
Comments			

Gravel Pack Construction Information

Date	08/30/2012	Slot Size	
Gravel Pack Type	Unknown	End Depth	51.00 ft
Start Depth	30.00 ft		
Comments			

Log Information

Date	
Log Types	Drillers log
Prepared By	Unknown
Comments	

Water Production Information

Date	08/20/2012	Start Time	15:00
Aquifer	Unknown		
Static Water Level	25.00 ft	Yield	800 gallons per minute
Pumping Water Level	45 ft	Yield Method	Unknown
Measurement	Unknown	Pump Test	Yes
Pump Method	Pumped	Duration	60 mins
Comments			

<https://www.iihr.uiowa.edu/igs/geosam/well/75082/general-information>