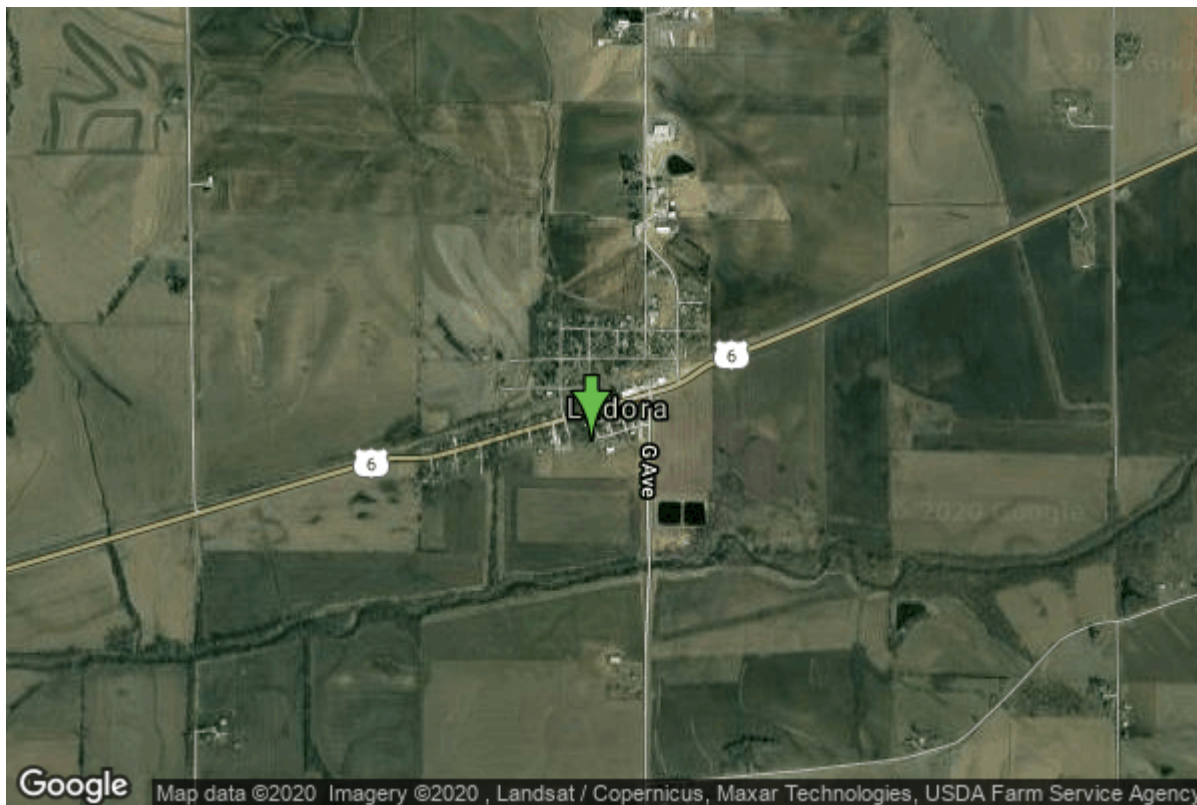


# Well W#75562 Information



<b>Date Received</b>	11/01/2012	<b>State</b>	Iowa
<b>Owner Name</b>	Ladora, City Of	<b>County</b>	Iowa
<b>Alt Name</b>	#3	<b>Quadrangle</b>	Ladora, Iowa
<b>WNumber</b>	75562	<b>Township</b>	T80N
<b>PWTS ID</b>	0	<b>Range</b>	R12W
<b>PWS ID</b>	4840042	<b>Section</b>	12
<b>Storet ID</b>	0	<b>Quarter</b>	NE SE
<b>SDWIS ID</b>	2589231	<b>Latitude</b>	41.7536640000
<b>USGS ID</b>	0	<b>Longitude</b>	-92.1839370000
<b>Project</b>	Source Water Protection	<b>Accuracy</b>	
<b>Operator</b>	Unknown	<b>UTM X</b>	567845
		<b>UTM Y</b>	4622748

---

<b>Site Type</b>	Drilled hole	<b>Drilling Company</b>	Northway Well & Pump Company
<b>Well Status</b>	Primary	<b>Drilling Date</b>	11/14/2012
<b>Field Located</b>	No	<b>Drilling Method</b>	Unknown
<b>Elevation</b>	770 ft	<b>Bedrock Depth</b>	72 ft
<b>Elevation Accuracy</b>	Digital Elevation Model Accurate to 5 ft	<b>Well Depth</b>	73 ft
<b>Landscape Position</b>	Level Surface	<b>Total Depth</b>	73 ft
		<b>Well Types</b>	Municipal, Public Supply
		<b>Aquifers</b>	

## Hole Construction Information

Date	11/14/2012		
Diameter	24.00 in	Depth	73.00 ft
Comments			

## Casing Construction Information

Date	11/14/2012	Casing Type	PVC
Start Depth	-1.50 ft	End Depth	62.00 ft
Diameter	10.00 in	Amount	63.50 ft
Comments			

## Screen Construction Information

Date	11/14/2012		
Screen Type	Steel	Slot Size	0.06
Start Depth	62.00 ft	End Depth	72.00 ft
Diameter	10.00 in	Amount	10 ft
Comments			

## Grout Construction Information

Date	11/14/2012		
Grout Type	Neat Cement	Grout Placement	Unknown
Start Depth	6.50 ft	End Depth	31.00 ft
Comments			

## Gravel Pack Construction Information

Date	11/14/2012		
Gravel Pack Type	Unknown	Slot Size	
Start Depth	42.00 ft	End Depth	72.00 ft
Comments			

## Log Information

Date	
Log Types	Drillers log
Prepared By	Unknown
Comments	

## Water Production Information

<b>Date</b>	11/15/2012	<b>Start Time</b>	
<b>Aquifer</b>	Unknown		
<b>Static Water Level</b>	37.00 ft	<b>Yield</b>	100 gallons per minute
<b>Pumping Water Level</b>	47 ft	<b>Yield Method</b>	Unknown
<b>Measurement</b>	Electric Line	<b>Pump Test</b>	No
<b>Pump Method</b>	Unknown	<b>Duration</b>	0 mins
<b>Comments</b>			

## Chip Storage Information

<b>Date</b>	02/08/2013		
<b>Storage</b>	OD6-490>491	<b>Bin</b>	
<b>Number of Boxes</b>	2	<b>Number of Samples</b>	16
<b>Sample Intervals</b>	0	<b>Sample Gaps</b>	
<b>Sample Top</b>	0 ft	<b>Sample Bottom</b>	73 ft
<b>Washed Top</b>	72 ft	<b>Washed Bottom</b>	73 ft
<b>Duplicate Storage</b>			
<b>Comments</b>			

<https://www.iuhr.uiowa.edu/igs/geosam/well/75562/general-information>