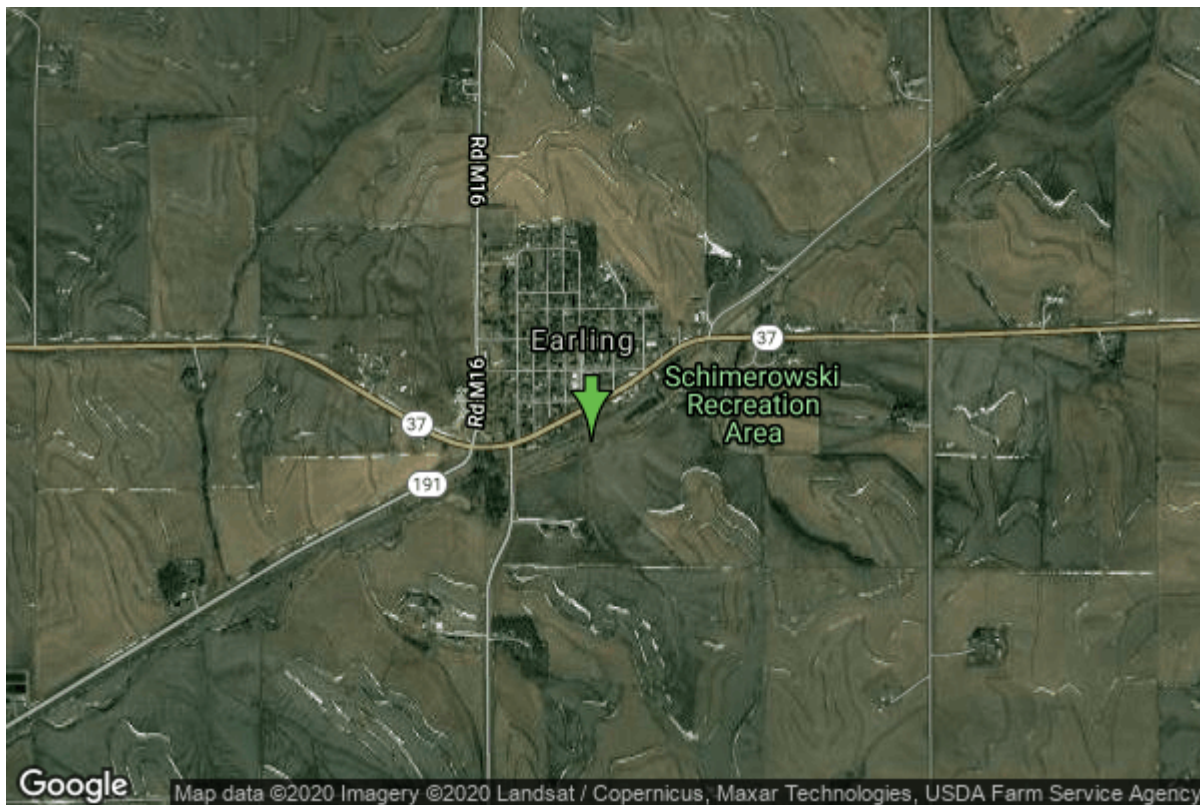


Well W#75871 Information



Date Received	04/12/2013	State	Iowa
Owner Name	Earling, City Of	County	Shelby
Alt Name	#10	Quadrangle	Earling, Iowa
WNumber	75871	Township	T80N
PWTS ID	0	Range	R39W
PWS ID	8320098	Section	5
Storet ID	0	Quarter	NW NE SW
SDWIS ID	2589509	Latitude	41.7733000000
USGS ID	0	Longitude	-95.4165670000
Project Operator	Source Water Protection Unknown	Accuracy	
		UTM X	299150
		UTM Y	4627429

Site Type	Drilled hole	Drilling Company	Jacobs Well Drilling (Chuck)
Well Status	Primary	Drilling Date	04/11/2013
Field Located	No	Drilling Method	Rotary
Elevation	1298 ft	Bedrock Depth	0 ft
Elevation Accuracy	Digital Elevation Model Accurate to 20 ft	Well Depth	47 ft
Landscape Position	Valley	Total Depth	47 ft
		Well Types	Municipal, Public Supply
		Aquifers	

Hole Construction Information

Date	04/11/2013		
Diameter	14.00 in	Depth	46.50 ft
Comments			

Casing Construction Information

Date	04/11/2013	Casing Type	Steel
Start Depth	-5.00 ft	End Depth	32.00 ft
Diameter	8.00 in	Amount	37.00 ft
Comments			

Date	04/11/2013	Casing Type	PVC
Start Depth	32.00 ft	End Depth	36.50 ft
Diameter	8.00 in	Amount	4.50 ft
Comments			

Screen Construction Information

Date	04/11/2013		
Screen Type	Steel	Slot Size	0.80
Start Depth	36.50 ft	End Depth	44.50 ft
Diameter	8.00 in	Amount	8 ft
Comments			

Grout Construction Information

Date	04/11/2013		
Grout Type	Bentonite (Clay)	Grout Placement	Tremie
Start Depth	0.00 ft	End Depth	34.00 ft
Comments			

Gravel Pack Construction Information

Date	04/11/2013		
Gravel Pack Type	Platte River Sand	Slot Size	
Start Depth	33.50 ft	End Depth	46.00 ft
Comments			

Pump Construction Information

Date	04/11/2013	Pump Type	Unknown
Diameter	3.50 in	Rating	18

Depth Intake 42.00 ft
Comments

Log Information

Date
Log Types Drillers log
Prepared By Unknown
Comments

Water Production Information

Date	04/05/2013	Start Time	17:00
Aquifer	Unknown		
Static Water Level	9.00 ft	Yield	40 gallons per minute
Pumping Water Level	37 ft	Yield Method	Volumetric
Measurement	Electric Line	Pump Test	Yes
Pump Method	Pumped	Duration	360 mins
Comments			

Chip Storage Information

Date	04/19/2013		
Storage	OD6-514	Bin	
Number of Boxes	1	Number of Samples	22
Sample Intervals	2	Sample Gaps	
Sample Top	0 ft	Sample Bottom	47 ft
Washed Top	0 ft	Washed Bottom	0 ft
Duplicate Storage			
Comments			

<https://www.iuhr.uiowa.edu/igs/geosam/well/75871/general-information>