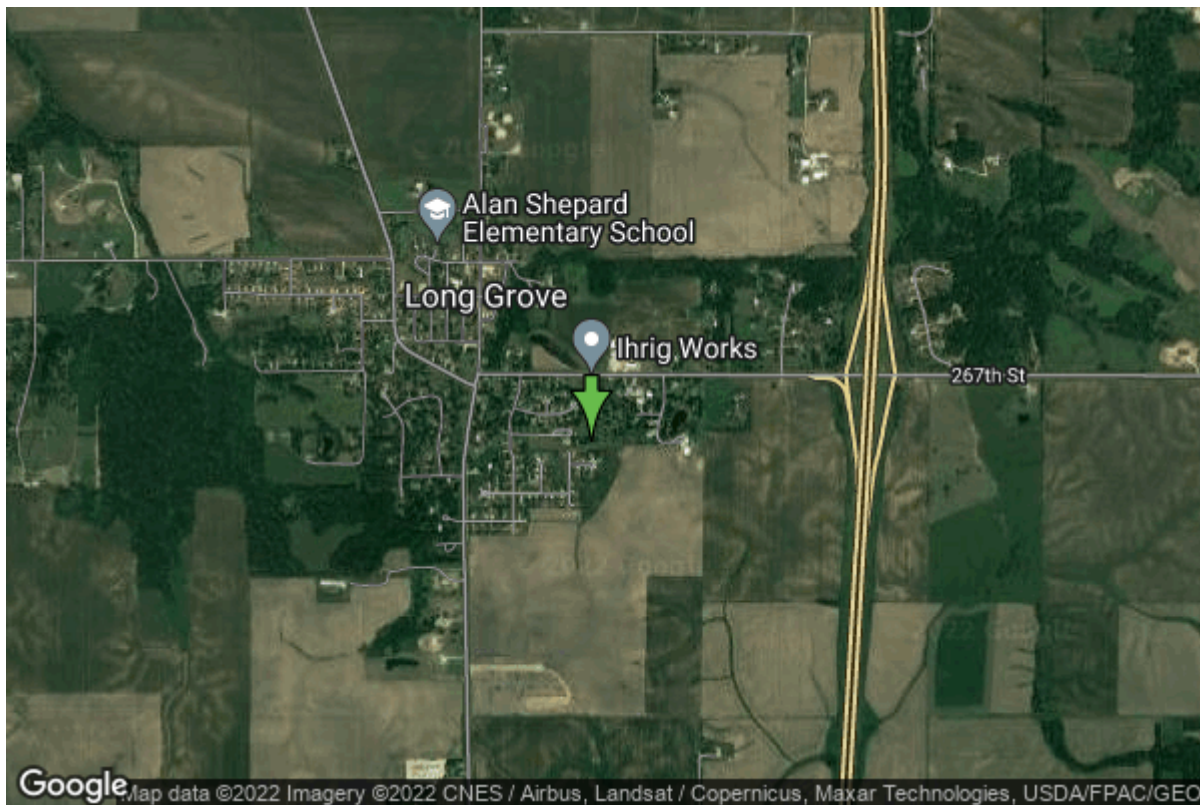


# Well W#76617 Information



<b>Date Received</b>	10/22/2013	<b>State</b>	Iowa
<b>Owner Name</b>	Long Grove, City Of	<b>County</b>	Scott
<b>Alt Name</b>	#2	<b>Quadrangle</b>	Eldridge, Iowa
<b>WNumber</b>	76617	<b>Township</b>	T80N
<b>PWTS ID</b>	0	<b>Range</b>	R3E
<b>PWS ID</b>	8251096	<b>Section</b>	35
<b>Storet ID</b>	0	<b>Quarter</b>	NE SW NW SW
<b>SDWIS ID</b>	2589311	<b>Latitude</b>	41.6928470000
<b>USGS ID</b>	0	<b>Longitude</b>	-90.5774620000
<b>Project</b>	Source Water Protection	<b>Accuracy</b>	
<b>Operator</b>	Unknown	<b>UTM X</b>	701551
		<b>UTM Y</b>	4618552

---

<b>Site Type</b>	Drilled hole	<b>Drilling Company</b>	Gingerich Well Pump Service, Llc
<b>Well Status</b>	Primary	<b>Drilling Date</b>	10/16/2013
<b>Field Located</b>	No	<b>Drilling Method</b>	Rotary
<b>Elevation</b>	792 ft	<b>Bedrock Depth</b>	116 ft
<b>Elevation Accuracy</b>	Digital Elevation Model Accurate to 10 ft	<b>Well Depth</b>	460 ft
<b>Landscape Position</b>	Hillside	<b>Total Depth</b>	460 ft
		<b>Well Types</b>	Municipal, Public Supply
		<b>Aquifers</b>	

# Hole Construction Information

<b>Date</b>	10/16/2013	<b>Depth</b>	116.00 ft
<b>Diameter</b>	21.00 in		
<b>Comments</b>			

---

<b>Date</b>	10/16/2013	<b>Depth</b>	207.00 ft
<b>Diameter</b>	15.00 in		
<b>Comments</b>			

---

<b>Date</b>	10/16/2013	<b>Depth</b>	246.00 ft
<b>Diameter</b>	10.00 in		
<b>Comments</b>			

---

<b>Date</b>	10/16/2013	<b>Depth</b>	460.00 ft
<b>Diameter</b>	8.00 in		
<b>Comments</b>			

# Casing Construction Information

<b>Date</b>	10/16/2013	<b>Casing Type</b>	Steel
<b>Start Depth</b>	-1.00 ft	<b>End Depth</b>	116.00 ft
<b>Diameter</b>	16.38 in	<b>Amount</b>	117.00 ft
<b>Comments</b>			

---

<b>Date</b>	10/16/2013	<b>Casing Type</b>	Steel
<b>Start Depth</b>	116.00 ft	<b>End Depth</b>	207.00 ft
<b>Diameter</b>	10.37 in	<b>Amount</b>	91.00 ft
<b>Comments</b>			

---

<b>Date</b>	10/16/2013	<b>Casing Type</b>	Slotted PVC
<b>Start Depth</b>	204.00 ft	<b>End Depth</b>	246.00 ft
<b>Diameter</b>	8.00 in	<b>Amount</b>	42.00 ft
<b>Comments</b>			

# Grout Construction Information

<b>Date</b>	10/16/2013	<b>Grout Placement</b>	Unknown
<b>Grout Type</b>	Cement	<b>End Depth</b>	207.00 ft
<b>Start Depth</b>	0.00 ft		
<b>Comments</b>			

# Log Information

**Date**  
**Log Types** Drillers log  
**Prepared By** Unknown  
**Comments**

# Water Production Information

<b>Date</b>	10/17/2013	<b>Start Time</b>	09:00
<b>Aquifer</b>	Unknown	<b>Yield</b>	320 gallons per minute
<b>Static Water Level</b>	95.00 ft	<b>Yield Method</b>	Estimate
<b>Pumping Water Level</b>	200 ft	<b>Pump Test</b>	Yes
<b>Measurement</b>	Estimate	<b>Duration</b>	540 mins
<b>Pump Method</b>	Airlifted		
<b>Comments</b>			

# Chip Storage Information

<b>Date</b>	10/26/2013	<b>Bin</b>	
<b>Storage</b>	OD6-735>736	<b>Number of Samples</b>	91
<b>Number of Boxes</b>	2	<b>Sample Gaps</b>	245-250
<b>Sample Intervals</b>	5	<b>Sample Bottom</b>	460 ft
<b>Sample Top</b>	0 ft	<b>Washed Bottom</b>	460 ft
<b>Washed Top</b>	115 ft		
<b>Duplicate Storage</b>			
<b>Comments</b>			

<https://www.iuhr.uiowa.edu/igs/geosam/well/76617/general-information>