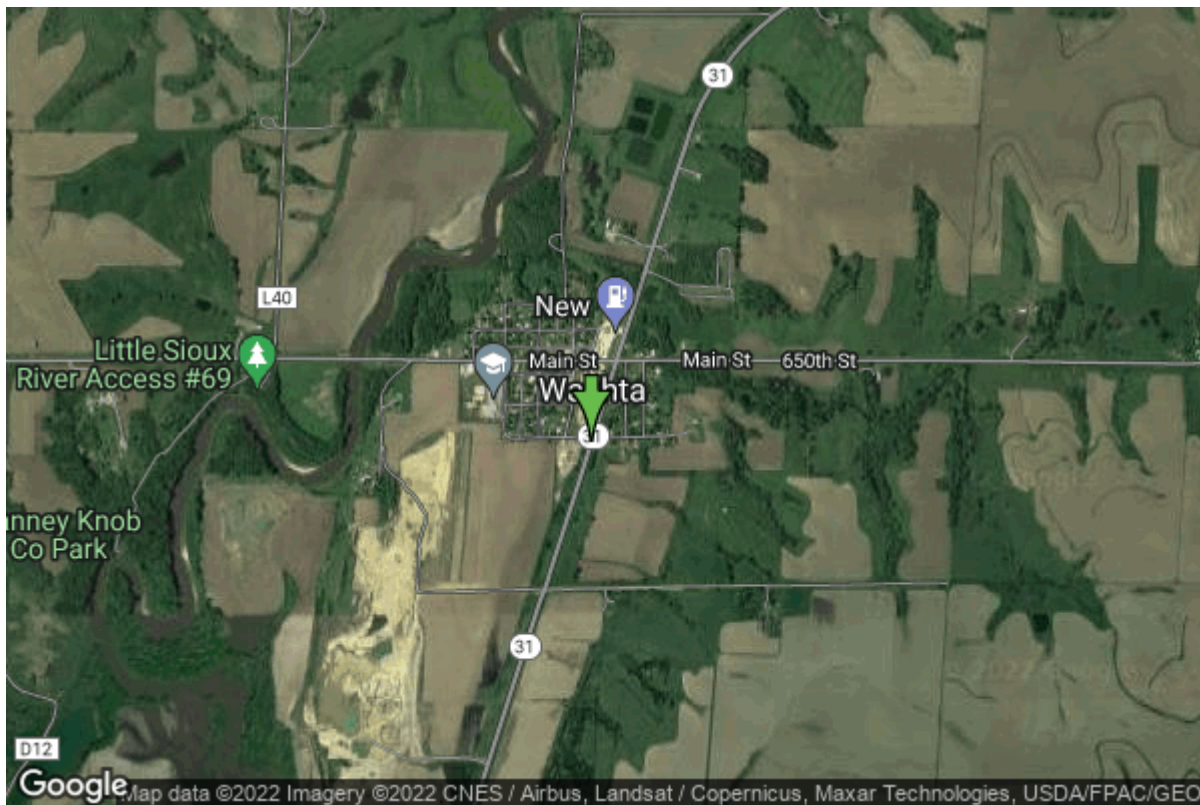


Well W#77263 Information



Date Received	05/01/2014	State	Iowa
Owner Name	Washta, City Of	County	Cherokee
Alt Name	#4	Quadrangle	Washta, Iowa
WNumber	77263	Township	T90N
PWTS ID	0	Range	R41W
PWS ID	0	Section	32
Storet ID	0	Quarter	NW NW SE
SDWIS ID	0	Latitude	42.5729640000
USGS ID	0	Longitude	-95.7157210000
Project	Unknown	Accuracy	
Operator	Unknown	UTM X	277112
		UTM Y	4716970

Site Type	Drilled hole	Drilling Company	Charles Sargent Irrigation Company
Well Status	Primary	Drilling Date	03/27/2014
Field Located	No	Drilling Method	Rotary
Elevation	1157 ft	Bedrock Depth	95 ft
Elevation Accuracy	Digital Elevation Model Accurate to 10 ft	Well Depth	143 ft
Landscape Position	Unknown	Total Depth	160 ft
		Well Types	Public Supply
		Aquifers	

Hole Construction Information

Date	03/27/2014	Depth	143.00 ft
Diameter	24.00 in		
Comments			

Casing Construction Information

Date	03/27/2014	Casing Type	Steel
Start Depth	0.00 ft	End Depth	72.00 ft
Diameter	12.00 in	Amount	72.00 ft
Comments			

Date	03/27/2014	Casing Type	Steel
Start Depth	95.00 ft	End Depth	100.00 ft
Diameter	12.00 in	Amount	5.00 ft
Comments			

Date	03/27/2014	Casing Type	Steel
Start Depth	110.00 ft	End Depth	123.00 ft
Diameter	12.00 in	Amount	13.00 ft
Comments			

Date	03/27/2014	Casing Type	Perforated Steel
Start Depth	75.00 ft	End Depth	95.00 ft
Diameter	12.00 in	Amount	20.00 ft
Comments	slot size = .030		

Date	03/27/2014	Casing Type	Perforated Steel
Start Depth	100.00 ft	End Depth	110.00 ft
Diameter	12.00 in	Amount	10.00 ft
Comments	slot size = .030		

Grout Construction Information

Date	03/27/2014	Grout Placement	Unknown
Grout Type	Bentonite (Clay)	End Depth	75.00 ft
Start Depth	72.00 ft		
Comments			

Date	03/27/2014	Grout Placement	Unknown
Grout Type	Neat Cement	End Depth	72.00 ft
Start Depth	0.00 ft		
Comments			

Gravel Pack Construction Information

Date	03/27/2014	Slot Size	
Gravel Pack Type	Unknown	End Depth	143.00 ft
Start Depth	75.00 ft		
Comments	chlorinated		

Log Information

Date	
Log Types	Drillers log
Prepared By	Unknown
Comments	

Chip Storage Information

Date	10/31/2014	Bin	
Storage	OD6-961>962	Number of Samples	30
Number of Boxes	2	Sample Gaps	150-60
Sample Intervals	5	Sample Bottom	150 ft
Sample Top	0 ft	Washed Bottom	150 ft
Washed Top	100 ft		
Duplicate Storage			
Comments			

<https://www.iuhr.uiowa.edu/igs/geosam/well/77263/general-information>