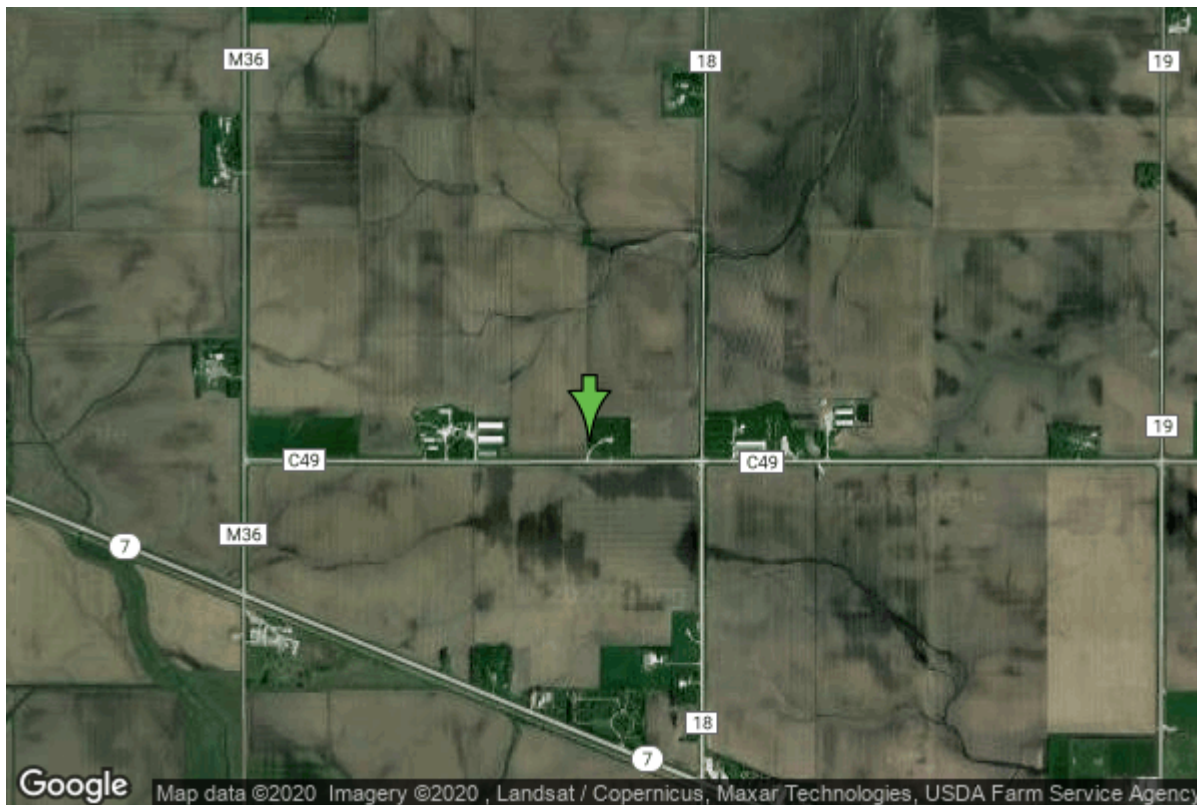


# Well W#79214 Information



<b>Date Received</b>		<b>State</b>	Iowa
<b>Owner Name</b>	Storm Lake, City of	<b>County</b>	Buena Vista
<b>Alt Name</b>	#20	<b>Quadrangle</b>	Storm Lake, Iowa
<b>WNumber</b>	79214	<b>Township</b>	T91N
<b>PWTS ID</b>	0	<b>Range</b>	R37W
<b>PWS ID</b>	1178097	<b>Section</b>	29
<b>Storet ID</b>	0	<b>Quarter</b>	SE SE SW
<b>SDWIS ID</b>	0	<b>Latitude</b>	42.6625560000
<b>USGS ID</b>	0	<b>Longitude</b>	-95.2344170000
<b>Project</b>		<b>Accuracy</b>	
<b>Operator</b>		<b>UTM X</b>	316879
		<b>UTM Y</b>	4725764

---

<b>Site Type</b>	Drilled hole	<b>Drilling Company</b>	Charles Sargent Irrigation Company
<b>Well Status</b>	Active	<b>Drilling Date</b>	09/18/2014
<b>Field Located</b>	No	<b>Drilling Method</b>	Rotary
<b>Elevation</b>	1449 ft	<b>Bedrock Depth</b>	290 ft
<b>Elevation Accuracy</b>	Digital Elevation Model Accurate to 20 ft	<b>Well Depth</b>	389 ft
<b>Landscape Position</b>	Unknown	<b>Total Depth</b>	508 ft
		<b>Well Types</b>	Public Supply
		<b>Aquifers</b>	

# Hole Construction Information

<b>Date</b>	09/18/2014	<b>Depth</b>	497.00 ft
<b>Diameter</b>	28.00 in		
<b>Comments</b>			

---

<b>Date</b>	09/18/2014	<b>Depth</b>	389.00 ft
<b>Diameter</b>	42.00 in		
<b>Comments</b>			

# Casing Construction Information

<b>Date</b>	09/18/2014	<b>Casing Type</b>	Steel
<b>Start Depth</b>	0.00 ft	<b>End Depth</b>	397.00 ft
<b>Diameter</b>	18.00 in	<b>Amount</b>	397.00 ft
<b>Comments</b>			

---

<b>Date</b>	09/18/2014	<b>Casing Type</b>	Steel
<b>Start Depth</b>	0.00 ft	<b>End Depth</b>	389.00 ft
<b>Diameter</b>	30.00 in	<b>Amount</b>	389.00 ft
<b>Comments</b>			

# Screen Construction Information

<b>Date</b>	09/18/2014	<b>Slot Size</b>	0.03
<b>Screen Type</b>	Steel	<b>End Depth</b>	497.00 ft
<b>Start Depth</b>	397.00 ft	<b>Amount</b>	100 ft
<b>Diameter</b>	18.00 in		
<b>Comments</b>			

# Grout Construction Information

<b>Date</b>	09/18/2014	<b>Grout Placement</b>	Unknown
<b>Grout Type</b>	Bentonite (Clay)	<b>End Depth</b>	380.00 ft
<b>Start Depth</b>	360.00 ft		
<b>Comments</b>			

---

<b>Date</b>	09/18/2014	<b>Grout Placement</b>	Unknown
<b>Grout Type</b>	Neat Cement	<b>End Depth</b>	360.00 ft
<b>Start Depth</b>	0.00 ft		
<b>Comments</b>			

# Gravel Pack Construction Information

<b>Date</b>	09/18/2014	<b>Slot Size</b>	
<b>Gravel Pack Type</b>	Gravel	<b>End Depth</b>	497.00 ft
<b>Start Depth</b>	380.00 ft		
<b>Comments</b>			

# Pump Construction Information

<b>Date</b>	07/15/2015	<b>Pump Type</b>	Unknown
<b>Diameter</b>	10.00 in	<b>Rating</b>	1000
<b>Depth Intake</b>	430.00 ft		
<b>Comments</b>			

# Log Information

<b>Date</b>	09/18/2014		
<b>Log Types</b>	Drillers log		
<b>Prepared By</b>	Charles Sargent Irrigation Company, Inc.		
<b>Comments</b>			

# Formation Information

<b>Formation Color</b>	Brown	<b>Formation Lithology</b>	soil or fill
<b>Start Depth</b>	0.00 ft	<b>End Depth</b>	20.00 ft
<b>Comments</b>			

---

<b>Formation Color</b>	Blue	<b>Formation Lithology</b>	clay
<b>Start Depth</b>	20.00 ft	<b>End Depth</b>	40.00 ft
<b>Comments</b>	w/ cobbles		

---

<b>Formation Color</b>	Blue	<b>Formation Lithology</b>	clay
<b>Start Depth</b>	40.00 ft	<b>End Depth</b>	100.00 ft
<b>Comments</b>	w/ limestone layers & cobbles		

---

<b>Formation Color</b>	Blue	<b>Formation Lithology</b>	sandy clay
<b>Start Depth</b>	100.00 ft	<b>End Depth</b>	110.00 ft
<b>Comments</b>			

---

<b>Formation Color</b>	Blue	<b>Formation Lithology</b>	sandy clay
<b>Start Depth</b>	110.00 ft	<b>End Depth</b>	120.00 ft
<b>Comments</b>			

---

<b>Formation Color</b>	Blue	<b>Formation Lithology</b>	sandy clay
<b>Start Depth</b>	120.00 ft	<b>End Depth</b>	130.00 ft
<b>Comments</b>			

<b>Comments</b>	w/ limestone layers		
<b>Formation Color</b>	Tan	<b>Formation Lithology</b>	sandy clay
<b>Start Depth</b>	130.00 ft	<b>End Depth</b>	140.00 ft
<b>Comments</b>			
<b>Formation Color</b>	Tan	<b>Formation Lithology</b>	sandy clay
<b>Start Depth</b>	140.00 ft	<b>End Depth</b>	200.00 ft
<b>Comments</b>	w/ limestone		
<b>Formation Color</b>	Tan	<b>Formation Lithology</b>	sandy clay
<b>Start Depth</b>	200.00 ft	<b>End Depth</b>	215.00 ft
<b>Comments</b>			
<b>Formation Color</b>	Tan	<b>Formation Lithology</b>	sandy clay
<b>Start Depth</b>	215.00 ft	<b>End Depth</b>	220.00 ft
<b>Comments</b>			
<b>Formation Color</b>	Tan	<b>Formation Lithology</b>	sandy clay
<b>Start Depth</b>	220.00 ft	<b>End Depth</b>	236.00 ft
<b>Comments</b>			
<b>Formation Color</b>	Tan	<b>Formation Lithology</b>	sandy clay
<b>Start Depth</b>	236.00 ft	<b>End Depth</b>	240.00 ft
<b>Comments</b>			
<b>Formation Color</b>	Tan	<b>Formation Lithology</b>	sandy clay
<b>Start Depth</b>	240.00 ft	<b>End Depth</b>	280.00 ft
<b>Comments</b>			
<b>Formation Color</b>	Tan	<b>Formation Lithology</b>	sandy clay
<b>Start Depth</b>	280.00 ft	<b>End Depth</b>	290.00 ft
<b>Comments</b>			
<b>Formation Color</b>	Tan	<b>Formation Lithology</b>	sandstone
<b>Start Depth</b>	290.00 ft	<b>End Depth</b>	310.00 ft
<b>Comments</b>	w/ clay		
<b>Formation Color</b>	Tan	<b>Formation Lithology</b>	clay
<b>Start Depth</b>	310.00 ft	<b>End Depth</b>	316.00 ft
<b>Comments</b>			
<b>Formation Color</b>	Tan	<b>Formation Lithology</b>	sandstone
<b>Start Depth</b>	316.00 ft	<b>End Depth</b>	320.00 ft
<b>Comments</b>	w/ clay		
<b>Formation Color</b>	Tan	<b>Formation Lithology</b>	sandstone

<b>Start Depth</b>	320.00 ft	<b>End Depth</b>	360.00 ft
<b>Comments</b>	w/ clay		
<b>Formation Color</b>	Tan	<b>Formation Lithology</b>	sandstone
<b>Start Depth</b>	360.00 ft	<b>End Depth</b>	396.00 ft
<b>Comments</b>	w/ shale		
<b>Formation Color</b>	Gray	<b>Formation Lithology</b>	shale
<b>Start Depth</b>	396.00 ft	<b>End Depth</b>	400.00 ft
<b>Comments</b>	w/ sandstone		
<b>Formation Color</b>	Tan	<b>Formation Lithology</b>	sandstone
<b>Start Depth</b>	400.00 ft	<b>End Depth</b>	440.00 ft
<b>Comments</b>	w/ shale		
<b>Formation Color</b>	Tan	<b>Formation Lithology</b>	sandstone
<b>Start Depth</b>	440.00 ft	<b>End Depth</b>	460.00 ft
<b>Comments</b>	w/ shale		
<b>Formation Color</b>	Tan	<b>Formation Lithology</b>	sandstone
<b>Start Depth</b>	460.00 ft	<b>End Depth</b>	480.00 ft
<b>Comments</b>	w/ gravel		
<b>Formation Color</b>	Tan	<b>Formation Lithology</b>	sandstone
<b>Start Depth</b>	480.00 ft	<b>End Depth</b>	497.00 ft
<b>Comments</b>	w/ shale		
<b>Formation Color</b>	Gray	<b>Formation Lithology</b>	shale
<b>Start Depth</b>	497.00 ft	<b>End Depth</b>	500.00 ft
<b>Comments</b>			
<b>Formation Color</b>	Gray	<b>Formation Lithology</b>	shale
<b>Start Depth</b>	500.00 ft	<b>End Depth</b>	507.00 ft
<b>Comments</b>	w/ limestone		
<b>Formation Color</b>	Gray	<b>Formation Lithology</b>	shale
<b>Start Depth</b>	507.00 ft	<b>End Depth</b>	508.00 ft
<b>Comments</b>			

## Water Production Information

<b>Date</b>	10/07/2014	<b>Start Time</b>	
<b>Aquifer</b>		<b>Yield</b>	1300 gallons per minute
<b>Static Water Level</b>	295.00 ft	<b>Yield Method</b>	Orifice
<b>Pumping Water Level</b>	371 ft	<b>Pump Test</b>	Yes
<b>Measurement</b>	Unknown	<b>Duration</b>	960 mins
<b>Pump Method</b>	Pumped		

## Comments

# Chip Storage Information

<b>Date</b>	10/12/2015	<b>Bin</b>	
<b>Storage</b>	OD7-184>186	<b>Number of Samples</b>	98
<b>Number of Boxes</b>	3	<b>Sample Gaps</b>	390-400
<b>Sample Intervals</b>	5	<b>Sample Bottom</b>	508 ft
<b>Sample Top</b>	0 ft	<b>Washed Bottom</b>	508 ft
<b>Washed Top</b>	295 ft		
<b>Duplicate Storage</b>			
<b>Comments</b>			

<https://www.ihr.uiowa.edu/igs/geosam/well/79214/general-information>