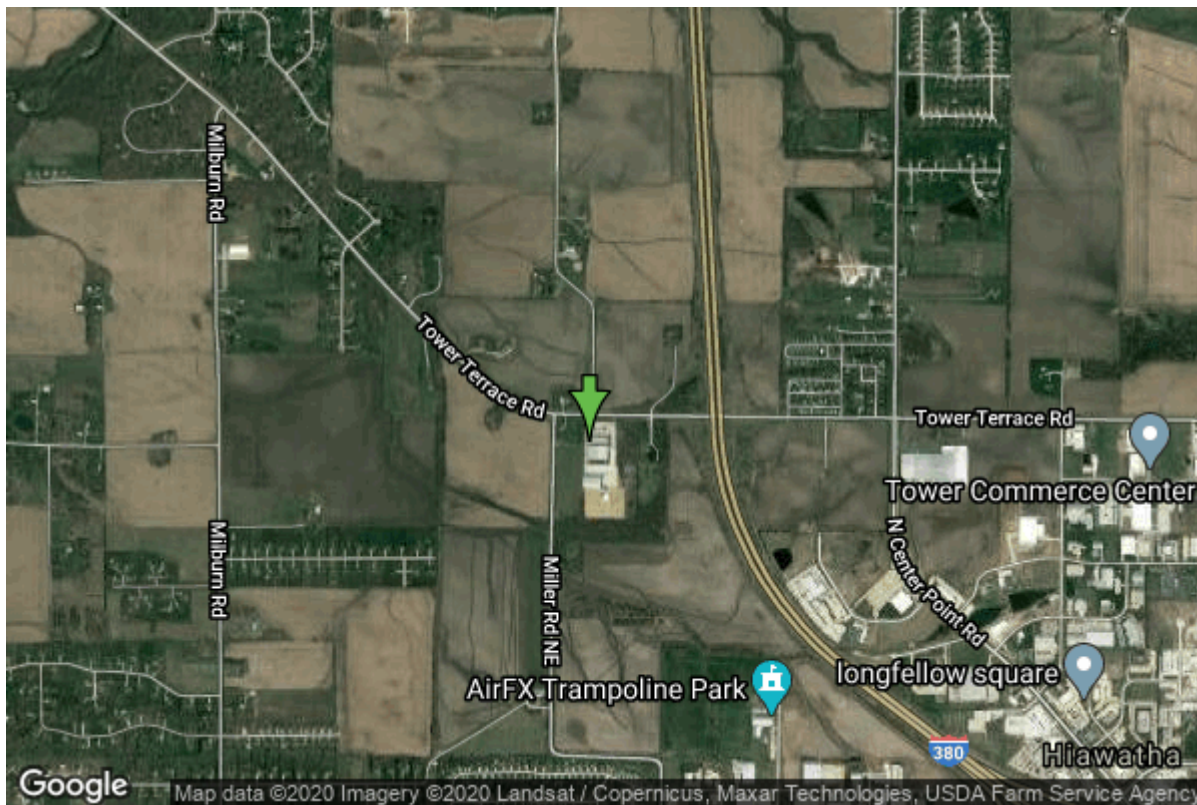


# Well W#83244 Information



<b>Date Received</b>		<b>State</b>	Iowa
<b>Owner Name</b>	Twisters Gymnastics Inc	<b>County</b>	Linn
<b>Alt Name</b>	#1	<b>Quadrangle</b>	Cedar Rapids North, Iowa
<b>WNumber</b>	83244	<b>Township</b>	T84N
<b>PWTS ID</b>	0	<b>Range</b>	R7W
<b>PWS ID</b>	5715214	<b>Section</b>	30
<b>Storet ID</b>	0	<b>Quarter</b>	SE NW NW
<b>SDWIS ID</b>	0	<b>Latitude</b>	42.0580000000
<b>USGS ID</b>	0	<b>Longitude</b>	-91.7046000000
<b>Project</b>		<b>Accuracy</b>	
<b>Operator</b>		<b>UTM X</b>	607185
		<b>UTM Y</b>	4657028

---

<b>Site Type</b>	Drilled hole	<b>Drilling Company</b>	Greiner Well Service, Inc.
<b>Well Status</b>	Active	<b>Drilling Date</b>	09/22/2013
<b>Field Located</b>	No	<b>Drilling Method</b>	Rotary
<b>Elevation</b>	814 ft	<b>Bedrock Depth</b>	34 ft
<b>Elevation Accuracy</b>	Topo Map Accurate to 2 ft	<b>Well Depth</b>	195 ft
<b>Landscape Position</b>	Level Surface	<b>Total Depth</b>	195 ft
		<b>Well Types</b>	Public Supply
		<b>Aquifers</b>	

# Hole Construction Information

Date	09/22/2013		
Diameter	12.00 in	Depth	150.00 ft
Comments			

---

Date	09/22/2013		
Diameter	6.00 in	Depth	195.00 ft
Comments			

# Casing Construction Information

Date	09/22/2013	Casing Type	Steel
Start Depth	-2.00 ft	End Depth	150.00 ft
Diameter	6.00 in	Amount	152.00 ft
Comments			

# Grout Construction Information

Date	09/22/2013		
Grout Type	Cement	Grout Placement	Tremie
Start Depth	0.00 ft	End Depth	150.00 ft
Comments			

# Log Information

Date	09/22/2013		
Log Types	Drillers log		
Prepared By	Greiner Well Service, Inc.		
Comments			

# Formation Information

Formation Color	Brown	Formation Lithology	sand
Start Depth	0.00 ft	End Depth	10.00 ft
Comments			

---

Formation Color	Gray	Formation Lithology	clay
Start Depth	10.00 ft	End Depth	17.00 ft
Comments			

---

Formation Color	Gray	Formation Lithology	clay
Start Depth	17.00 ft	End Depth	34.00 ft
Comments			

<b>Formation Color</b>	Brown	<b>Formation Lithology</b>	limestone
<b>Start Depth</b>	34.00 ft	<b>End Depth</b>	57.00 ft
<b>Comments</b>			
<b>Formation Color</b>	Brown	<b>Formation Lithology</b>	limestone
<b>Start Depth</b>	57.00 ft	<b>End Depth</b>	67.00 ft
<b>Comments</b>			
<b>Formation Color</b>	Gray/Greenish	<b>Formation Lithology</b>	limestone and shale
<b>Start Depth</b>	67.00 ft	<b>End Depth</b>	82.00 ft
<b>Comments</b>			
<b>Formation Color</b>	Gray	<b>Formation Lithology</b>	limestone
<b>Start Depth</b>	82.00 ft	<b>End Depth</b>	150.00 ft
<b>Comments</b>			
<b>Formation Color</b>	Gray	<b>Formation Lithology</b>	limestone
<b>Start Depth</b>	150.00 ft	<b>End Depth</b>	160.00 ft
<b>Comments</b>			
<b>Formation Color</b>	Gray/Greenish	<b>Formation Lithology</b>	limestone and shale
<b>Start Depth</b>	160.00 ft	<b>End Depth</b>	167.00 ft
<b>Comments</b>			
<b>Formation Color</b>	Brown	<b>Formation Lithology</b>	limestone
<b>Start Depth</b>	167.00 ft	<b>End Depth</b>	195.00 ft
<b>Comments</b>			

## Water Production Information

<b>Date</b>	09/22/2013	<b>Start Time</b>	
<b>Aquifer</b>	Unknown	<b>Yield</b>	0 gallons per minute
<b>Static Water Level</b>	0.00 ft	<b>Yield Method</b>	Unknown
<b>Pumping Water Level</b>	0 ft	<b>Pump Test</b>	No
<b>Measurement</b>	Unknown	<b>Duration</b>	60 mins
<b>Pump Method</b>	Airlifted		
<b>Comments</b>			

<https://www.iuhr.uiowa.edu/igs/geosam/well/83244/general-information>