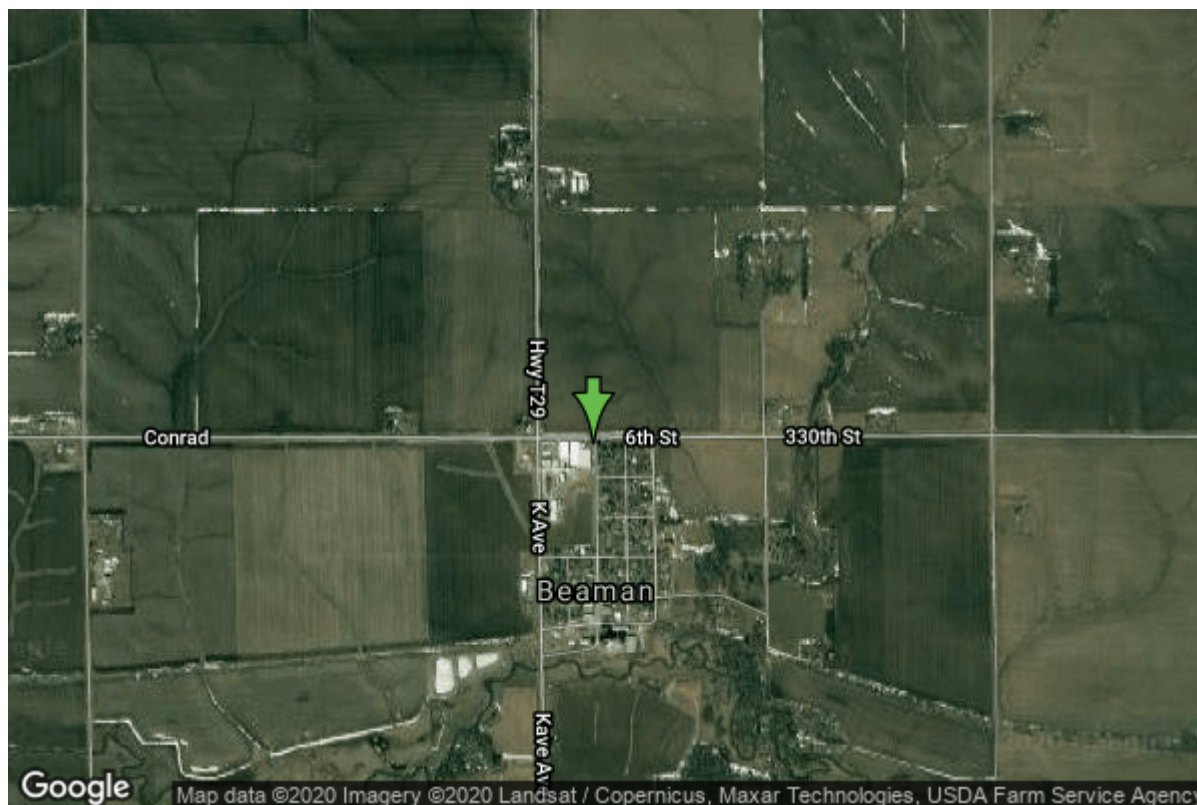


Well W#8352 Information



Date Received		State	Iowa
Owner Name	Beaman, City Of	County	Grundy
Alt Name	#1	Quadrangle	Conrad East, Iowa
WNumber	8352	Township	T86N
PWTS ID	0	Range	R17W
PWS ID	3803094	Section	34
Storet ID	0	Quarter	NW NW NE
SDWIS ID	2412183	Latitude	42.2243200000
USGS ID	0	Longitude	-92.8229600000
Project	Source Water Protection	Accuracy	
Operator	Unknown	UTM X	514610
		UTM Y	4674698

Site Type	Drilled hole	Drilling Company	Hoeg & Ames (H.M. White)
Well Status	Not Used	Drilling Date	03/30/1957
Field Located	No	Drilling Method	Cable
Elevation	1029 ft	Bedrock Depth	50 ft
Elevation Accuracy	Digital Elevation Model Accurate to 5 ft	Well Depth	80 ft
Landscape Position	Hillside	Total Depth	80 ft
		Well Types	Municipal, Public Supply
		Aquifers	Mississippian

Casing Construction Information

Date	03/30/1957	Casing Type	Steel
Start Depth	0.00 ft	End Depth	0.00 ft
Diameter	10.00 in	Amount	47.00 ft
Comments			

Date	03/30/1957	Casing Type	Steel
Start Depth	0.00 ft	End Depth	0.00 ft
Diameter	8.00 in	Amount	50.00 ft
Comments			

Log Information

Date	10/07/1957
Log Types	Strip log
Prepared By	Unknown
Comments	

Date	
Log Types	Drillers log
Prepared By	Unknown
Comments	

Stratigraphy Information

System	Quaternary		
Series			
Group			
Formation			
Member			
Submember			
Start Depth	0.00 ft	End Depth	5.00 ft
Contact Accuracy			
Penetration			
Primary Lithology	Soil Or Fill	Percent	100
Secondary Lithology		Percent	
Tertiary Lithology		Percent	
Comments			

System	Quaternary
Series	
Group	
Formation	
Member	
Submember	

Start Depth	5.00 ft	End Depth	15.00 ft
Contact Accuracy			
Penetration			
Primary Lithology	Loess	Percent	100
Secondary Lithology		Percent	
Tertiary Lithology		Percent	
Comments			

System	Quaternary		
Series	Pleistocene Series		
Group			
Formation			
Member			
Submember			
Start Depth	15.00 ft	End Depth	50.00 ft
Contact Accuracy			
Penetration			
Primary Lithology	Sand And Gravel	Percent	0
Secondary Lithology	Till	Percent	0
Tertiary Lithology		Percent	
Comments			

System	Mississippian (Subsystem Of Carboniferous System)		
Series			
Group	North Hill		
Formation	Chapin		
Member			
Submember			
Start Depth	50.00 ft	End Depth	70.00 ft
Contact Accuracy			
Penetration			
Primary Lithology	Limestone	Percent	100
Secondary Lithology		Percent	
Tertiary Lithology		Percent	
Comments			

System	Mississippian (Subsystem Of Carboniferous System)		
Series			
Group	North Hill		
Formation	Prospect Hill		
Member			
Submember			
Start Depth	70.00 ft	End Depth	71.00 ft
Contact Accuracy			
Penetration			
Primary Lithology	Siltstone	Percent	100
Secondary Lithology		Percent	
Tertiary Lithology		Percent	
Comments			

System	Devonian		
Series			
Group	Yellow Spring (New Albany)		
Formation	Maple Mill		
Member			
Submember			
Start Depth	71.00 ft	End Depth	80.00 ft
Contact Accuracy			
Penetration			
Primary Lithology	Shale	Percent	100
Secondary Lithology		Percent	
Tertiary Lithology		Percent	
Comments			

Water Production Information

Date	03/30/1957	Start Time	
Aquifer	Unknown	Yield	196 gallons per minute
Static Water Level	22.00 ft	Yield Method	Unknown
Pumping Water Level	33 ft	Pump Test	Yes
Measurement	Unknown	Duration	0 mins
Pump Method	Unknown		
Comments			

Chip Storage Information

Date	06/21/1957	Bin	
Storage	EM2-9	Number of Samples	14
Number of Boxes	1	Sample Gaps	70-75
Sample Intervals	5	Sample Bottom	80 ft
Sample Top	5 ft	Washed Bottom	80 ft
Washed Top	50 ft		
Duplicate Storage			
Comments			

<https://www.iuhr.uiowa.edu/igs/geosam/well/8352/general-information>