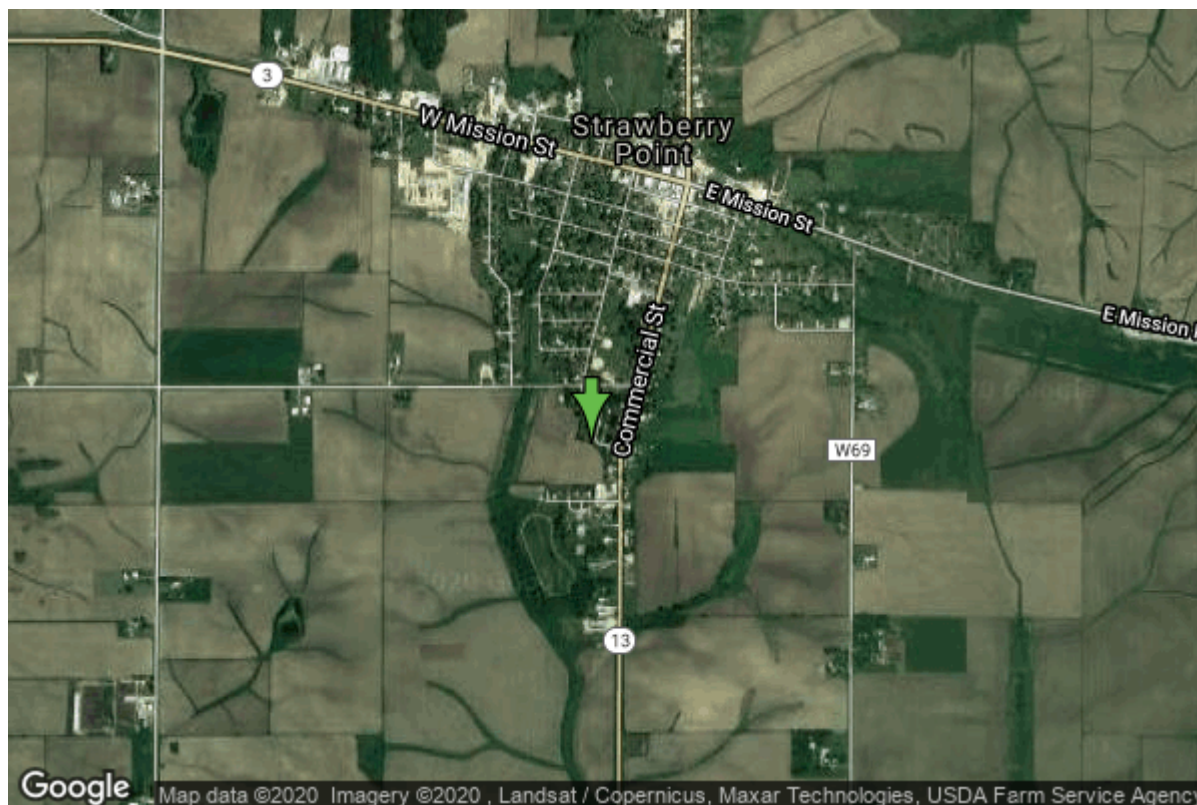


# Well W#8583 Information



<b>Date Received</b>		<b>State</b>	Iowa
<b>Owner Name</b>	Strawberry Point, City Of	<b>County</b>	Clayton
<b>Alt Name</b>	#4	<b>Quadrangle</b>	Strawberry Point, Iowa
<b>WNumber</b>	8583	<b>Township</b>	T91N
<b>PWTS ID</b>	0	<b>Range</b>	R6W
<b>PWS ID</b>	2279003	<b>Section</b>	22
<b>Storet ID</b>	0	<b>Quarter</b>	SW SE SE
<b>SDWIS ID</b>	2407293	<b>Latitude</b>	42.6752500000
<b>USGS ID</b>	0	<b>Longitude</b>	-91.5376800000
<b>Project</b>	Source Water Protection	<b>Accuracy</b>	
<b>Operator</b>	Unknown	<b>UTM X</b>	619818
		<b>UTM Y</b>	4725789
<hr/>			
<b>Site Type</b>	Drilled hole	<b>Drilling Company</b>	Hoeg & Ames (H.M. White)
<b>Well Status</b>	Not Used	<b>Drilling Date</b>	08/02/1957
<b>Field Located</b>	No	<b>Drilling Method</b>	Cable
<b>Elevation</b>	1176 ft	<b>Bedrock Depth</b>	0 ft
<b>Elevation Accuracy</b>	Digital Elevation Model Accurate to 5 ft	<b>Well Depth</b>	240 ft
<b>Landscape Position</b>	Unknown	<b>Total Depth</b>	240 ft
		<b>Well Types</b>	Municipal, Public Supply
		<b>Aquifers</b>	Silurian

# Casing Construction Information

<b>Date</b>	08/02/1957	<b>Casing Type</b>	Steel
<b>Start Depth</b>	0.00 ft	<b>End Depth</b>	0.00 ft
<b>Diameter</b>	16.00 in	<b>Amount</b>	20.00 ft
<b>Comments</b>			

---

<b>Date</b>	08/02/1957	<b>Casing Type</b>	Steel
<b>Start Depth</b>	0.00 ft	<b>End Depth</b>	0.00 ft
<b>Diameter</b>	12.00 in	<b>Amount</b>	98.00 ft
<b>Comments</b>			

---

<b>Date</b>	08/02/1957	<b>Casing Type</b>	Steel
<b>Start Depth</b>	0.00 ft	<b>End Depth</b>	0.00 ft
<b>Diameter</b>	10.00 in	<b>Amount</b>	135.00 ft
<b>Comments</b>			

# Grout Construction Information

<b>Date</b>	08/02/1957	<b>Grout Type</b>	Cement	<b>Grout Placement</b>	Unknown
<b>Start Depth</b>	0.00 ft	<b>End Depth</b>		<b>End Depth</b>	20.00 ft
<b>Comments</b>					

# Pump Construction Information

<b>Date</b>	08/02/1957	<b>Pump Type</b>	Turbine
<b>Diameter</b>	0.00 in	<b>Rating</b>	0
<b>Depth Intake</b>	175.00 ft		
<b>Comments</b>			

# Log Information

<b>Date</b>	04/10/1958
<b>Log Types</b>	Strip log
<b>Prepared By</b>	Unknown
<b>Comments</b>	

---

<b>Date</b>	
<b>Log Types</b>	Drillers log
<b>Prepared By</b>	Strawberry Point, City Of
<b>Comments</b>	

# Stratigraphy Information

<b>System</b>	Quaternary		
<b>Series</b>	Pleistocene Series		
<b>Group</b>	Pre-Illinoian		
<b>Formation</b>			
<b>Member</b>			
<b>Submember</b>			
<b>Start Depth</b>	0.00 ft	<b>End Depth</b>	90.00 ft
<b>Contact Accuracy</b>			
<b>Penetration</b>			
<b>Primary Lithology</b>	Till	<b>Percent</b>	100
<b>Secondary Lithology</b>		<b>Percent</b>	
<b>Tertiary Lithology</b>		<b>Percent</b>	
<b>Comments</b>			

---

<b>System</b>	Silurian		
<b>Series</b>			
<b>Group</b>			
<b>Formation</b>	Hopkinton		
<b>Member</b>			
<b>Submember</b>			
<b>Start Depth</b>	97.00 ft	<b>End Depth</b>	105.00 ft
<b>Contact Accuracy</b>			
<b>Penetration</b>			
<b>Primary Lithology</b>	Dolomite	<b>Percent</b>	100
<b>Secondary Lithology</b>		<b>Percent</b>	
<b>Tertiary Lithology</b>		<b>Percent</b>	
<b>Comments</b>			

---

<b>System</b>	Silurian		
<b>Series</b>			
<b>Group</b>			
<b>Formation</b>	Blanding		
<b>Member</b>			
<b>Submember</b>			
<b>Start Depth</b>	105.00 ft	<b>End Depth</b>	165.00 ft
<b>Contact Accuracy</b>			
<b>Penetration</b>			
<b>Primary Lithology</b>	Dolomite	<b>Percent</b>	0
<b>Secondary Lithology</b>	Chert/Chalcedony	<b>Percent</b>	0
<b>Tertiary Lithology</b>		<b>Percent</b>	
<b>Comments</b>			

---

<b>System</b>	Silurian		
<b>Series</b>			
<b>Group</b>			
<b>Formation</b>	Tete Des Morts		

<b>Member</b>			
<b>Submember</b>			
<b>Start Depth</b>	165.00 ft	<b>End Depth</b>	210.00 ft
<b>Contact Accuracy</b>			
<b>Penetration</b>			
<b>Primary Lithology</b>	Dolomite	<b>Percent</b>	0
<b>Secondary Lithology</b>	Chert/Chalcedony	<b>Percent</b>	0
<b>Tertiary Lithology</b>		<b>Percent</b>	
<b>Comments</b>			

---

<b>System</b>	Silurian		
<b>Series</b>			
<b>Group</b>			
<b>Formation</b>	Mosalem		
<b>Member</b>			
<b>Submember</b>			
<b>Start Depth</b>	210.00 ft	<b>End Depth</b>	236.00 ft
<b>Contact Accuracy</b>			
<b>Penetration</b>			
<b>Primary Lithology</b>	Dolomite	<b>Percent</b>	0
<b>Secondary Lithology</b>	Shale	<b>Percent</b>	0
<b>Tertiary Lithology</b>		<b>Percent</b>	
<b>Comments</b>			

---

<b>System</b>	Ordovician		
<b>Series</b>			
<b>Group</b>			
<b>Formation</b>	Maquoketa		
<b>Member</b>	Brainard Shale		
<b>Submember</b>			
<b>Start Depth</b>	236.00 ft	<b>End Depth</b>	240.00 ft
<b>Contact Accuracy</b>			
<b>Penetration</b>			
<b>Primary Lithology</b>	Shale	<b>Percent</b>	100
<b>Secondary Lithology</b>		<b>Percent</b>	
<b>Tertiary Lithology</b>		<b>Percent</b>	
<b>Comments</b>			

## Water Production Information

<b>Date</b>	08/02/1957	<b>Start Time</b>	
<b>Aquifer</b>	Unknown		
<b>Static Water Level</b>	96.00 ft	<b>Yield</b>	530 gallons per minute
<b>Pumping Water Level</b>	120 ft	<b>Yield Method</b>	Unknown
<b>Measurement</b>	Unknown	<b>Pump Test</b>	Yes
<b>Pump Method</b>	Unknown	<b>Duration</b>	0 mins
<b>Comments</b>			

# Chip Storage Information

<b>Date</b>	08/05/1957		
<b>Storage</b>	EJ10-4	<b>Bin</b>	
<b>Number of Boxes</b>	1	<b>Number of Samples</b>	48
<b>Sample Intervals</b>	5	<b>Sample Gaps</b>	
<b>Sample Top</b>	0 ft	<b>Sample Bottom</b>	240 ft
<b>Washed Top</b>	100 ft	<b>Washed Bottom</b>	240 ft
<b>Duplicate Storage</b>			
<b>Comments</b>			

<https://www.iihr.uiowa.edu/igs/geosam/well/8583/general-information>