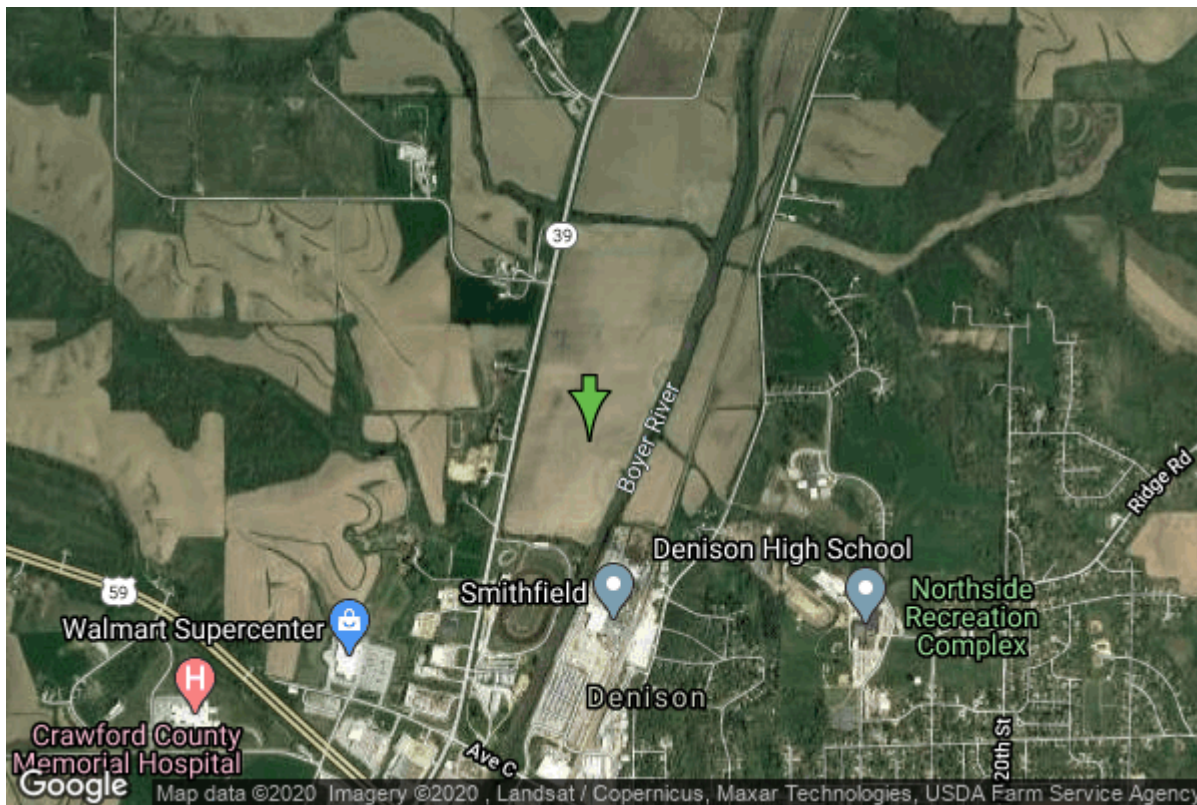


# Well W#85932 Information



<b>Date Received</b>	06/29/2017	<b>State</b>	Iowa
<b>Owner Name</b>	Denison Municipal Utilities	<b>County</b>	Crawford
<b>Alt Name</b>	Well #16; WL 18	<b>Quadrangle</b>	Denison, Iowa
<b>WNumber</b>	85932	<b>Township</b>	T83N
<b>PWTS ID</b>	0	<b>Range</b>	R39W
<b>PWS ID</b>	2424027	<b>Section</b>	2
<b>Storet ID</b>	0	<b>Quarter</b>	NW SW NW
<b>SDWIS ID</b>	0	<b>Latitude</b>	42.0331140000
<b>USGS ID</b>	0	<b>Longitude</b>	-95.3605720000
<b>Project</b>		<b>Accuracy</b>	
<b>Operator</b>		<b>UTM X</b>	304599
		<b>UTM Y</b>	4656149

---

<b>Site Type</b>	Drilled hole	<b>Drilling Company</b>	Layne Christensen Company
<b>Well Status</b>	Active	<b>Drilling Date</b>	04/27/2017
<b>Field Located</b>	No	<b>Drilling Method</b>	Other
<b>Elevation</b>	1166 ft	<b>Bedrock Depth</b>	0 ft
<b>Elevation Accuracy</b>	Topo Map Accurate to 2 ft	<b>Well Depth</b>	59 ft
<b>Landscape Position</b>	Unknown	<b>Total Depth</b>	59 ft
		<b>Well Types</b>	Public Supply
		<b>Aquifers</b>	

## Hole Construction Information

Date	04/27/2017		
Diameter	48.00 in	Depth	59.00 ft
Comments			

## Casing Construction Information

Date	04/27/2017	Casing Type	Steel
Start Depth	-8.30 ft	End Depth	39.00 ft
Diameter	24.00 in	Amount	47.30 ft
Comments			

## Screen Construction Information

Date	04/27/2017		
Screen Type	Steel	Slot Size	0.07
Start Depth	39.00 ft	End Depth	59.00 ft
Diameter	24.00 in	Amount	20 ft
Comments			

## Grout Construction Information

Date	04/27/2017		
Grout Type	Neat Cement	Grout Placement	Tremie
Start Depth	0.00 ft	End Depth	16.00 ft
Comments			

---

Date	04/27/2017		
Grout Type	Bentonite (Clay)	Grout Placement	Unknown
Start Depth	16.00 ft	End Depth	35.00 ft
Comments			

## Gravel Pack Construction Information

Date	04/27/2017		
Gravel Pack Type	Red Flint	Slot Size	
Start Depth	35.00 ft	End Depth	59.00 ft
Comments			

## Pump Construction Information

Date	04/27/2017	Pump Type	Turbine
Diameter	11.00 in	Rating	500

Depth Intake 48.00 ft  
Comments

## Log Information

Date 04/27/2017  
Log Types Drillers log  
Prepared By Layne Christensen Company  
Comments

---

Date 09/22/2016  
Log Types Pump Test  
Prepared By Layne Christensen Company  
Comments

## Formation Information

Formation Color	Brown	Formation Lithology	soil or fill
Start Depth	0.00 ft	End Depth	9.00 ft
Comments			

---

Formation Color	Brown	Formation Lithology	clay
Start Depth	9.00 ft	End Depth	17.00 ft
Comments			

---

Formation Color	Brown	Formation Lithology	clay and sand
Start Depth	17.00 ft	End Depth	19.00 ft
Comments	w/ silt		

---

Formation Color	Brown/Grayish	Formation Lithology	clay and sand
Start Depth	19.00 ft	End Depth	25.00 ft
Comments			

---

Formation Color	Gray	Formation Lithology	clay and sand
Start Depth	25.00 ft	End Depth	36.00 ft
Comments			

---

Formation Color	No Color Noted	Formation Lithology	sand and gravel
Start Depth	36.00 ft	End Depth	53.00 ft
Comments			

---

Formation Color	No Color Noted	Formation Lithology	sand and gravel
Start Depth	53.00 ft	End Depth	59.00 ft
Comments			

# Water Production Information

<b>Date</b>	09/22/2016	<b>Start Time</b>	
<b>Aquifer</b>	Unknown		
<b>Static Water Level</b>	20.00 ft	<b>Yield</b>	600 gallons per minute
<b>Pumping Water Level</b>	33 ft	<b>Yield Method</b>	Orifice
<b>Measurement</b>	Sonic	<b>Pump Test</b>	Yes
<b>Pump Method</b>	Bailed	<b>Duration</b>	1440 mins
<b>Comments</b>			

<https://www.iihr.uiowa.edu/igs/geosam/well/85932/general-information>